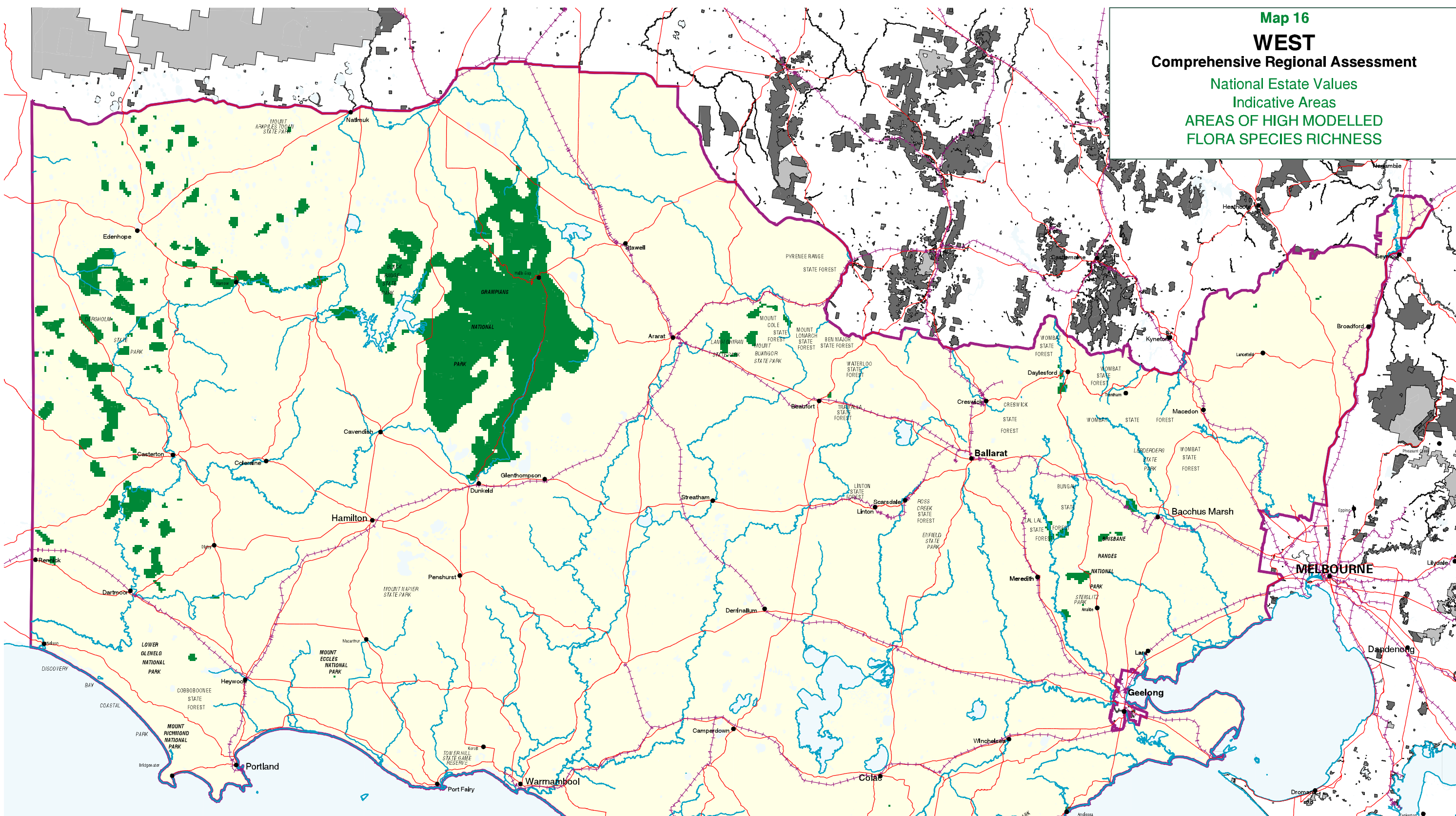


Map 16
WEST
Comprehensive Regional Assessment
 National Estate Values
 Indicative Areas
**AREAS OF HIGH MODELLED
 FLORA SPECIES RICHNESS**



Legend

- RFA boundary
- Roads
- Rivers
- Railways
- Parks outside study area
- Other public land outside study area
- Water Bodies
- Areas of High Modelled Flora Species Richness

0 10 20 30 40
 Kilometres

Projection: Universal Transverse Mercator, AMG Zone 54

Locality Map

NSW

VICTORIA

West Study Area

Melbourne

The locality map shows the West Study Area in green, located in the western part of Victoria, Australia. It is situated between the border with New South Wales (NSW) to the north and west, and Melbourne to the east. The map also shows the state boundaries of Victoria and NSW.

Australia
 State Government of Victoria