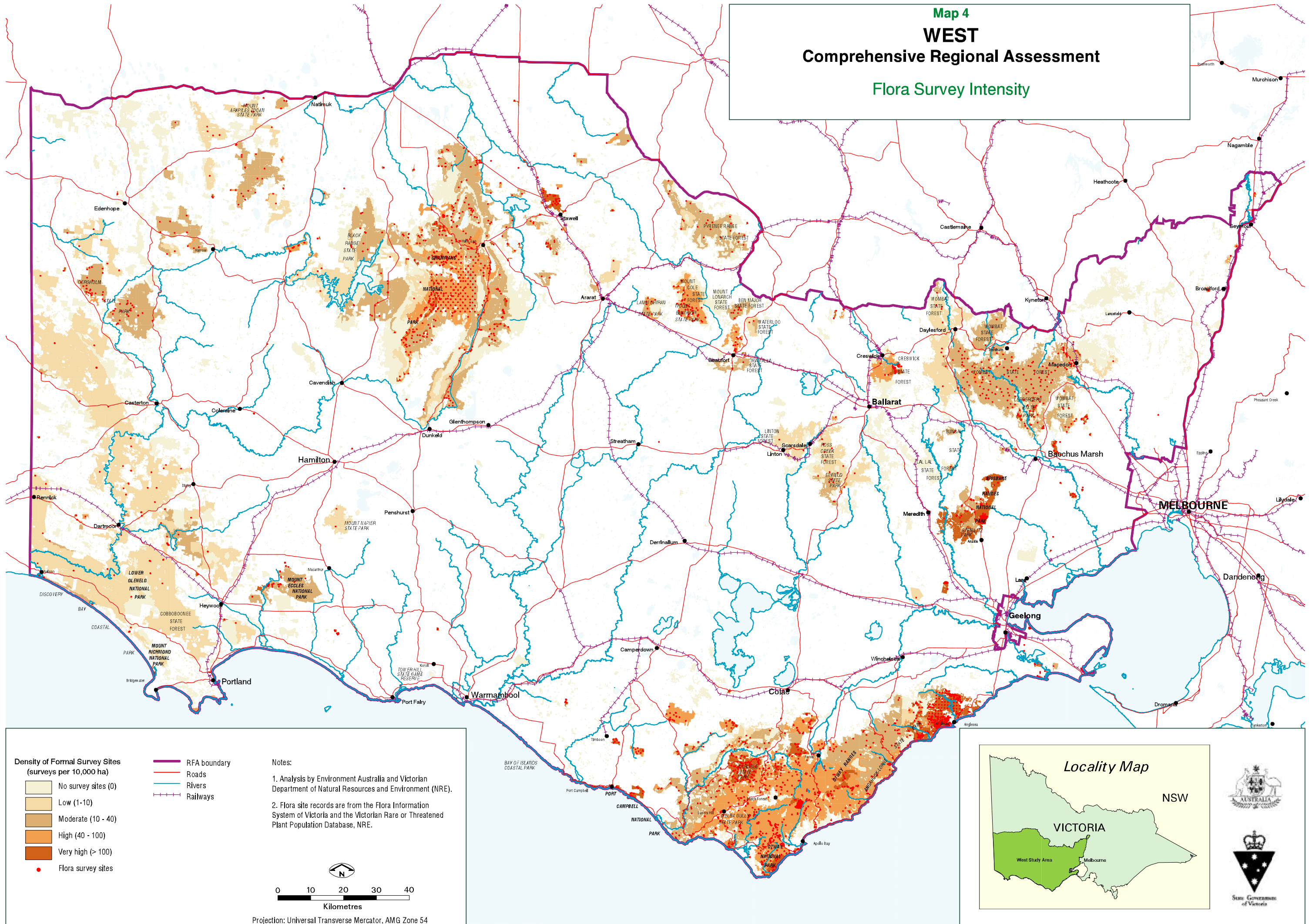


Map 4
WEST
Comprehensive Regional Assessment
Flora Survey Intensity



Density of Formal Survey Sites
(surveys per 10,000 ha)

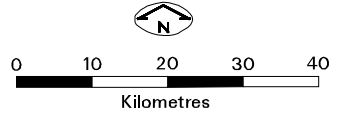
Light yellow	No survey sites (0)
Light orange	Low (1-10)
Orange	Moderate (10 - 40)
Dark orange	High (40 - 100)
Dark brown	Very high (> 100)

● Flora survey sites

— RFA boundary
— Roads
— Rivers
— Railways

Notes:

1. Analysis by Environment Australia and Victorian Department of Natural Resources and Environment (NRE).
2. Flora site records are from the Flora Information System of Victoria and the Victorian Rare or Threatened Plant Population Database, NRE.



Projection: Universal Transverse Mercator, AMG Zone 54

