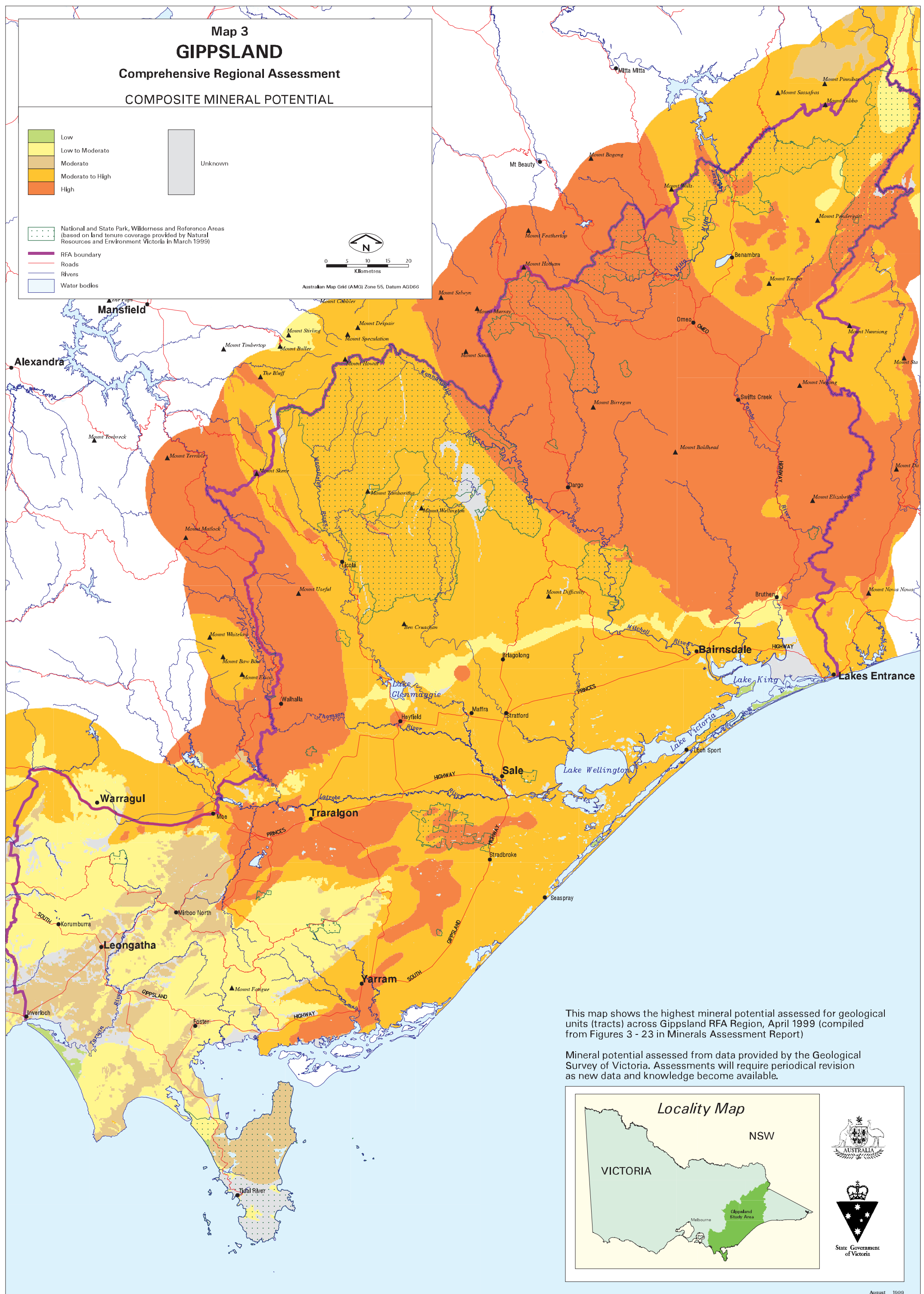


Map 3
GIPPSLAND
Comprehensive Regional Assessment
COMPOSITE MINERAL POTENTIAL

Low
 Low to Moderate
 Moderate
 Moderate to High
 High
 Unknown

National and State Park, Wilderness and Reference Areas (based on land tenure coverage provided by Natural Resources and Environment Victoria in March 1999)
 RFA boundary
 Roads
 Rivers
 Water bodies

Australian Map Grid (AMG) Zone 55, Datum AGD66



This map shows the highest mineral potential assessed for geological units (tracts) across Gippsland RFA Region, April 1999 (compiled from Figures 3 - 23 in Minerals Assessment Report)

Mineral potential assessed from data provided by the Geological Survey of Victoria. Assessments will require periodical revision as new data and knowledge become available.

Locality Map

NSW
 VICTORIA
 Melbourne
 Gippsland Study Area

AUSTRALIA

 State Government of Victoria