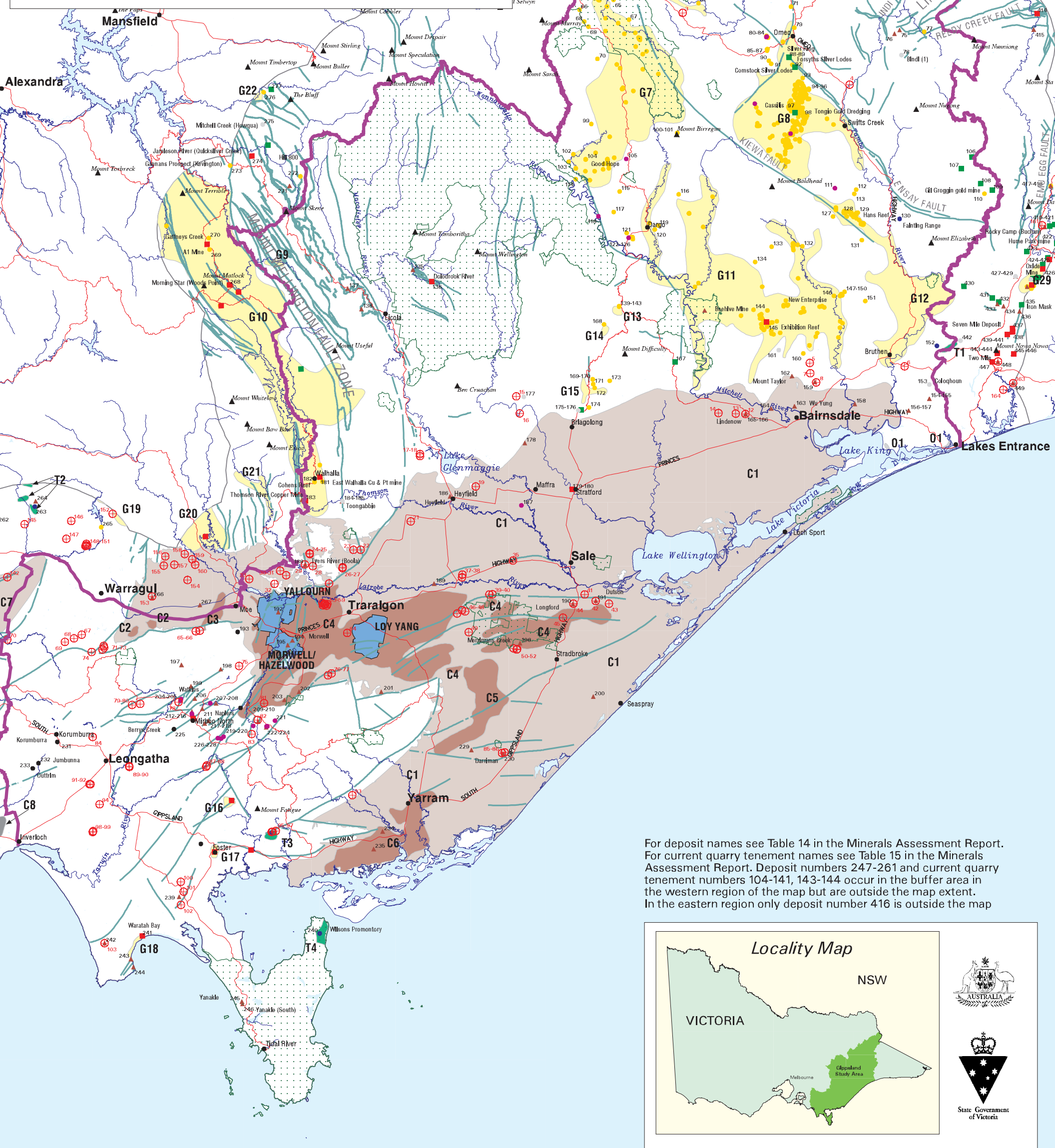


# Map 2 GIPPSLAND

## Comprehensive Regional Assessment

### MINERAL OCCURRENCES, GOLDFIELDS AND COALFIELDS

RFA boundary	C4 Brown Coalfield	National and State Park, Wilderness and Reference Areas (based on land tenure coverage provided by Natural Resources and Environment Victoria in March 1999)
Roads	C1 Brown Coalfield - sub economic	Water bodies
Rivers	C8 Black Coalfield	
Faults	G7 Gold	
Brown Coal open cut mining lease	G8 Gold	
Black Coal	O1 Oil	
Gold (+/- silver, antimony, base metals)	T2 Tin	
Copper, Lead, Zinc and Silver		
Tin, Tungsten and Molybdenum		
Industrial Minerals		
Dimension Stone		
Other		
Unspecified		
Current quarry tenements		



For deposit names see Table 14 in the Minerals Assessment Report.  
 For current quarry tenement names see Table 15 in the Minerals Assessment Report. Deposit numbers 247-261 and current quarry tenement numbers 104-141, 143-144 occur in the buffer area in the western region of the map but are outside the map extent. In the eastern region only deposit number 416 is outside the map

**Locality Map**

NSW

VICTORIA

Melbourne

Cleveland Study Area

State Government of Victoria