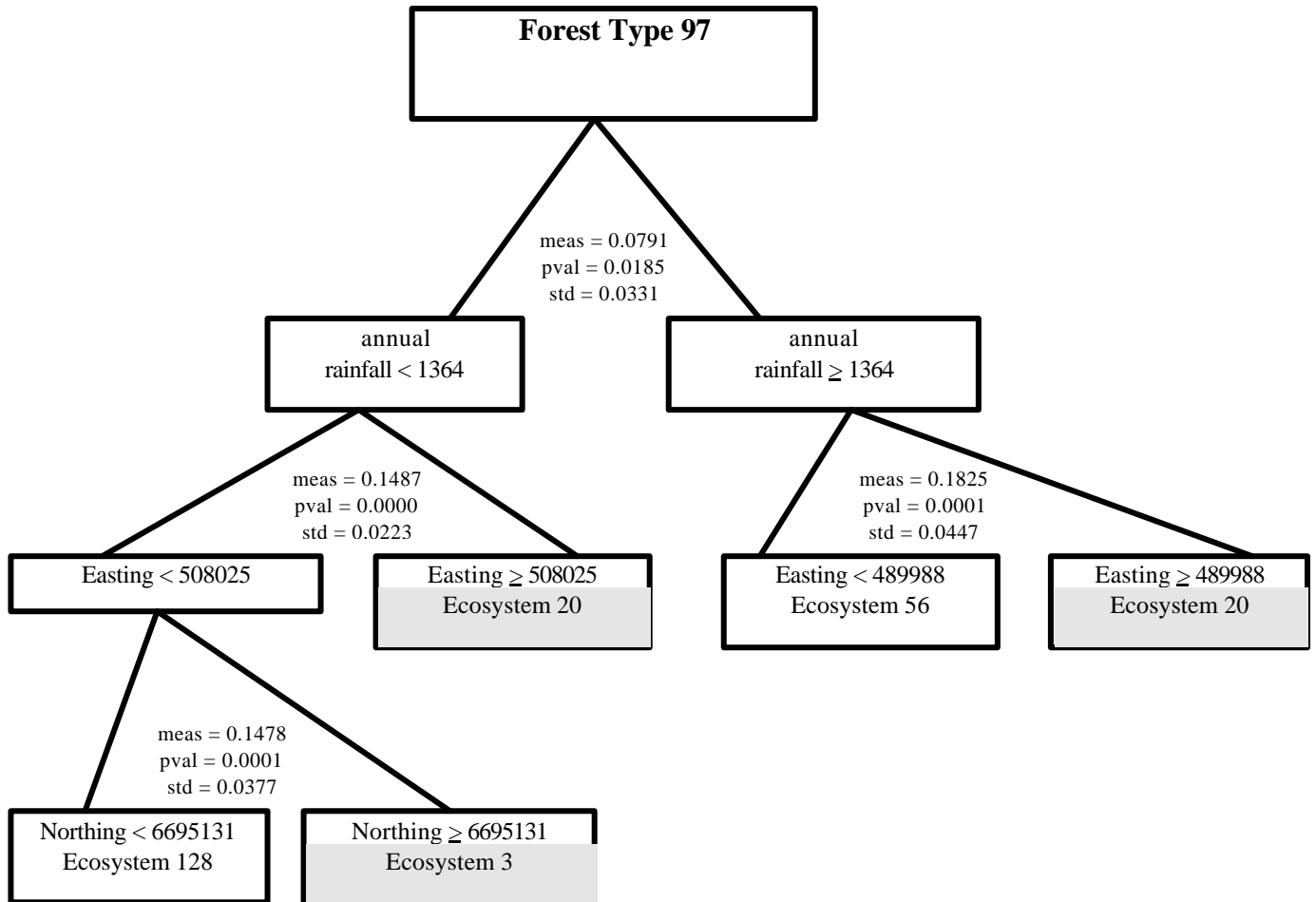
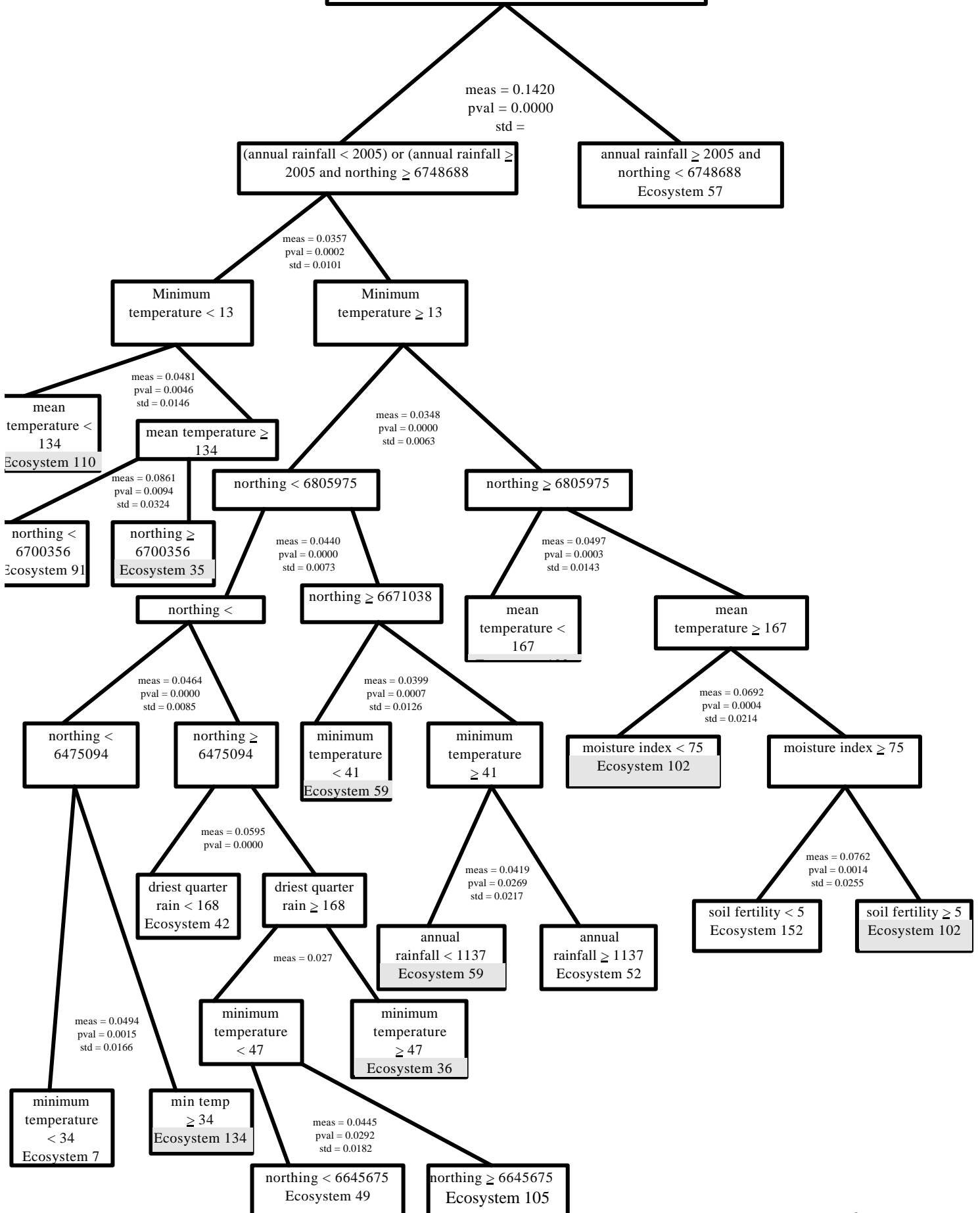


APPENDIX 4

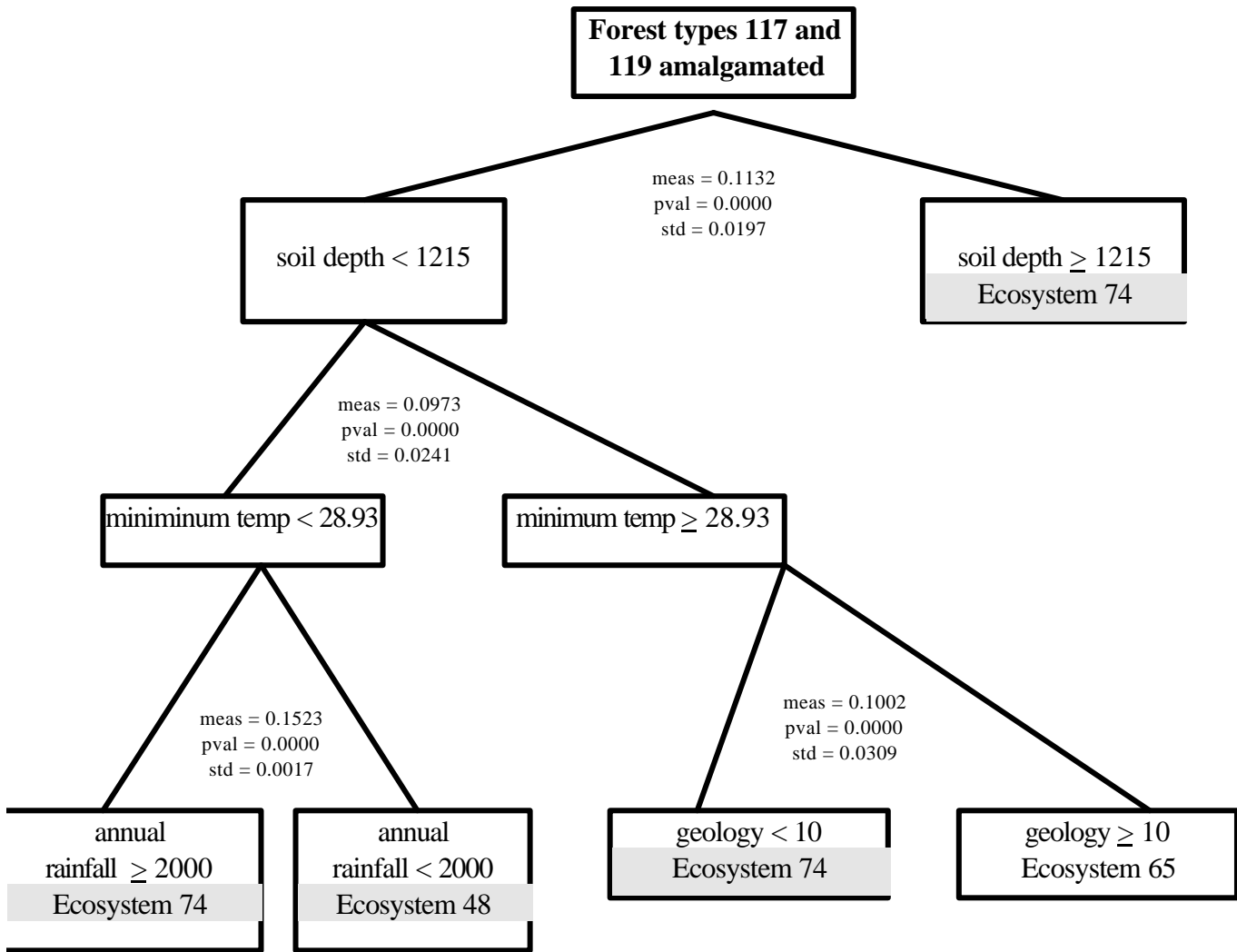


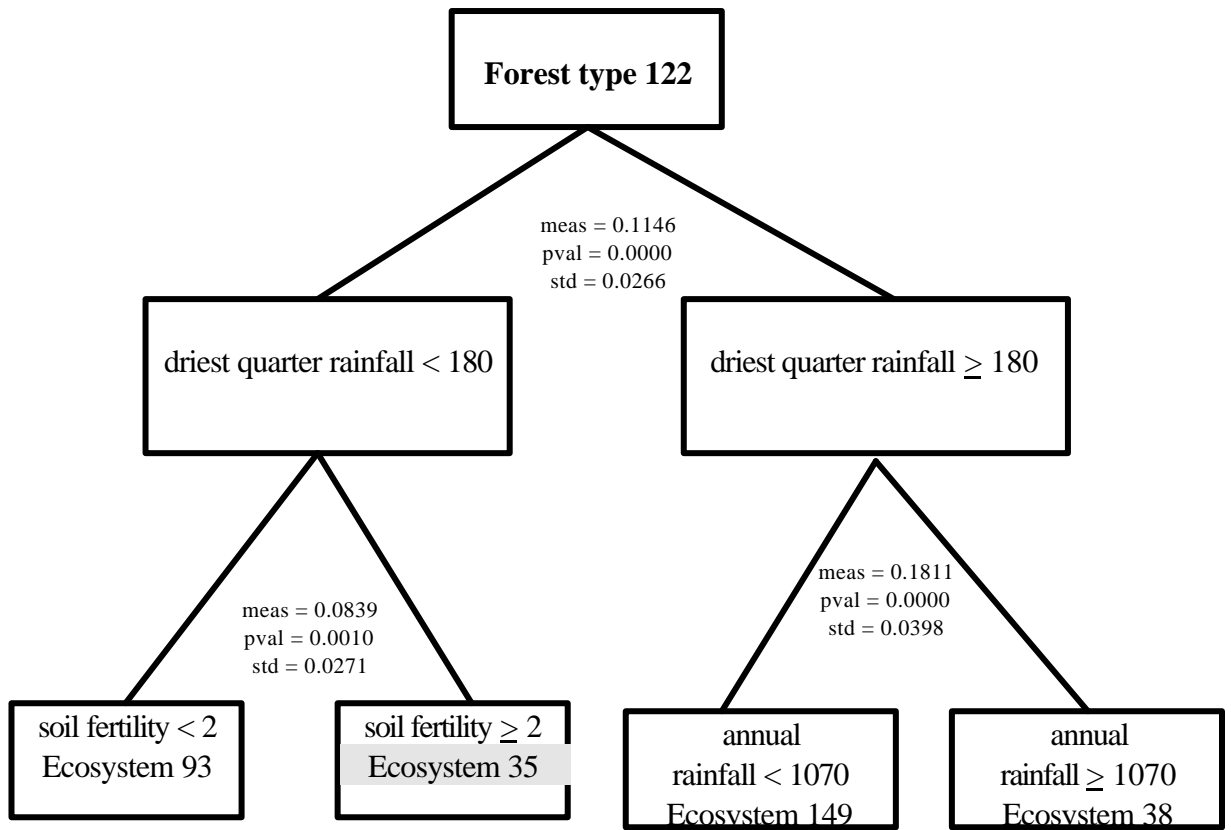
APPENDIX 4

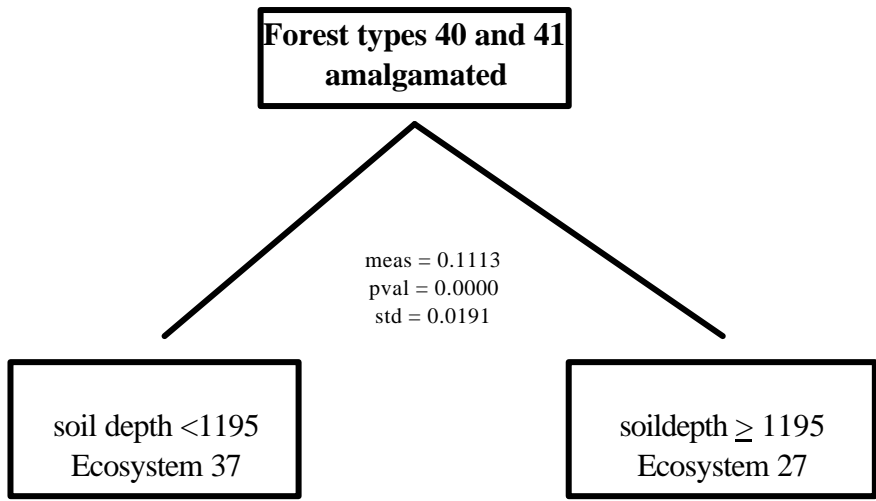
Forest types 60, 61, 62 and mixed type 62/74 amalgamated



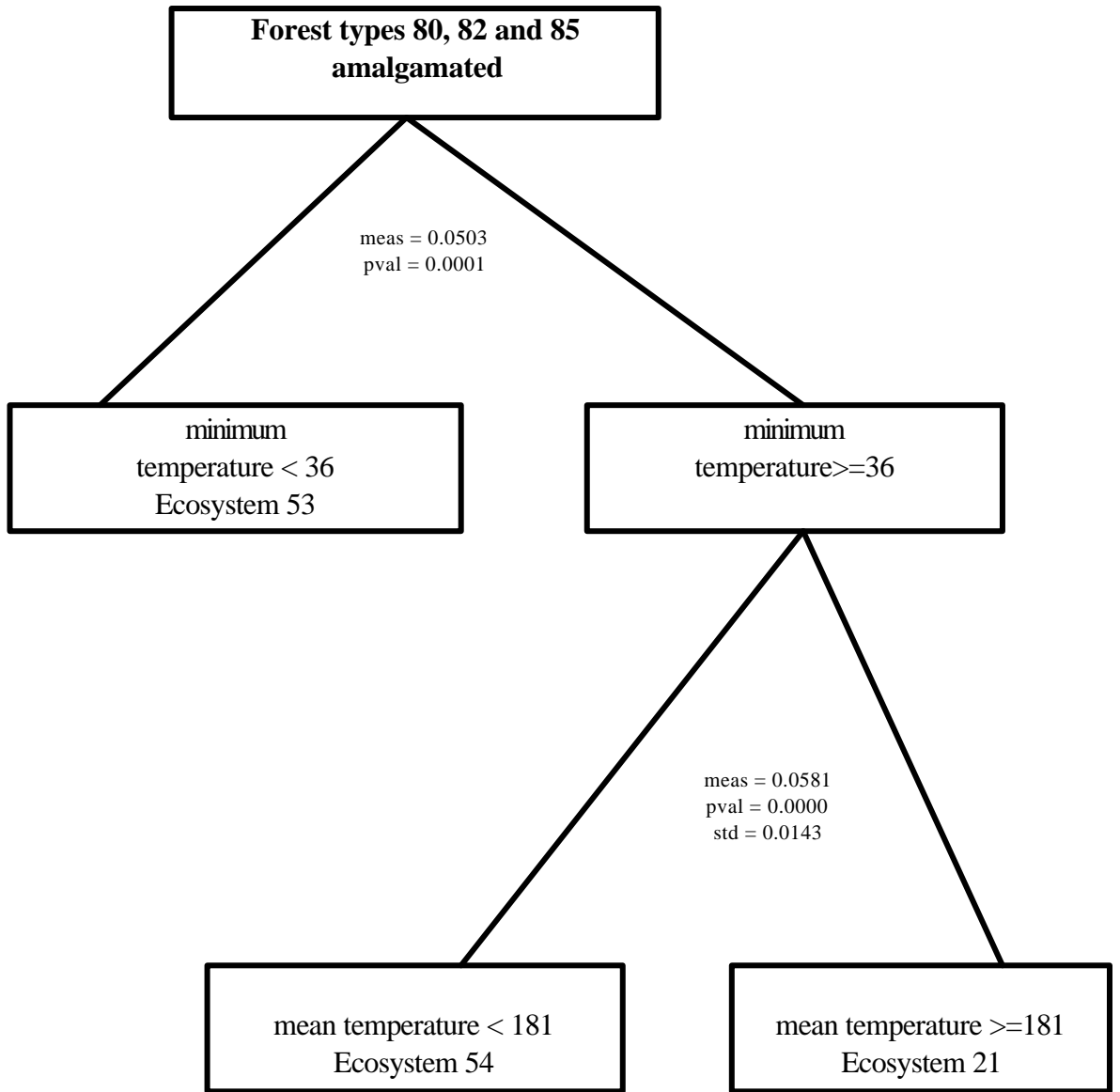
APPENDIX 4

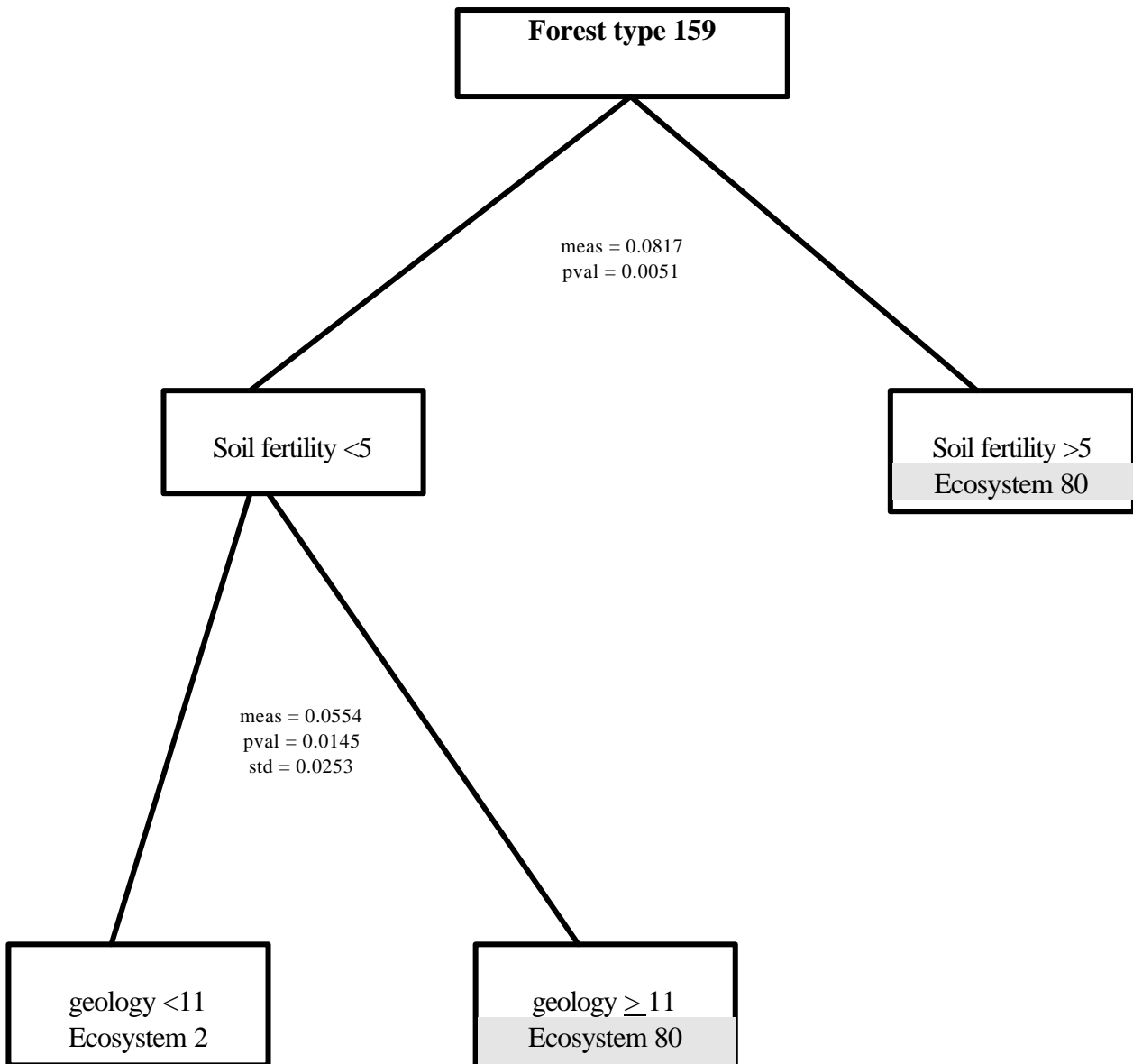


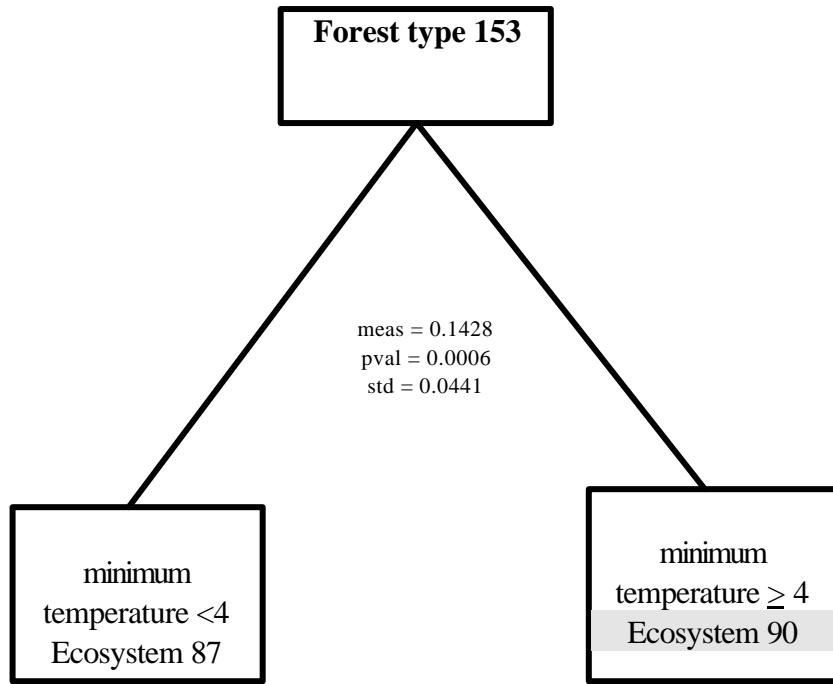


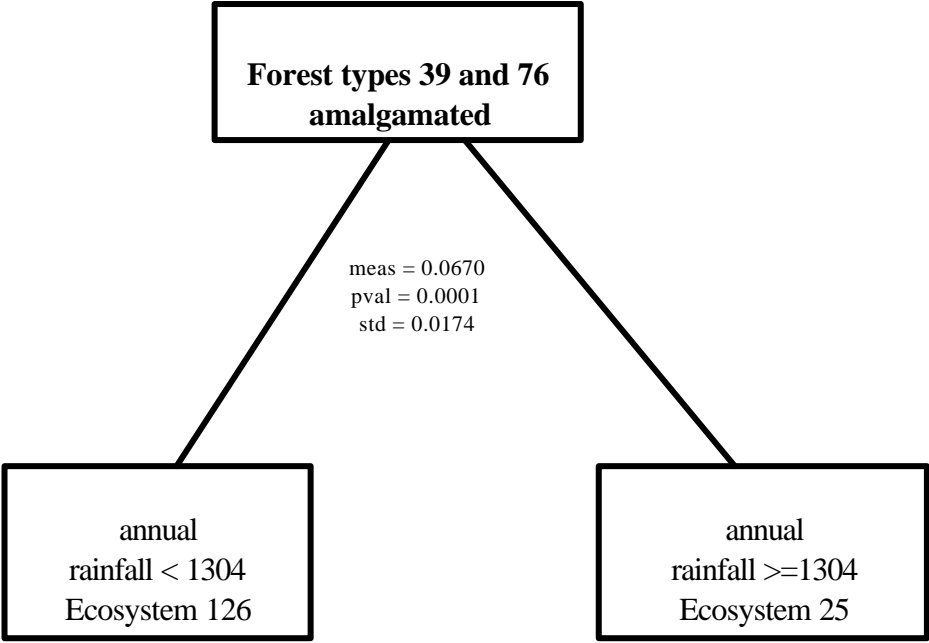


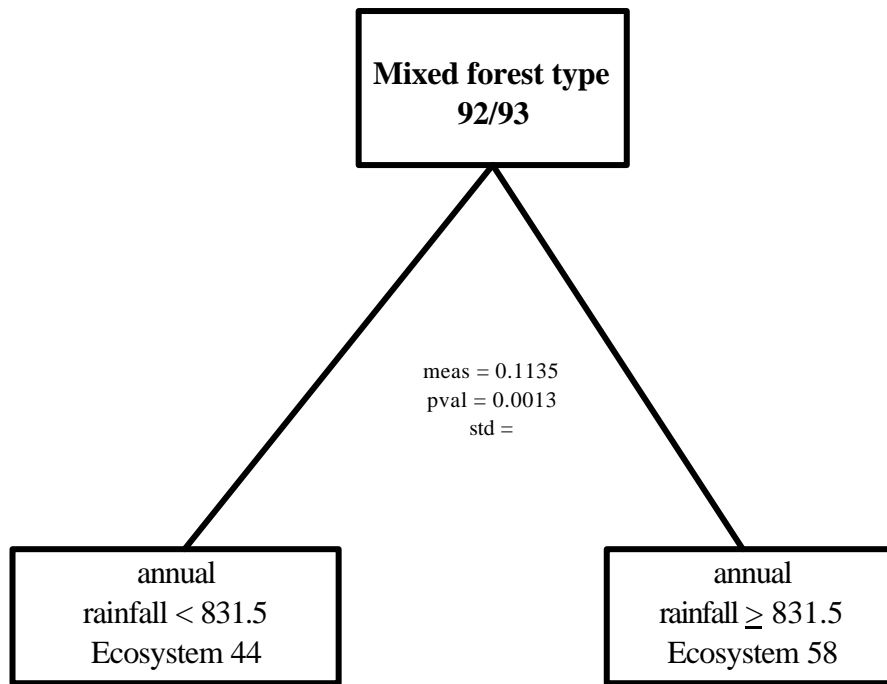
.

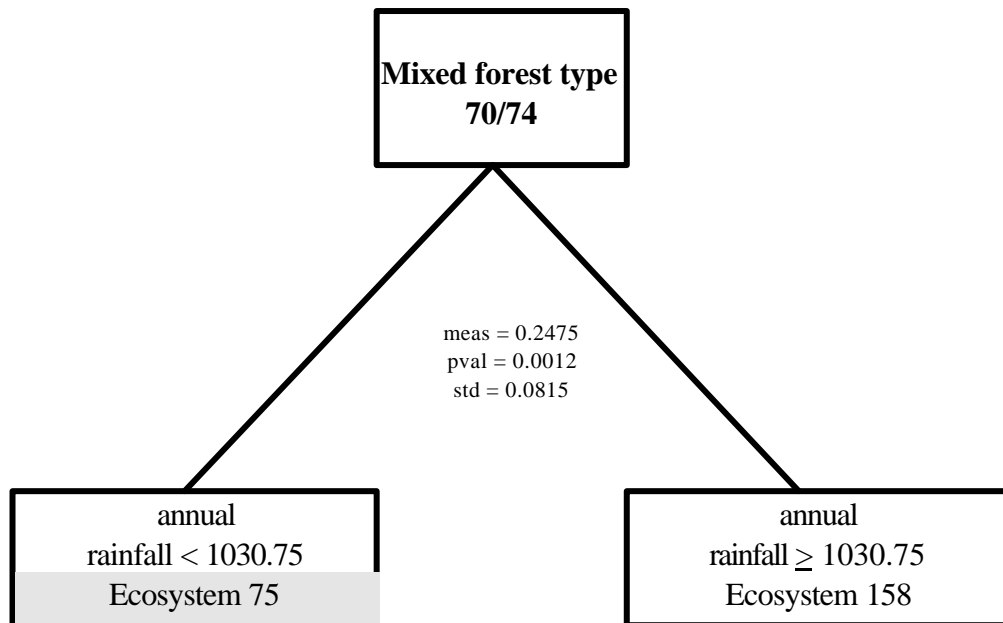


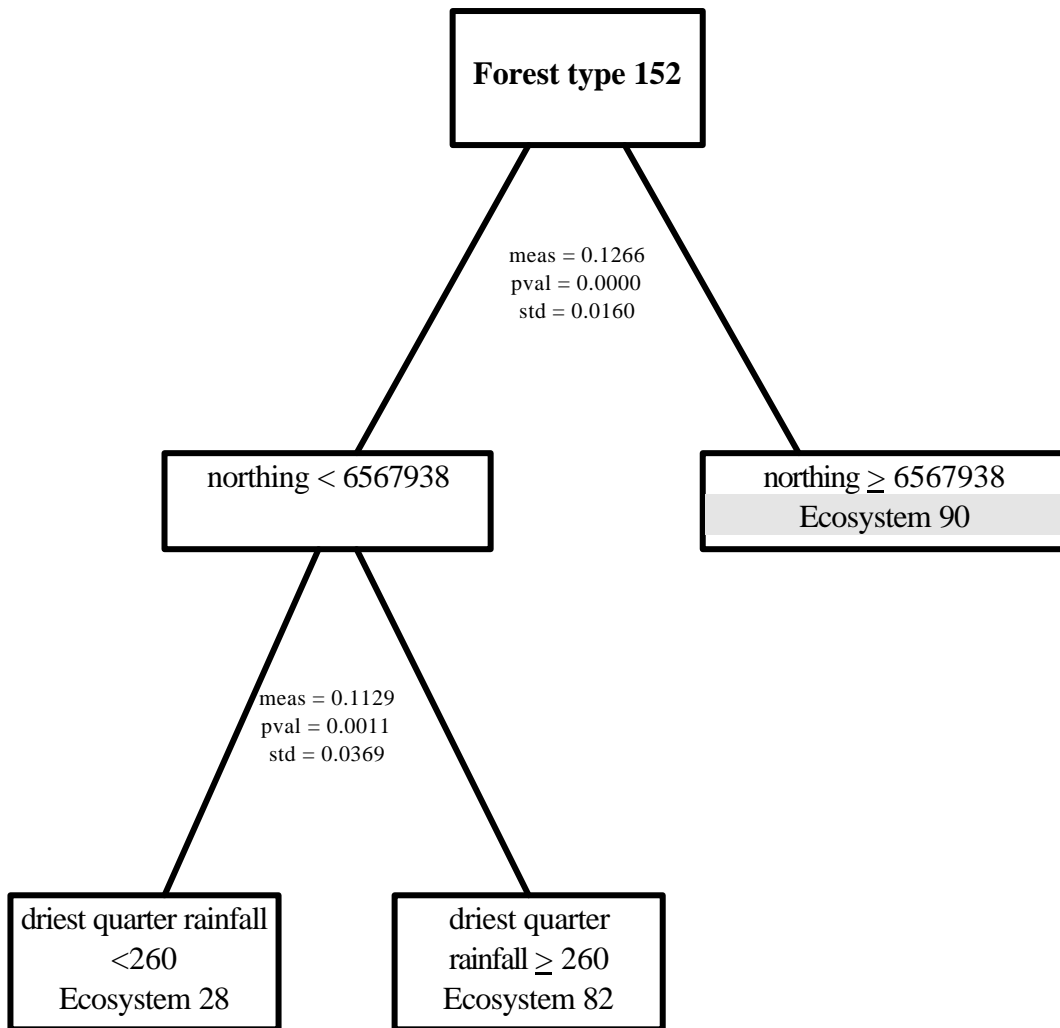


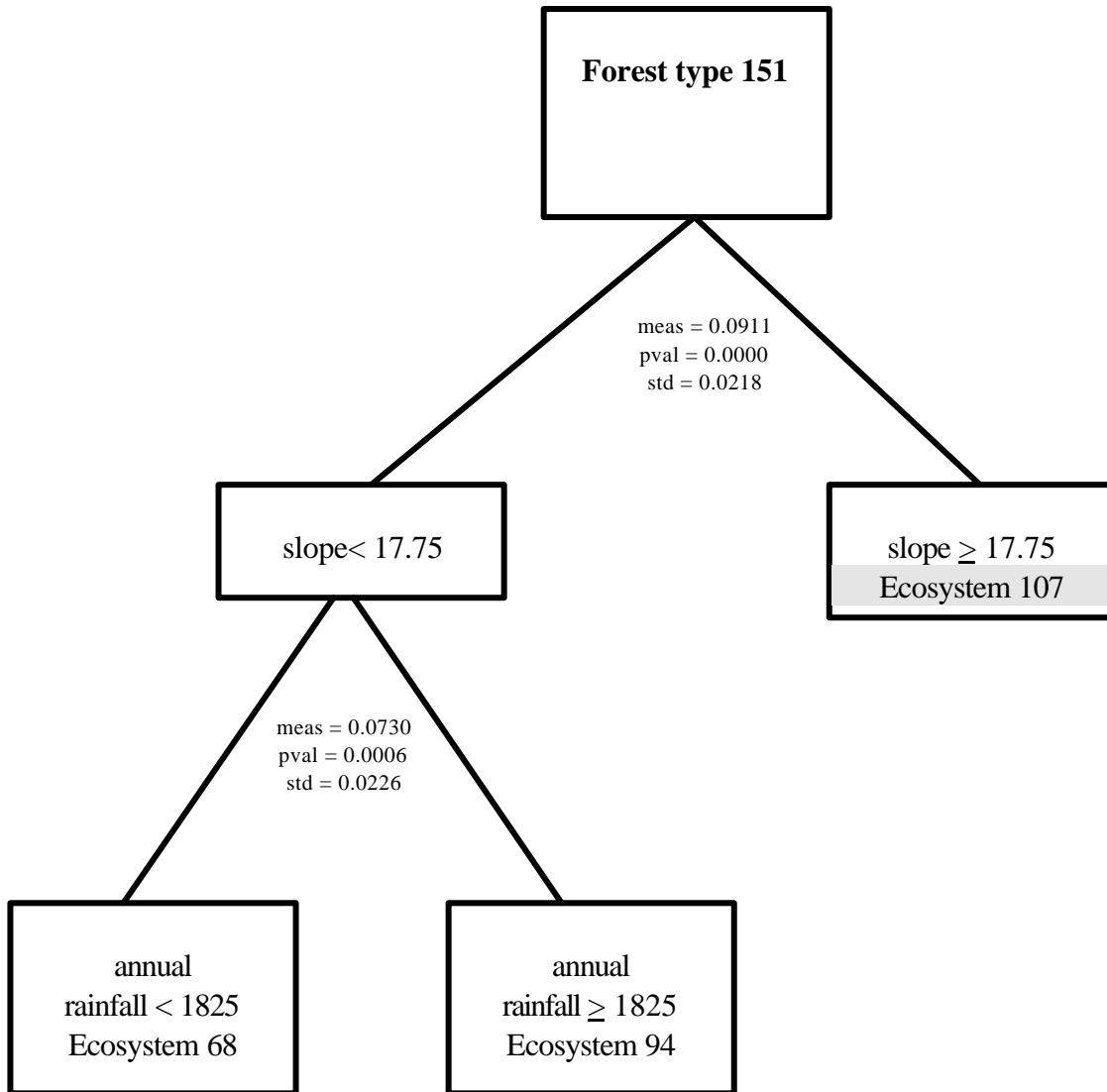


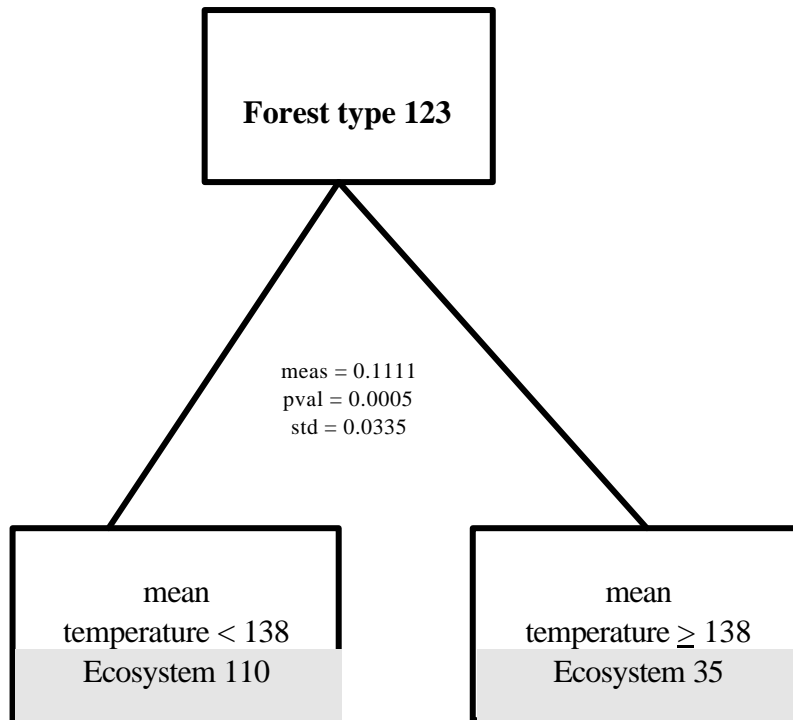




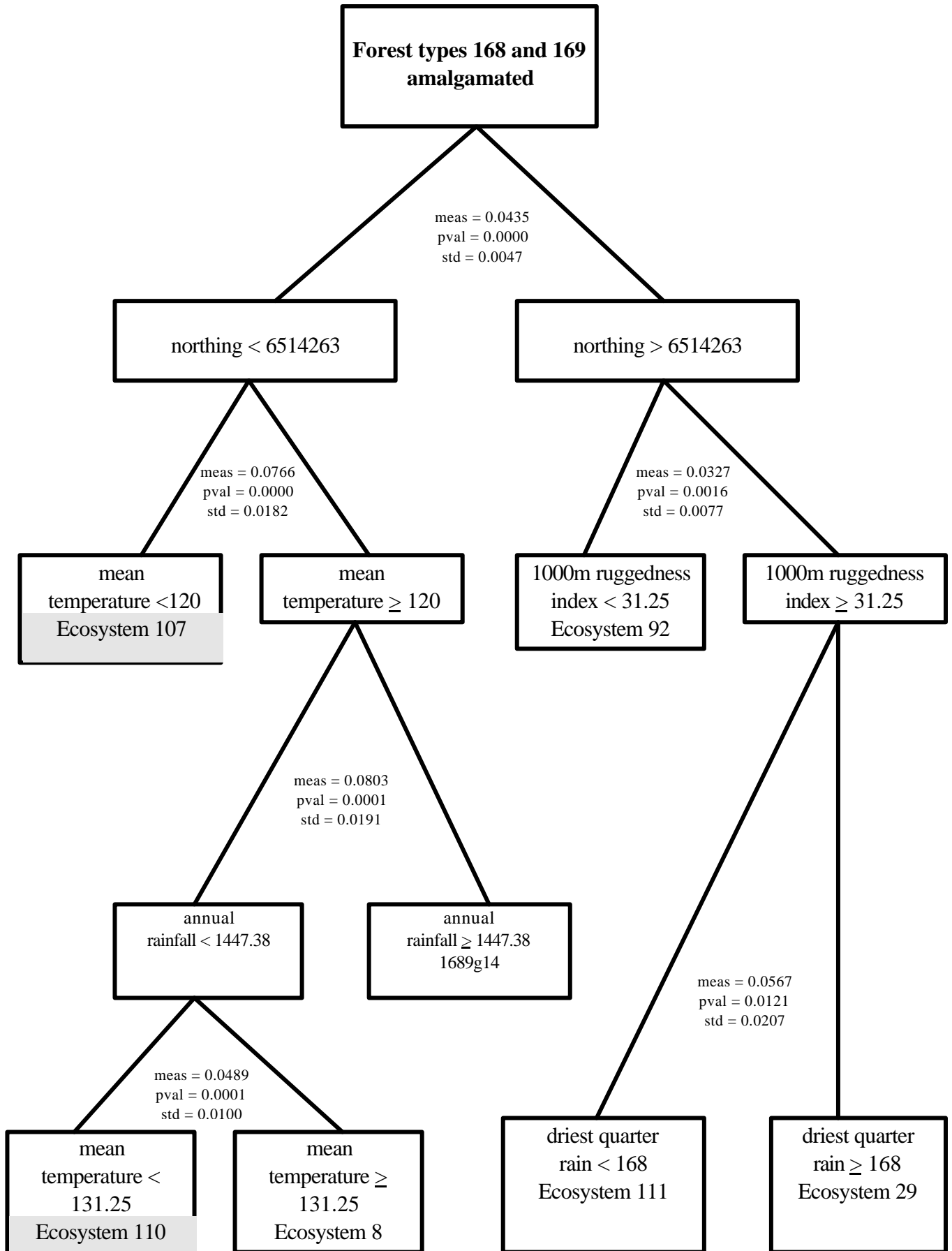


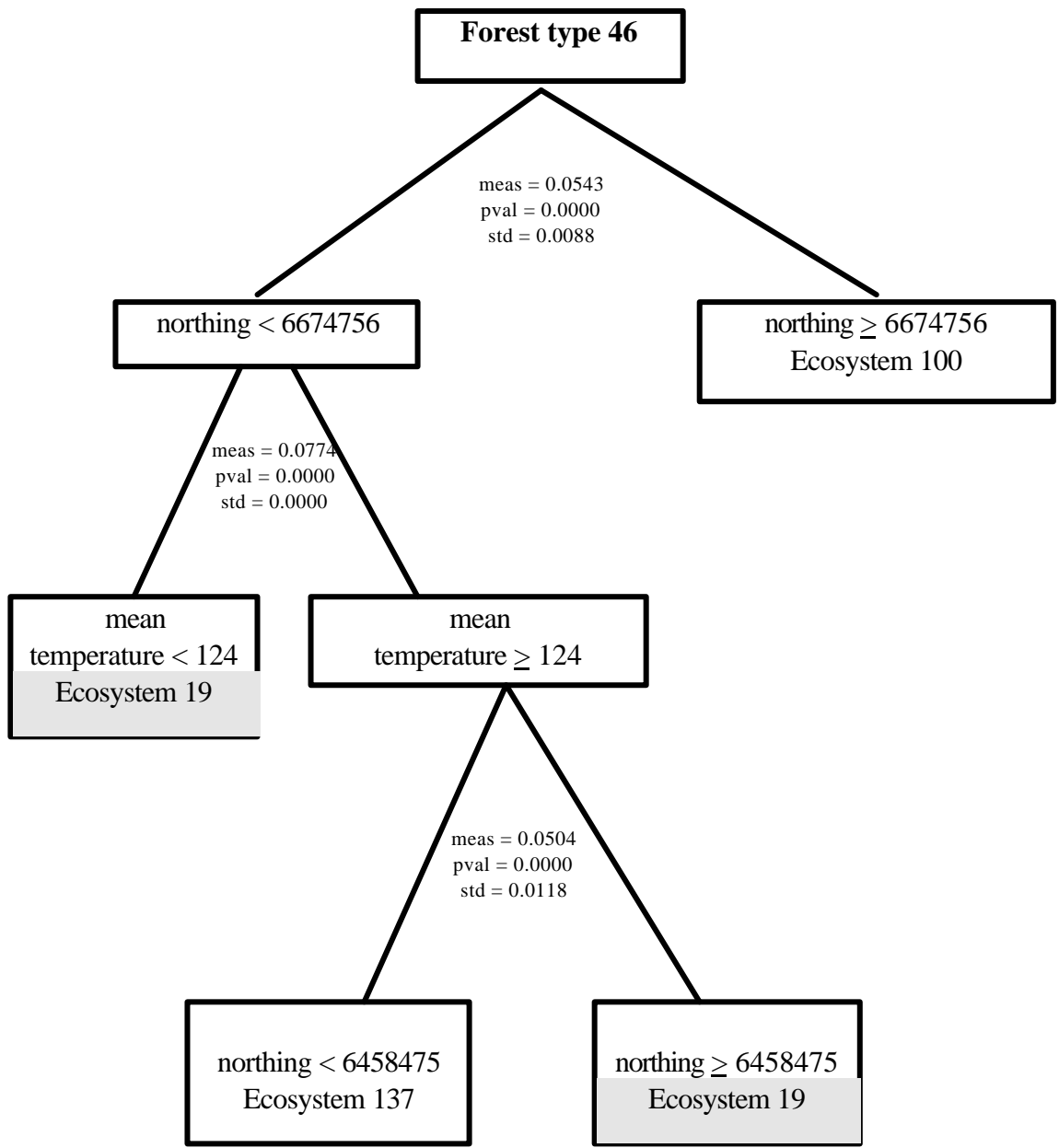


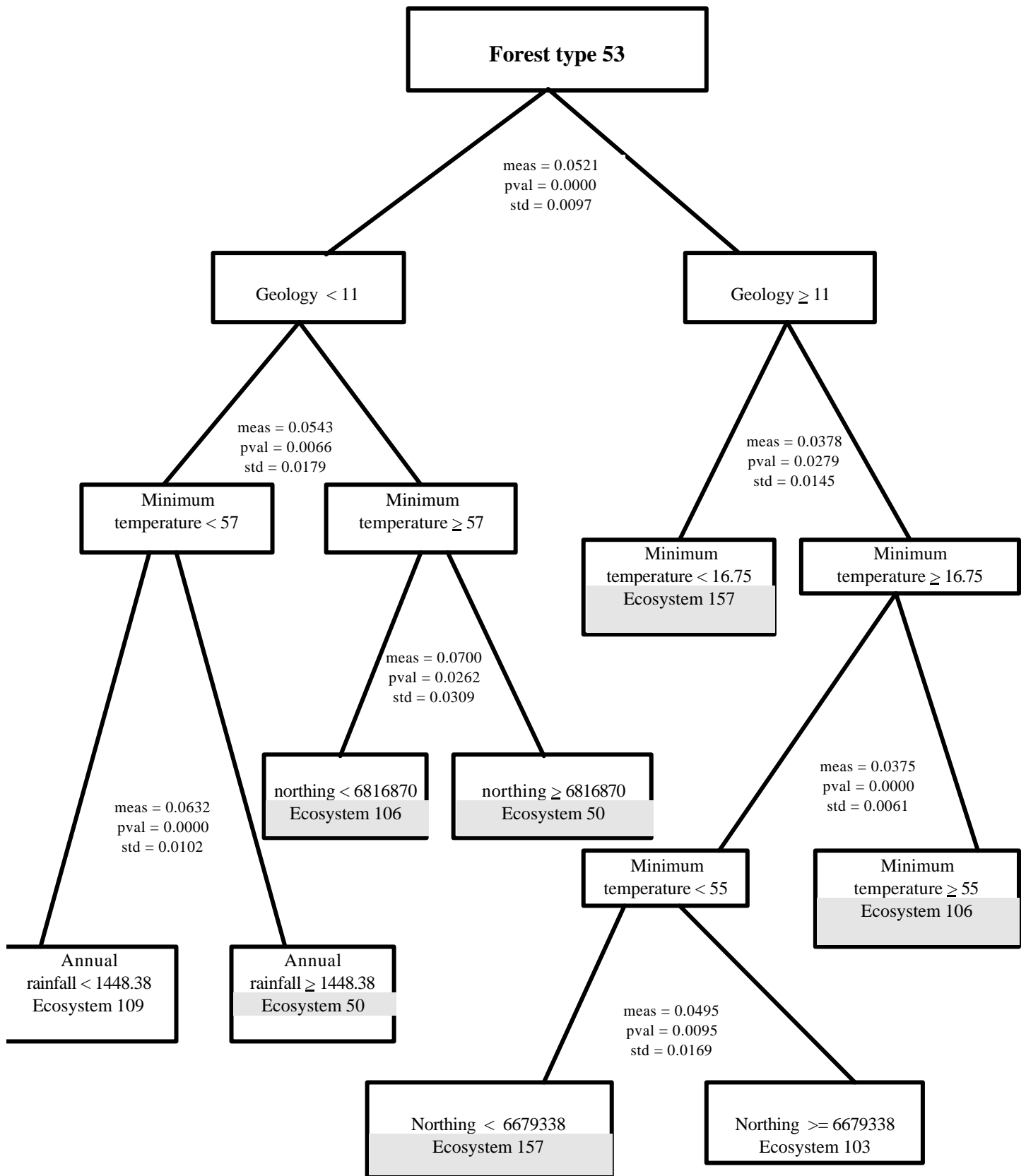


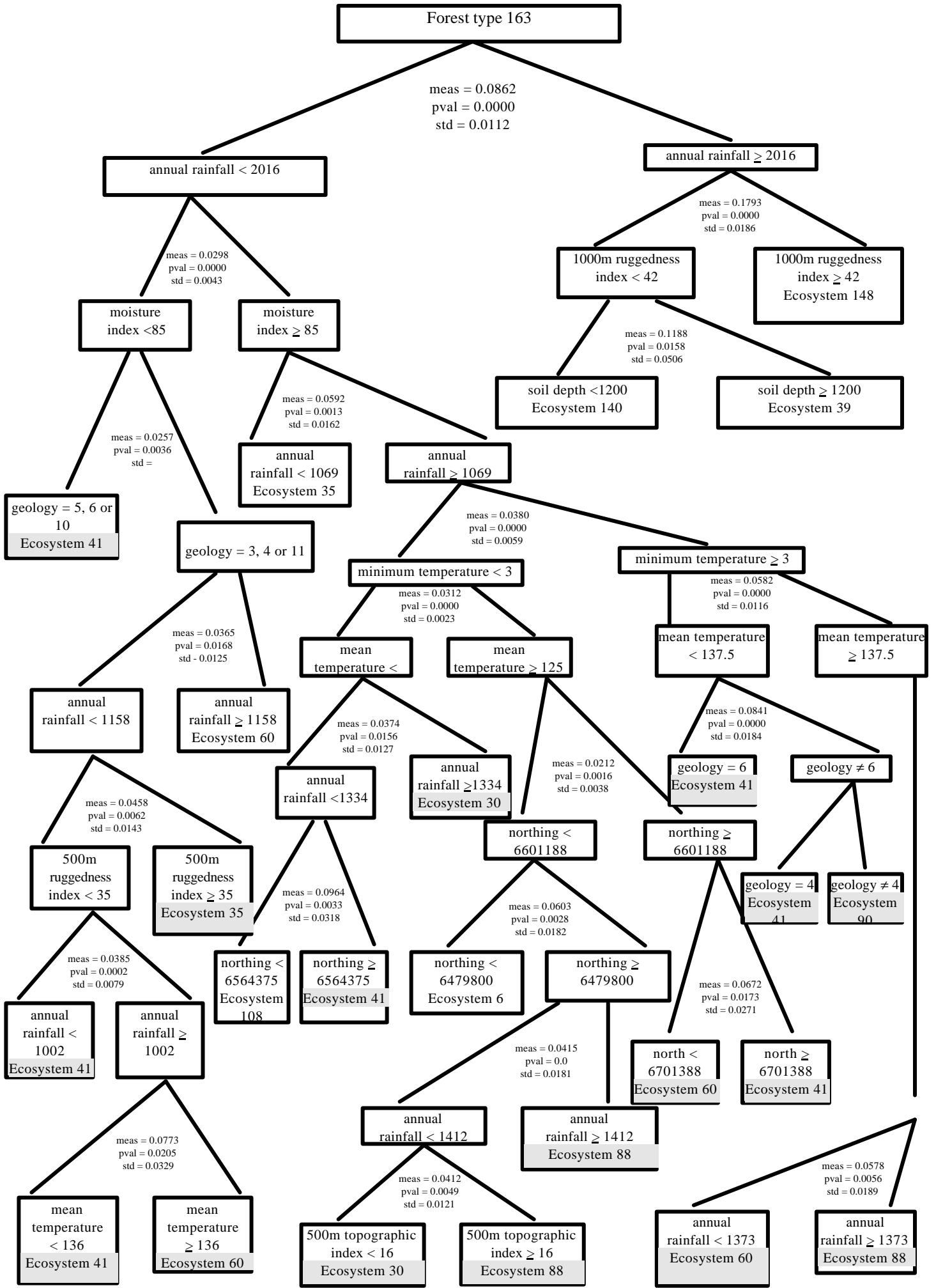


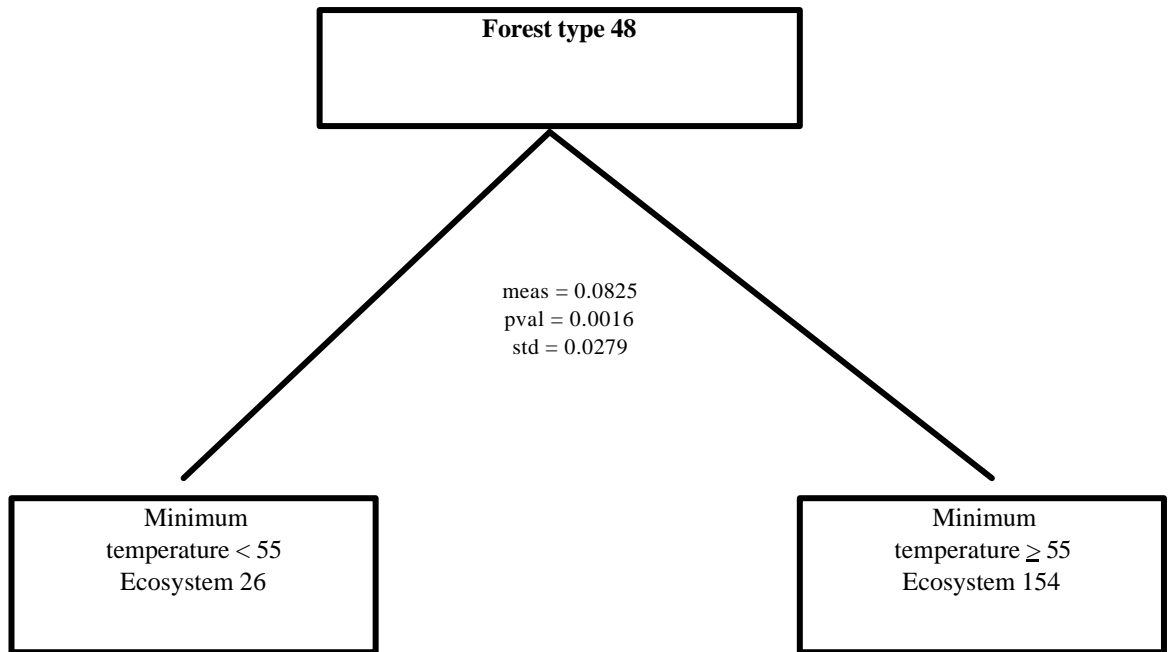


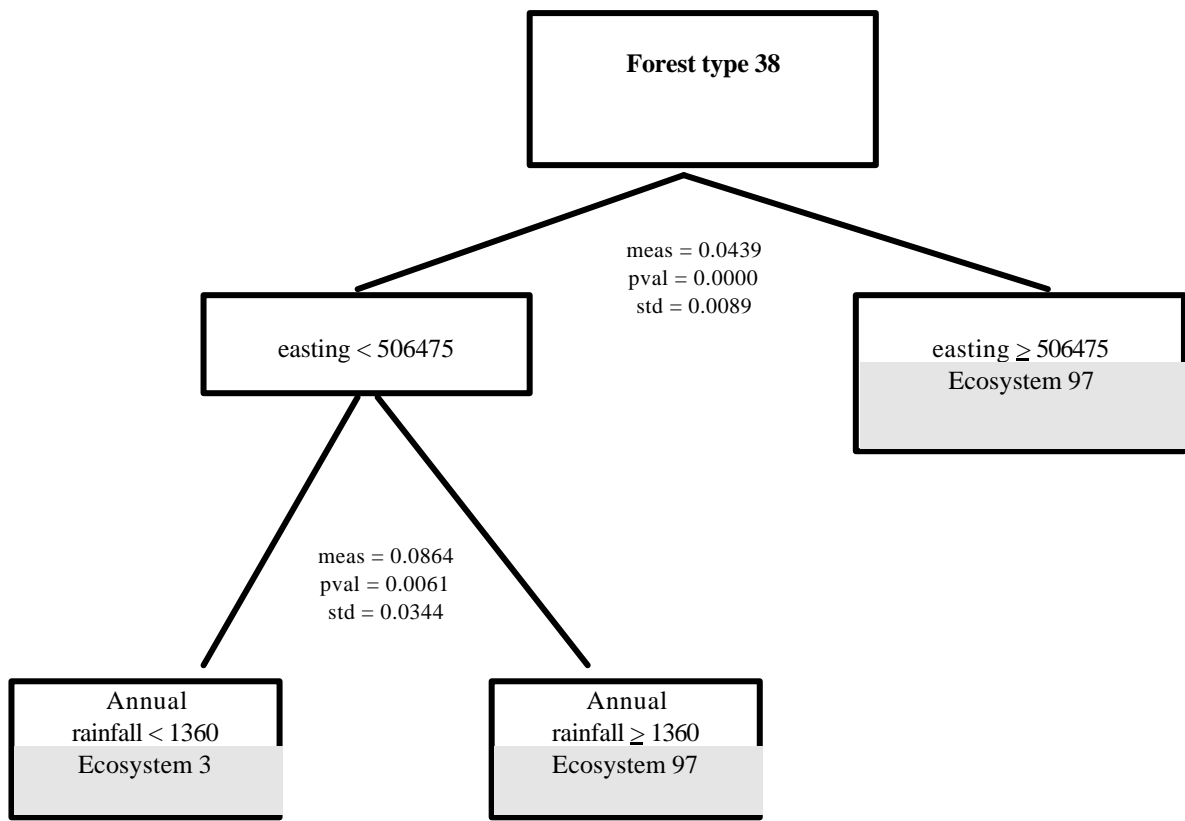


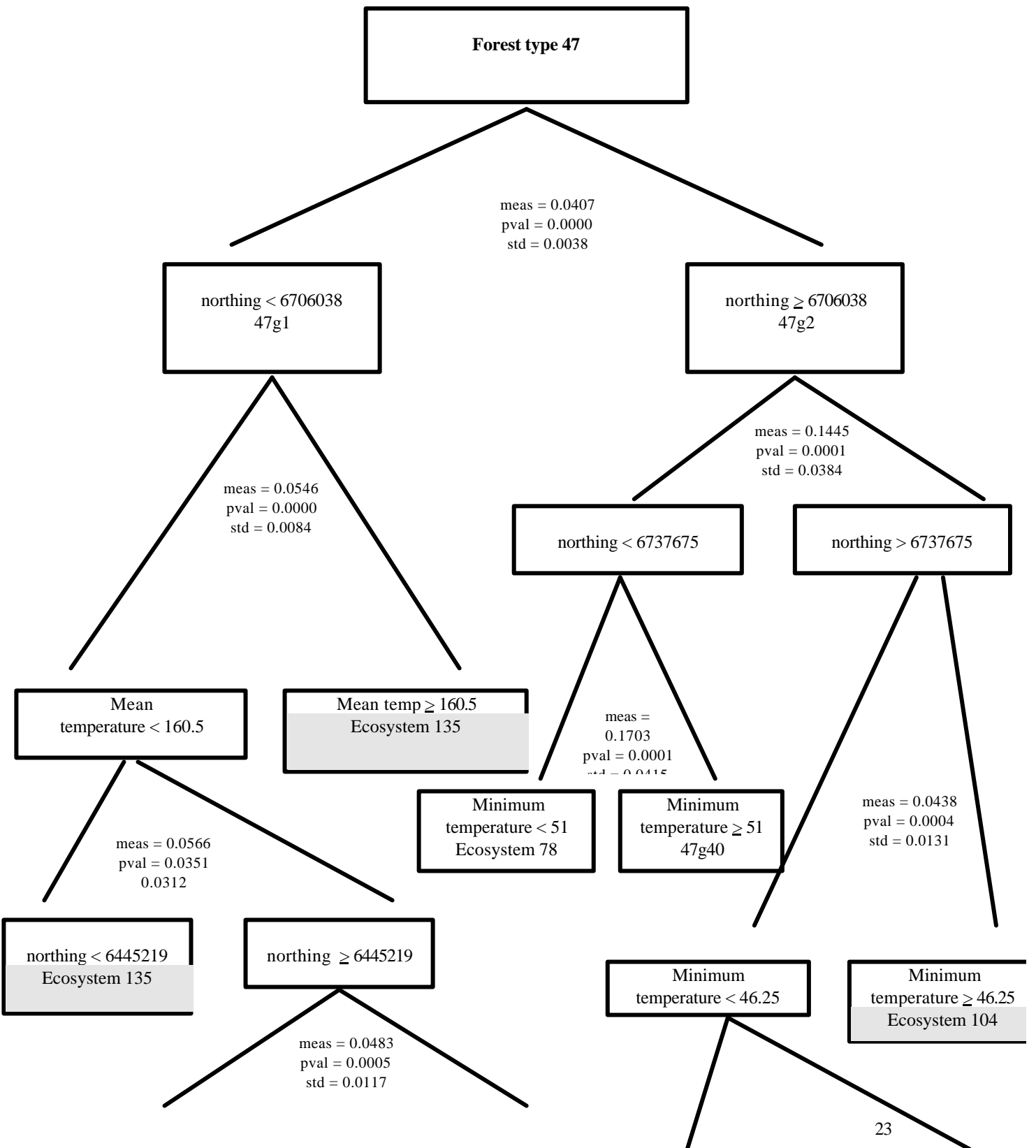


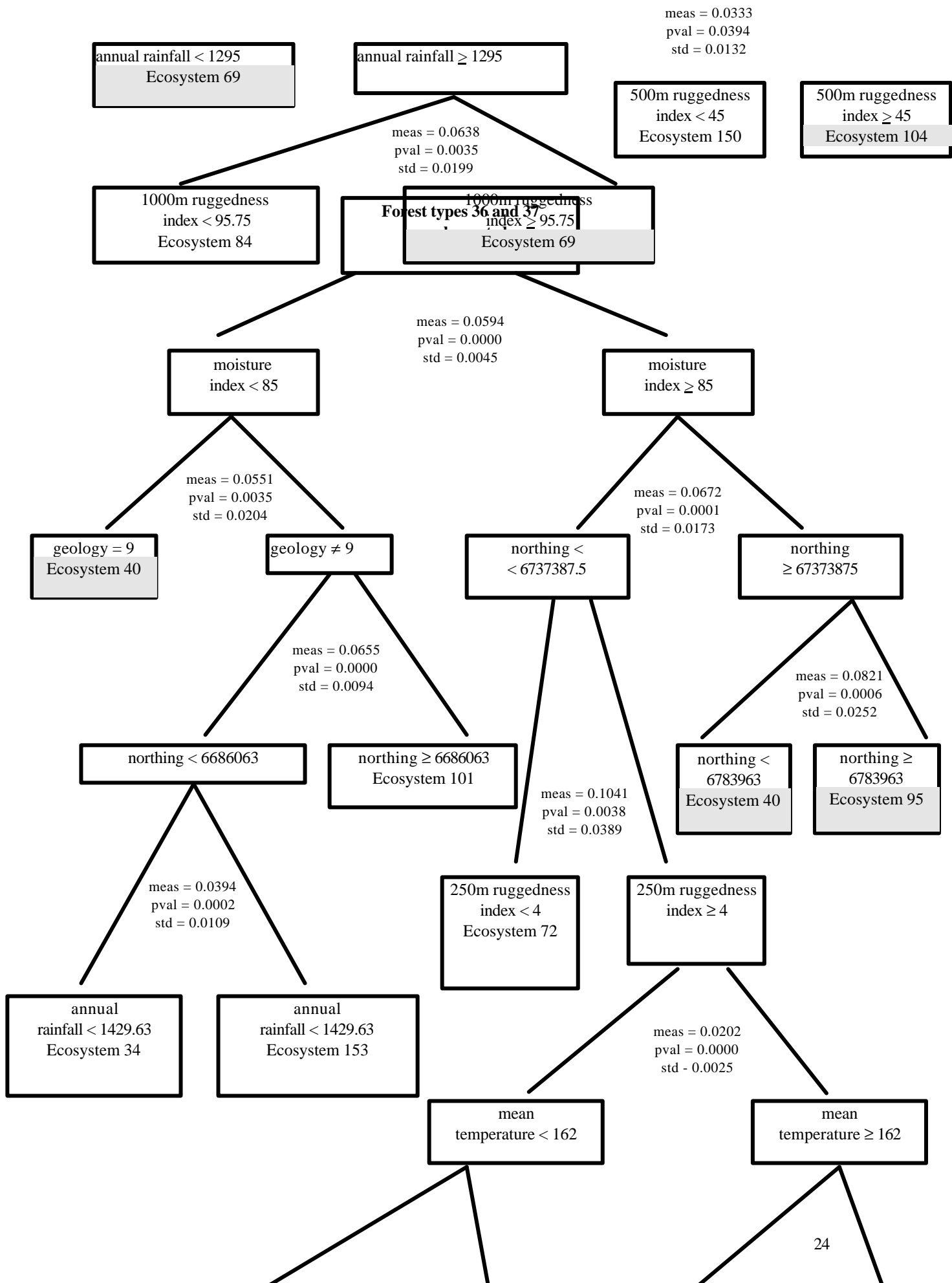












meas = 0.0390
pval = 0.0022
std = 0.0102

driest quarter
rain < 284
Ecosystem 67

driest quarter
rain \geq 284
Ecosystem 83

driest quarter
rain < 213
Ecosystem 32

meas = 0.0485
pval = 0.0001
std = 0.0112

driest quarter
rain \geq 213
Ecosystem 155

