



Australian Government

Independent Observer summary report on *MV Ocean Swagman*

Cattle exported to China in January 2024

August 2024

Voyage summary

Livestock: 7,244 cattle

Vessel: *MV Ocean Swagman*

Loading location : Portland

Discharge location : Huanghua, China

Voyage length: 23 days

Independent Observer: Boarded at Portland and remained onboard until completion of discharge.

Voyage mortality rate: 0.17% (12 mortalities). These mortalities are unlikely to be linked to any systemic failure by the exporter

Notifiable mortality rate: 0.5% for cattle

Summary of observations

This report summarises key observations of the implementation and effectiveness of exporter arrangements to ensure the health and welfare of livestock. The report has been approved by the observer who accompanied the voyage.

Exporter documentation

The observer reported no issues regarding exporter documentation.

Loading

Based on observations made during this voyage, the exporter arrangements relating to loading were appropriate and effective in managing livestock health and welfare.

Personnel

Based on observations made during this voyage, the exporter arrangements relating to personnel were appropriate and effective in managing livestock health and welfare.

Daily routine

Based on observations made during this voyage, the exporter arrangements relating to daily routine were appropriate and effective in managing livestock health and welfare.

Feed and water

The observer noted that on days 21, 22 and 23 of the voyage, only cattle in hospital pens were fed chaff and the remaining cattle were not. The Australian Standards for the Export of Livestock (ASEL) requires that at least 1% of the required daily feed is chaff or hay. No adverse effects on animal health and welfare were observed as a result of chaff not being fed.

Ventilation and voyage conditions

On a previous voyage on the MV *Ocean Swagman*, the observer noted that animals penned close to engine rooms had shown signs of panting or mild heat stress. For this voyage, the observer monitored cattle in the known hot spots and did not identify any health or welfare impacts.

On day 22 of the voyage, the observer recorded a minimum dry bulb temperature of -0.7°C next to the loading ramp on Deck 5. No adverse effects on animal health and welfare were observed as a result of the temperatures throughout the voyage.

Based on observations made during this voyage, the exporter arrangements relating to ventilation were appropriate and effective in managing livestock health and welfare.

Pen conditions

Based on observations made during this voyage, the exporter arrangements relating to pen conditions were appropriate and effective in managing livestock health and welfare.

Health and welfare

No systemic issues observed.

Discharge

Based on observations made during this voyage, the exporter arrangements relating to discharge were appropriate and effective in managing livestock health and welfare.

Representative photographs of voyage

Day 1 Cattle in pen — no issue identified



Day 8 Cattle in pen — no issues identified



Day 6 Cattle eating roughage — no issues identified



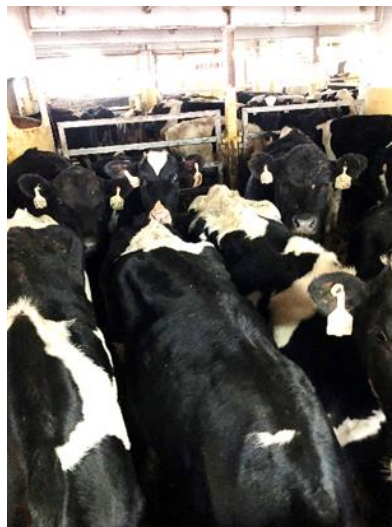
Day 13 Cattle in hospital pen — no issues identified



Day 18 Cattle feeding — no issues identified



Day 19 Cattle in pen — no issues identified



Acknowledgement of Country

We acknowledge the Traditional Custodians of Australia and their continuing connection to land and sea, waters, environment and community. We pay our respects to the Traditional Custodians of the lands we live and work on, their culture, and their Elders past and present.

© Commonwealth of Australia 2024

Unless otherwise noted, copyright (and any other intellectual property rights) in this publication is owned by the Commonwealth of Australia (referred to as the Commonwealth).

All material in this publication is licensed under a [Creative Commons Attribution 4.0 International Licence](#) except content supplied by third parties, logos and the Commonwealth Coat of Arms.

The Australian Government acting through the Department of Agriculture, Fisheries and Forestry has exercised due care and skill in preparing and compiling the information and data in this publication. Notwithstanding, the Department of Agriculture, Fisheries and Forestry, its employees and advisers disclaim all liability, including liability for negligence and for any loss, damage, injury, expense or cost incurred by any person as a result of accessing, using or relying on any of the information or data in this publication to the maximum extent permitted by law.