

s. 22(1)(a)(ii)

From: McEwen, Melissa
Sent: Friday, 2 August 2019 4:57 PM
To: s. 22(1)(a)(ii)
Subject: RE: draft words for email to ALEC [DLM=For-Official-Use-Only]

Looks good to me ^{s. 22(1)(a)}

Melissa McEwen

s. 47F(1)

From: s. 22(1)(a)(ii)
Sent: Friday, 2 August 2019 4:50 PM
To: McEwen, Melissa
Subject: FW: draft words for email to ALEC [DLM=For-Official-Use-Only]

Melissa
For your review. We are just putting the data file together.
Regards

^{s. 22(1)(a)(ii)}

Dear ^{s. 47F(1)} and ^{s. 47F(1)}

s. 22(1)(a)(ii)

In the next few weeks we are hoping to release the discussion paper outlining draft policy options for the regulation of live sheep exports for 2020 onwards. The consultation period will last for 30 calendar days and will give opportunity for feedback on the impacts of these options and any further evidence that the department may not have considered to date. A draft regulation impact statement will be developed from this feedback which will again go out for consultation for another 30 calendar days.

Regards

From: s. 22(1)(a)(ii)

Sent: Friday, 2 August 2019 5:23 PM

To: s. 47F(1)@livexcouncil.com.au; s. 47F(1)

Cc: McEwen, Melissa ; Sheridan, Carol ; s. 22(1)(a)(ii) ; s. 22(1)(a)(ii)

Subject: Bureau of Meteorology revised Wet Bulb Temperature analysis [SEC=UNCLASSIFIED]

Dear s. 47F(1) and s. 47F(1)

s. 22(1)(a)(ii)

In the next few weeks we are hoping to release the discussion paper outlining draft policy options for the regulation of live sheep exports for 2020 onwards. The consultation period will last for 30 calendar days and will give opportunity for feedback on the impacts of these options and any further evidence that the department may not have considered to date. A draft regulation impact statement will be developed from this feedback which will again go out for consultation for another 30 calendar days.

Regards

s. 22(1)(a)(ii)

s. 22(1)(a)(ii)

Director

Livestock Welfare Standards Section

Animal Welfare Branch

LIVE ANIMAL EXPORT DIVISION

Phone: +s. 22(1)(a)(ii) | Email: s. 22(1)(a)(ii)

Mail: GPO Box 858 CANBERRA ACT 2601

Middle East sheep exports policy options discussion paper

Live Animal Exports division

September 2019



© Commonwealth of Australia 2019

Ownership of intellectual property rights

Unless otherwise noted, copyright (and any other intellectual property rights) in this publication is owned by the Commonwealth of Australia (referred to as the Commonwealth).

Creative Commons licence

All material in this publication is licensed under a [Creative Commons Attribution 4.0 International Licence](#) except content supplied by third parties, logos and the Commonwealth Coat of Arms.

Inquiries about the licence and any use of this document should be emailed to copyright@agriculture.gov.au.



Cataloguing data

This publication (and any material sourced from it) should be attributed as: Department of Agriculture 2019, *Middle East sheep exports policy options discussion paper*, Canberra, September. CC BY 4.0.

ISBN 978-1-760003-208-1

This publication is available at agriculture.gov.au/export/controlled-goods/live-animals/livestock/history/review-northern-summer/.

Department of Agriculture
GPO Box 858 Canberra ACT 2601
Telephone 1800 900 090
Web agriculture.gov.au

The Australian Government acting through the Department of Agriculture has exercised due care and skill in preparing and compiling the information and data in this publication. Notwithstanding, the Department of Agriculture, its employees and advisers disclaim all liability, including liability for negligence and for any loss, damage, injury, expense or cost incurred by any person as a result of accessing, using or relying on any of the information or data in this publication to the maximum extent permitted by law.

Contents

Summary	iv
1 Make a submission.....	1
2 Background	2
2.1 Live exports industry	2
2.2 Heat stress risk assessment.....	6
2.3 Current regulatory framework	8
3 What is the policy problem?	9
4 Need for government action	10
4.1 Animal welfare initiatives implemented by the department.....	10
4.2 Determining a way forward for management of heat stress	11
5 Proposed policy options	13
5.1 Option 1: three month prohibition.....	13
5.2 Option 2: apply the 2019 prohibition period.....	14
5.3 Option 3: adopt a revised HSRA model with risk settings based on heat stress thresholds or an approach based on agreed animal welfare indicators.....	14
5.4 Option 4: No prohibition.....	15
Appendix A: Export roadmap	16
Glossary	17
References.....	18

Figures

Figure 1 Australian live exports and Western Australian sheep flock 1988–89 to 2017–18	2
Figure 2 Breakdown of WA sheep turn-off 2006–07 to 2017–18	3
Figure 3 Australian live sheep exports by destination.....	6
Figure 4 HotStuff inputs.....	7
Figure 5 Australian livestock export roadmap	16

Summary

This policy options discussion paper initiates a Regulation Impact Statement (RIS) process to inform future regulation of live sheep exports to, or through the Middle East, from 2020 onwards. It will be open for public comment for 30 days.

The Department of Agriculture seeks feedback from interested stakeholders about the impact of possible policy options that are being considered for regulating sheep exports to, or through the Middle East. These options are provided to generate considered feedback which may include alternative ideas or options.

The department will use information received during public consultation to inform the development of a draft RIS. The RIS will outline the economic and regulatory benefits and impacts of each policy option identified through the consultation process. The draft RIS will be released for a second period of public consultation and all responses from stakeholders will be considered when making final policy recommendations to government.

The intended outcome of adopting one of these policy options, or a valid alternative, is to manage the risk of heat stress in live sheep exports and welfare outcomes on voyages while supporting a sustainable live sheep export trade.

Policy options presented in the discussion paper have been developed after considering information available to the department including the Independent Review of Conditions for The Export of Sheep to the Middle East During the Northern Hemisphere Summer (McCarthy Review), the final report of the Heat Stress Risk Assessment (HSRA) Review (HSRA Review), submissions from the McCarthy Review and HSRA Review, analysis of climatological data provided by the Bureau of Meteorology, voyage reports including analysis of May 2019 voyages, independent observer reports, environmental data and environmental observations aboard vessels that travelled to the Middle East during 2018 and 2019. The department also met with the Western Australian Live Export Reference Group to discuss the possible impact of changes to the regulation of the live sheep export industry.

1 Make a submission

This discussion paper encourages individuals and organisations to make submissions regarding the **impact of the proposed policy options** outlined in [section 5](#).

Submit your feedback through our online stakeholder engagement platform, [Have Your Say](#).

Submissions close 5pm 28 October 2019.

For more information, contact MEsheepexports@agriculture.gov.au.

The department is particularly seeking to **collect evidence and factual data on the impact of each option on you, your organisation and the community**.

We encourage you to consider these questions in your submission:

- **For each option, what do you consider would be the benefits to and impacts on you, your organisation and the community? Please provide any supporting evidence or data that would aid in the assessment of impacts under each option.**
- **Is there a policy option not stated here that would both support a sustainable live sheep export trade and meet the high animal welfare standards expected by the Australian community?**
- **The department is developing an information base to support ongoing analysis and improvements to live animal export regulation. This includes environmental data collected on board live export voyages. What other data should the department consider collecting?**

In making a submission, please provide:

- evidence and data of the benefits and impacts of each option to you, your organisation and the community. The department will respect any request for confidentiality. Please mark your submission as confidential if this is the case. The department may need to incorporate de-identified general evidence in the RIS in consideration of a final decision.
- a copy or link to any supporting evidence relevant to your submission.

Please include in your submission:

- name
- title
- contact address
- telephone number
- organisation, if applicable.

2 Background

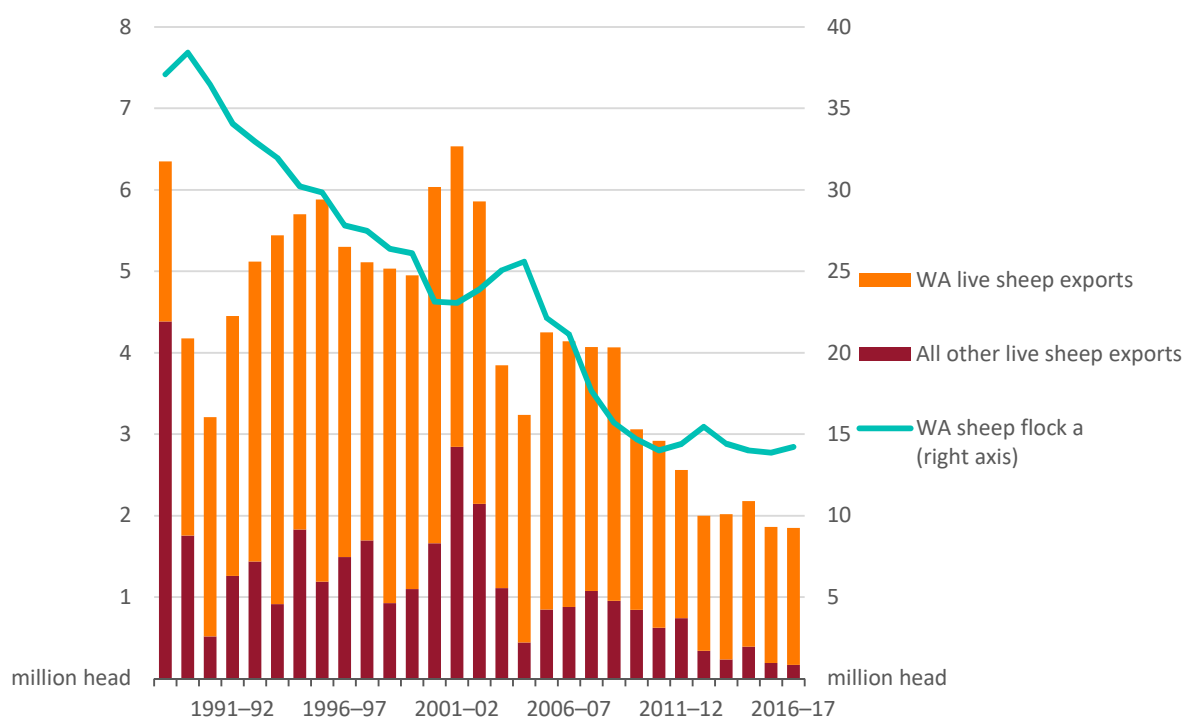
2.1 Live exports industry

In 2017–18 Australia exported 2.0 million live sheep (\$239 million). In that year, live sheep exports contributed 7% of the value of Australia's sheep and sheep meat exports, which represented about 3% of the global trade in sheep meat. Live sheep exports contribute around 0.5% of the value of Australia's total agricultural exports (ABARES 2019).

Exports of live sheep have declined since the 1990s due to a decline in the size of Australia's sheep flock and growing acceptance of chilled and frozen sheep meat in the Middle East (Figure 1). Low wool prices following the collapse of the wool reserve price scheme in 1991 provided a long term incentive for farmers to switch from sheep to cropping. As a consequence, Australia's flock numbers fell from 170 million in 1988–89 to 70 million in 2017–18 (ABS 2013, 2019a).

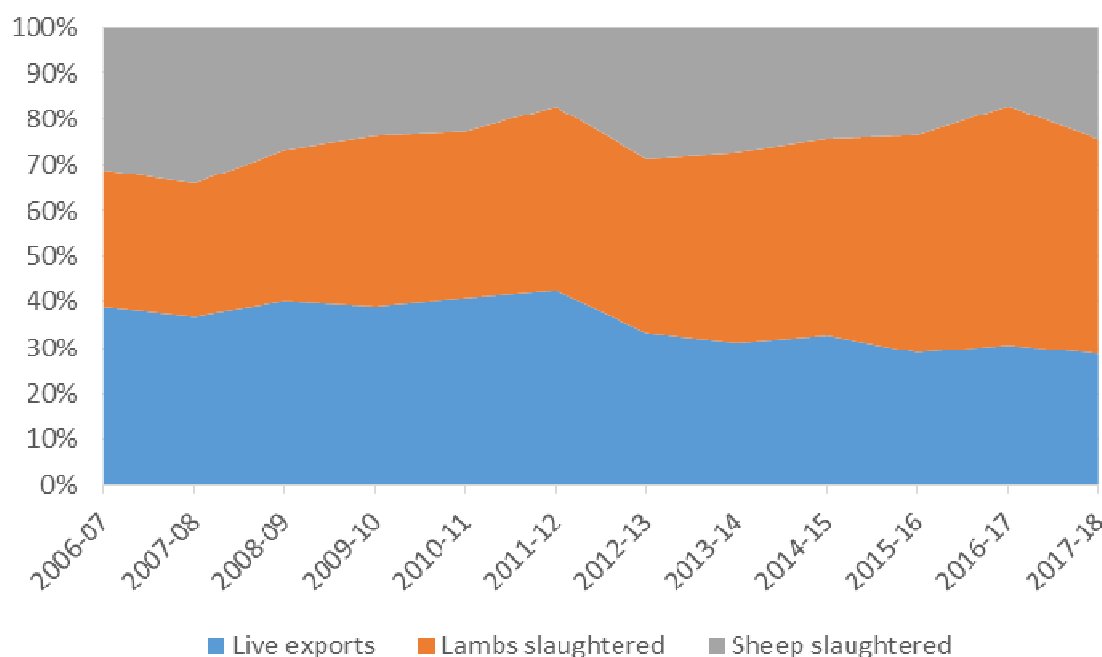
The Western Australian sheep flock was estimated to be 14.5 million in 2017–18 (ABS 2019a). In this financial year, 1.6 million sheep were exported live from WA which equated to 81% of Australia's total (Figure 1).

Figure 1 Australian live sheep exports and Western Australian sheep flock, 1988–89 to 2017–18



Sources: Australian Bureau of Statistics (ABS) 2019, ABS 2013; Australian Bureau of Agricultural Research and Economic Sciences (ABARES).

As a share of total WA turn-off, over the last 5 years, live sheep exports have comprised an average of 30% (Figure 2).

Figure 2 Breakdown of WA sheep turn-off, 2006–07 to 2017–18

Source: ABS 2019b; ABARES

Within Australia, the live sheep export industry has a range of key stakeholders. The export supply chain includes producers, exporters, ship owners and operators, land transporters, operators of registered premises and stock feed manufacturers. [A schematic of the supply chain](#) is outlined in LiveCorp’s road map provided in [Appendix A](#). Other interested parties in live sheep export policy include animal welfare lobby groups, industry groups, meat processors and state and territory governments.

Producers

There are diverse pathways through which sheep are ‘turned off’ or sent to market, making it difficult to identify which farms sell live sheep for export, and what proportion of their income is generated from live exports. Sheep destined for live export are mostly sold directly to buyers representing exporters, although sheep sold through saleyards may also be exported live. In some cases, at the time of sale through saleyards it may not be known if sheep are processed locally or exported live.

A proportion of sheep farms sell sheep for live export every year and most of these are in Western Australia. In 2017–18 there were an estimated 1,800 sheep specialist farms (more than half of their income derived from sheep, lambs and wool), and 2,400 mixed-cropping sheep farms in WA. It is acknowledged that the WA sheep flock has evolved over the last 30 years, from being a wool-dominant flock to a flock producing both wool and sheep meat. In 2017–18, 47% of WA turn-off was lamb slaughter (Figure 2).

Live sheep exports complement and add to the profitability of lamb production for Australian sheep farmers. This is especially true for sheep farmers in WA where a combination of transport, market and agronomic factors have oriented the sheep industry towards live exports. Most of WA’s pastoral areas have a short growing season before hot summer conditions restrict pasture

growth. Therefore lambs may not reach the weight and quality standards of the 'prime' lamb market without supplementary feeding. In these situations, live sheep exports provide Western Australian sheep farmers with a profitable alternative to the local 'prime' lamb market. This means that a farmer can set out at the beginning of the season to produce prime lambs, but sell the same sheep for live export at reasonable prices if seasonal conditions are not favourable. In addition to this, due to proximity, WA has a significant transport advantage to the Middle East relative to eastern states.

Transporters

The Australian Livestock and Rural Transporter's Association is a federation of six state associations, representing around 850 transport businesses. It includes owner-drivers, small fleet operators and large fleet operators. The number of businesses heavily reliant on live exports is likely to be much smaller than this.

In a submission to the HSRA review, the Livestock and Rural Transport Association of Western Australia (LRTAWA) expressed concern for the viability of members' businesses if the live sheep export trade were to end. The LRTAWA stated that uncertainty in the live exports industry was having a 'severe impact' on members' businesses, with some under significant financial pressure.

Registered premises

Registered premises are used for holding and assembling livestock prior to export by sea. Sheep are quarantined for between 3 and 5 days in a registered premises where they undergo inspection for health and welfare and other preparations prior to export.

In Australia, there are currently 13 registered premises approved to hold sheep prior to export. Depending on the time of year, between 75 and 100% of sheep destined for live export to the Middle East will be prepared at 3 of these premises, with all 3 located in WA.

A registered premises may be purpose-built indoor housing in elevated sheds or outdoor housing in paddocks, or a combination of both. Approved holding capacities for premises varies seasonally. The largest premises has a winter holding capacity of 140,000 sheep and a summer holding capacity of 84,000 sheep.

Stock feed manufacturers

Research by the department indicates that there are 6 feed mills supplying feed to the live export sheep trade, 3 in WA, 2 in South Australia and 1 in Victoria. In discussion with industry, it is estimated that for these 6 feed mills, between 50% and 90% of production is for the live sheep trade, producing fodder specifically for consumption at registered premises and during voyages. It is estimated that these feed mills combined would employ around 100 staff.

Meat processors

In 2018, around 70% of sheep sold for meat by WA producers were processed in Australian abattoirs. Approximately 72% of this processed meat was exported as chilled or frozen sheep meat, and 28% was consumed domestically (Western Australian Agriculture Authority 2016).

There are 5 export establishments currently processing sheep meat in WA primarily for export markets. These establishments collectively processed 1.23 million head of sheep between May

2018 and May 2019. Most establishments are running a single chain with slaughter completed between 2.30pm and 4.30pm daily.

Research by the department indicates that the meat processing industry in WA is operating well below capacity as a result of the long-term decline in the state's sheep flock. Based on discussion with industry experts in 2018, it is estimated the under-utilised sheep meat processing capacity in Western Australia is around 2 million head per year. There is the potential for additional capacity to be made through extending processing shifts per day in established premises, however it is recognised that a limiting factor could be availability of skilled labour.

Meat processing often operates seasonally and routinely adapts to quite large fluctuations in demand. The department is aware of some industry interest in increasing existing capacity.

Exporters

There are 40 licensed exporters of sheep from Australia, with 32 of these licensed to export sheep by sea. The majority of sheep exports are undertaken by 15 companies. Two exporters account for just over 50% of the trade.

An estimated 8,000 to 10,000 people are employed in the live export (sheep and cattle) industries (Clarke et al. 2007) including all ancillary industries such as transport, veterinary and feedlot services. The number of people employed exclusively in live exports is expected to be much smaller than this and includes buyers, staff operating registered premises, staff of exporting companies and specialist livestock staff working on ships (who may not be employed under Australian contracts).

Some operators in the live export industry are vertically integrated, owning vessels, feed mills, abattoirs and registered premises.

Ship owners

Fifteen different vessels carried live sheep to the Middle East from 2015 to 2019. Three vessels accounted for almost 75% of live sheep exports from 2015 to 2018. At least 3 vessels currently servicing the Middle East market from Australia are owned by exporters.

Destination markets

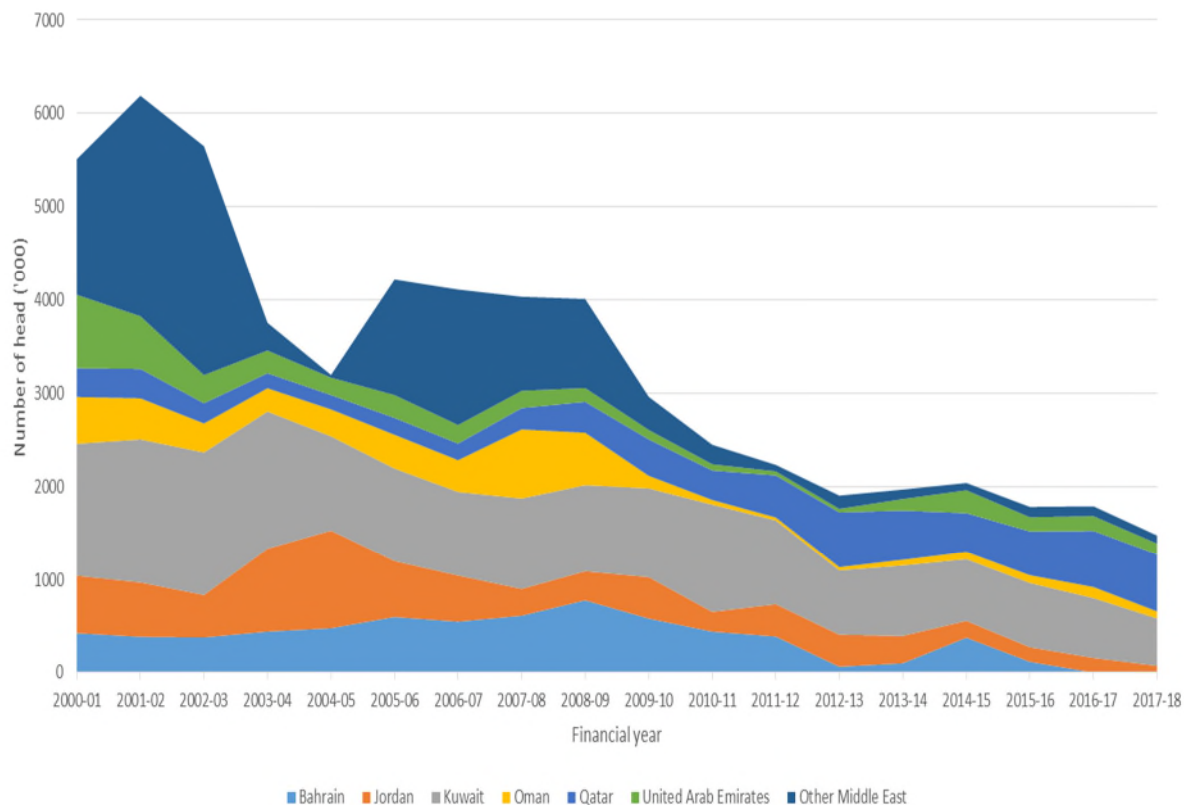
The Gulf Cooperation Council (GCC) countries of Bahrain, Kuwait, Oman, Qatar, Saudi Arabia and United Arab Emirates are the largest market for Australian live sheep exports, accounting for an average of 81% of exports since 1988. However, Australia has not exported live sheep to Saudi Arabia since 2012. The Middle East, including the GCC plus Turkey, Jordan and Israel, as a whole received an average of 96% of Australia's live sheep exports over the same period (Figure 3).

Many countries in the Middle East that import live sheep have historically subsidised consumer prices for food staples. Subsidies generally apply to live animal imports but not to imports of processed meat to assist domestic meat processors. A combination of food subsidies and lower labour costs for meat processing in the Middle East enable exporters to pay Australian farmers a premium for live sheep.

The Middle East is also Australia's largest export market for sheep meat. Growing populations, incomes and changing consumer preferences are driving an increased demand for pre-packaged meat in supermarkets. In response, frozen and chilled sheep meat exports to the Middle East

from Australia increased from around 24,000 tonnes in 2006 to over 50,000 tonnes in 2018. Due to cultural preferences however, it is unlikely that frozen and chilled meat would entirely replace live sheep in the short term.

Figure 3 Australian live sheep exports to Middle East destinations



Source: ABARES 2018

2.2 Heat stress risk assessment

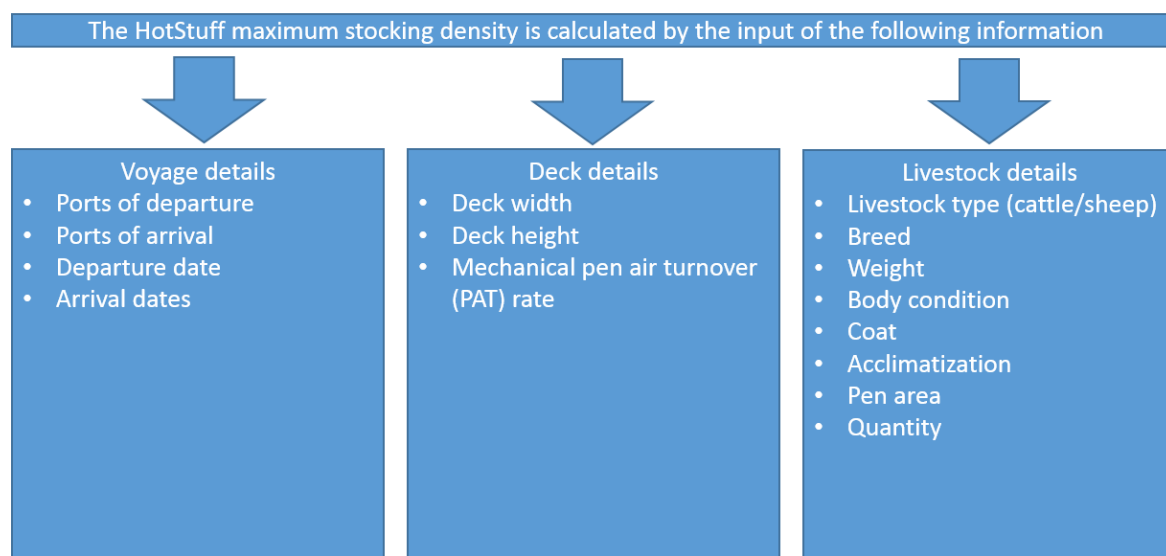
In early 2000, after a series of voyages with unacceptably high levels of heat stress and mortality in livestock, industry moved to develop a scientific method to determine the risk of heat stress for export voyages to the Middle East. A predictive heat stress modelling software tool was developed to assist in risk management planning for voyages to the Middle East. This tool was called HotStuff and is the heat stress risk assessment (HSRA) model used by industry to calculate heat stress risk.

Version 4 of the HotStuff software combines naval and land-based weather data from 2002 to 2010 inclusive, vessel configuration (including ventilation parameters), and voyage and livestock data (Figure 4). HotStuff is designed based on the principle of altering stocking densities and adjusting for the time of year in order to allow sufficient space for airflow and heat removal from livestock vessels (including factoring in the heat generated by animals themselves).

The level of risk, as calculated by HotStuff, was set by industry in 2003 as a 2% risk of a 5% mortality event. The risk level is a 3-part criterion. The first part is the number of animals affected (5%). The second is the probability of the weather conditions that will affect 5% of

animals (2% probability). The third part of the criterion is the physical state of the 5% of animals in the 2% chance of extreme weather; in the current HSRA model, this state is death.

Figure 4 HotStuff inputs



Source: Maunsell 2003

The HSRA model uses wet bulb temperature (WBT) as the environmental measure which combines dry bulb temperature and relative humidity to indicate the capacity of livestock to lose heat. The WBT has been shown to be the most useful measure related to heat stress in a shipboard environment as it most closely influences the physiological impacts of heat load on the animal. If there is effective ventilation, hot and saturated air is blown away from the animals, providing capacity for both convective and evaporative cooling (HSRA Review technical reference panel 2019).

A heat stress risk assessment [was made a regulatory requirement](#) under the Australian Standards for the Export of Livestock (ASEL) in 2004 and is now required for any shipment to, or through, the Middle East. HotStuff version 4 has been the agreed version between industry and the department since 2012.

Wet bulb temperature

WBT can be measured using a standard mercury-in-glass thermometer wrapped in wet muslin, or an environmental data logger. In the case of a standard thermometer, the evaporation of water from the thermometer has a cooling effect, so the 'wet bulb' temperature indicated is less than the temperature indicated by a dry-bulb (normal, unmodified) thermometer (DBT). The rate of evaporation from the wet-bulb thermometer depends on the humidity of the air. For this reason, the difference in the temperatures indicated by WBT and DBT gives an approximate measure of atmospheric humidity.

Data loggers are electronic devices which automatically monitor and record environmental parameters over time. They contain humidity and temperature sensors to receive information and a computer chip to store it. The digital data can be retrieved, viewed and evaluated, giving accurate and reliable information regarding on-deck conditions of sheep.

2.3 Current regulatory framework

The Australian Meat and Live-stock Industry (Standards) Order 2005 requires livestock export licence holders to comply with the Australian Standards for the Export of Livestock (ASEL) (Version 2.3, which is incorporated by reference) when exporting livestock. Compliance with ASEL is, by virtue of the Australian Meat and Live-stock Industry (Standards) Order 2005 and subsection 17(5) of the *Australian Meat and Live-stock Industry Act 1997*, a condition of a livestock export licence. The ASEL represents the minimum animal health and welfare requirements for the conduct of the livestock export industry that the Australian Government expects industry to meet.

ASEL (version 2.3), S4.12 requires that:

‘Stocking densities and pen-group weight-range tolerances for species of livestock must be in accordance with specifications in Appendix 4.1 and heat stress assessment using an agreed heat stress risk assessment...’

[Export Advisory Notice 2012–08](#) identifies HotStuff Version 4 as the agreed model presently used by industry in conducting heat stress risk assessments.

In 2018, based on the McCarthy recommendations, the department implemented changes, outlined in the Australian Meat and Live-stock Industry (Export of Sheep by Sea to Middle East) Order 2018 (Middle East Order) which requires exporters to have a heat stress management plan for each voyage. This includes:

- a reduction in reportable mortality levels from 2% to 1%
- exporters to have a heat stress management plan
- allometric stocking densities requiring between 11–39% more space per sheep depending on weight
- independent verification of pen air turnover
- 10% extra space for horned rams
- all vessels to be installed with automated watering systems
- additional bedding.

The department also implemented a [requirement for independent observers on board live-stock vessels](#) and certain conditions were introduced for exports during the northern winter under the Australian Meat and Live-stock Industry (Export of Sheep by Sea to Middle East – Northern Winter) Order 2018 (Northern Winter Order).

For 2019 only, the Australian Meat and Live-stock Industry (Prohibition of Export of Sheep by Sea to Middle East-Northern Summer) Order 2019 was implemented to prohibit live sheep exports to the Middle East from 1 June 2019 to 30 August 2019. This prohibition was extended to 22 September, for 2019 only, as detailed in the Australian Meat and Live-stock Industry Legislation Amendment (Prohibition of Export of Live Sheep to Middle East-Northern Summer) Order 2019.

3 What is the policy problem?

In April 2018, video footage provided by Animals Australia showed Australian sheep in severe heat stress while being transported to the Middle East on five consecutive voyages, with most footage taken during a voyage in August 2017. The footage publicly exposed unacceptable animal welfare outcomes, shocked the Australian community and undermined public confidence in the live export trade. For the livestock export trade to continue, the public expects transparent regulation of the industry and industry participants to uphold animal welfare standards throughout the entire supply chain.

The unacceptable animal welfare outcomes on the Awassi voyages were not adequately captured by mortality reports or reports by the on board Australian Accredited Veterinarian (AAV). The high mortality incident highlighted weaknesses in the application of heat stress risk management of sheep on these voyages. Animal welfare outcomes have become critical to the ongoing sustainability of the live sheep trade. Consequently there is a need for government to review its regulatory approach to managing animal welfare and heat stress during sheep export voyages to, or through, the Middle East.

4 Need for government action

The Australian Government regulates the live animal export trade under the *Australian Meat and Livestock Industry Act 1997*, the *Export Control Act 1982* and the regulations and instruments subordinate to these acts. The department, as the regulator, is responsible for setting the operating rules for live exports and responding to regulatory failures and non-compliances. The regulatory framework for live animal exports places the responsibility on exporters to ensure the health and welfare of animals throughout the export supply chain. Accordingly, the department relies significantly on industry compliance and reporting.

The Australian Government has committed to upholding the highest standards of animal welfare whilst supporting a sustainable live export trade. In addition to responding to concerns about heat stress on Middle Eastern voyages, the government also responded to public criticism regarding its role as regulator of the live export trade by announcing the Review of the Regulatory Capability and Culture of the Department of Agriculture and Water Resources in the Regulation of Live Animal Exports by Phillip Moss (the Moss review) in April 2018. The department supports, or supports in principle, all 31 recommendations of the Moss review and is working to implement these recommendations as a matter of priority. Examples of this are the establishment of a Principal Regulatory Officer and interim Inspector General of Live Animal Exports and the re-establishment of an Animal Welfare Branch in October 2018, reintroducing animal welfare as a consideration in the department's live animal exports regulatory activities.

4.1 Animal welfare initiatives implemented by the department

In response to the footage, the then Minister for Agriculture and Water Resources announced the [Independent Review of Conditions for the Export of Sheep to the Middle East during the Northern Hemisphere Summer](#) by Dr Michael McCarthy (McCarthy review). Dr McCarthy made 23 recommendations for conditions and actions to assure health and welfare outcomes for sheep being transported to the Middle East during the northern summer.

The Australian Government supported the McCarthy review recommendations for the development of effective measures to manage heat stress for sheep in the live export trade. In particular, the recommendation that there should be a move 'from a risk assessment based on mortality to a risk assessment based on animal welfare'. In terms of immediate action based on the McCarthy recommendations, the department implemented the Australian Meat and Livestock Industry (Export of Sheep by Sea to Middle East) Order 2018 (Middle East Order) (Section 2.3).

In addition to these changes, the department implemented a [requirement for independent observers on board livestock vessels and certain conditions were required for exports during the northern winter](#) under the Australian Meat and Livestock Industry (Export of Sheep by Sea to Middle East – Northern Winter) Order 2018 (Northern Winter Order).

The department implemented interim conditions for the 2019 Northern Hemisphere summer. This included the prohibition of live sheep exports from 1 June to 22 September 2019 to, or through, the Middle East. Exporters were also required to take automated environmental

measurements on all decks on sheep voyages to the Middle East during May, September and October 2019.

4.2 Determining a way forward for management of heat stress

In May 2018, the then Minister for Agriculture and Water Resources accepted the McCarthy report recommendations, including recommendations 3–5, 7 and 8 relating to the management of heat stress on voyages to, or through, the Middle East. The department established an independent technical reference panel in June 2018 to guide consultation with stakeholders and provide expert advice on HSRA and the science of heat stress in sheep exported live by sea. [The final report by the panel](#) made recommendations on the development of a new HSRA framework based on animal welfare, moving away from the current framework based on mortality rates .

In developing the proposed policy options in this document, the department considered:

- the HSRA review
- the McCarthy Review
- submissions to the HSRA review issues paper and draft report
- voyage reports
- independent observer reports
- environmental observations aboard vessels that travelled to the Middle East during May 2018 and 2019.

The department also engaged with the West Australian Live Export Reference Group.

The department recognises there are risks of not reviewing regulation about heat stress in sheep on Middle East voyages including:

- unacceptable animal welfare outcomes on voyages to, or through, the Middle East
- damage to Australia’s reputation with regards to animal welfare and as a producer of high quality livestock
- loss of trust in government regulation
- loss of the live export industry’s ‘social license’ to operate
- cessation of the live export trade
- decline in consumer trust for livestock production systems in general.

The regulatory policy will consider the responses to this discussion paper and to the later draft RIS. Decisions on policy settings will provide clarity about the future of the trade for those directly impacted, including international trading partners. The policy on the management of heat stress in sheep exports to, or through, the Middle East will make tangible, positive steps towards improved animal welfare outcomes and support the sustainability of the live sheep export trade.

The department notes that future regulatory policy settings could consider validated, new technology, such as dehumidification, which may help mitigate the risk of heat stress in live sheep export voyages to the Middle East.

5 Proposed policy options

The department is seeking feedback on 4 possible policy option ideas as it considers framing options for the Regulation Impact Statement. Alternative policy ideas are invited in feedback from stakeholders.

The 4 policy option ideas are:

- 1) Three month prohibition—Conditions under the Middle East Order apply for the northern summer months and industry continue to use the existing HSRA model or agreed animal welfare indicators.
- 2) Apply the 2019 prohibition period—Conditions under the Middle East Order apply for the northern summer months. The department would remove the requirement for a HSRA on live sheep export voyages to, or through, the Middle East.
- 3) Adopt a revised HSRA model with risk settings based on heat stress thresholds or agreed animal welfare indicators.
- 4) No prohibition—live sheep exports to, or through the Middle East would be permitted 12 months of the year. Conditions under the Middle East Order apply for the northern summer months and industry continue to use the existing HSRA model.

5.1 Option 1: three month prohibition

Option 1 would include a 3 month prohibition during the hottest period of the northern summer. The department seeks feedback from industry on the most appropriate months to be included in the prohibition. Exporters would continue to comply with the additional regulatory requirements in the Middle East Order and any further changes that may arise from the ASEL sea review.

The existing HSRA model, with current risk settings, or an approach based on agreed animal welfare indicators would be used to assess risk in sheep voyages to, or through, the Middle East. The reference to welfare indicators in this option provides an opportunity for stakeholders to comment on the role they may play in a future regulatory framework. The department is aware of an industry project still in progress to develop and trial animal welfare indicators for the livestock export industry.

The department is also interested to receive feedback from stakeholders on whether the current risk settings in the HSRA model remain appropriate.

Initial analysis by the department indicates that, excluding the hottest months of the year, HotStuff version 4 is unlikely to require greater pen space allowances than allometric pen space requirements under the Middle East Order.

In addition:

- the department could assess the ‘shoulder’ periods of the prohibition on a case by case basis to give consideration to weather forecasts that may significantly differ from historical averages. This may extend or reduce the prohibited period for a given shoulder period.

- exporters would be required to place automated data (WBT) logging equipment on board vessels during the northern summer months, and to report that data to the department. This would better inform future regulation.

This option recognises the regulatory changes already implemented in the interest of animal welfare with a reduced prohibited period compared to 2019. Industry have acknowledged the appropriateness of a prohibition as a balance between animal welfare and trade, as demonstrated by the moratorium on exports in 2019.

Option 1 would have minimal further impact on industry. With this option, there remains some risk of a heat stress incident, particularly during the ‘shoulder’ periods of the prohibition. The science and evidence reviewed by the department does not support a shorter prohibition because ships departing in late May and June travel into much hotter weather and September remains very hot.

5.2 Option 2: apply the 2019 prohibition period

Option 2 would include a prohibition as applied in 2019. Outside the prohibition period, exporters would continue to comply with the additional regulatory requirements under the Middle East Order during the northern summer and any further changes that may arise from the ASEL sea review.

This option takes an adaptive approach to regulation through these measures:

- the prohibition would exclude the hottest times of the year from trade, when sheep are acclimatised to cooler Australian temperatures, to provide more confidence that heat stress and animal welfare are managed.
- exporters would be required to place automated data (WBT) logging equipment on board vessels during the northern summer months, and to report that data to the department. This would better inform future regulation.

Recognising the benefits of allometric space allowances, the department would remove the requirement for a HSRA, reducing the regulatory burden for exporters.

The practical implications of option 2 mean:

- the trade would occur for just over 8 months of the year.
- exports would be permitted during May. May is an important month for sheep turn off in Western Australia and allowing trade for May will maintain this channel for producers.

5.3 Option 3: adopt a revised HSRA model with risk settings based on heat stress thresholds or agreed animal welfare indicators

Under option 3 a revised HSRA model would be adopted where risk settings were based on heat stress thresholds (HSTs) or an approach based on agreed animal welfare indicators (refer to Section 5.1). Exporters would continue to comply with the regulatory requirements in the Middle East Order and any further changes that may arise from the [ASEL sea review](#). Using an HSRA model based on HSTs would significantly lower the risk that any sheep exported to the Middle East would experience unsatisfactory welfare from heat stress in any given month.

One approach to recognising that a sheep's welfare is adversely affected well before mortality occurs, is to base the assessment of heat stress risk on a WBT welfare threshold instead of a mortality limit, as currently used. The WBT welfare thresholds in this option are consistent with the HSTs currently embedded (but not used) in the HSRA model, HotStuff V4.0 ([refer to section 2.2](#)).

In practical terms, using a revised HSRA model based on HSTs or an approach based on agreed animal welfare indicators could significantly reduce volumes of sheep permitted to be exported to the Middle East during the Northern Hemisphere summer. The magnitude of impact will differ across different classes of sheep, ship ventilation efficiency and at different times of the year. Based on preliminary analysis a revised HSRA could have these impacts:

- prohibiting or substantially reducing exports from May to September (inclusive)
- reduce annual exported volumes of adult sheep by approximately 40–60% (or more) for October due to greater requirements for pen space
- effectively prohibit lamb exports for the Northern Hemisphere summer period. Recommendation 3 of the HSRA review proposes that the definition of lamb and appropriate associated HSTs in the HSRA model be revised.

[The HSRA Review](#) recommended the revised HSRA model be set at a 2% probability that deck temperatures would exceed a sheep's HST. The department also considered a 5% probability marker, however our initial analysis found that this did not materially affect volumes of sheep able to be exported. The department would be interested in receiving commentary from stakeholders regarding their views on risk settings.

5.4 Option 4: No prohibition

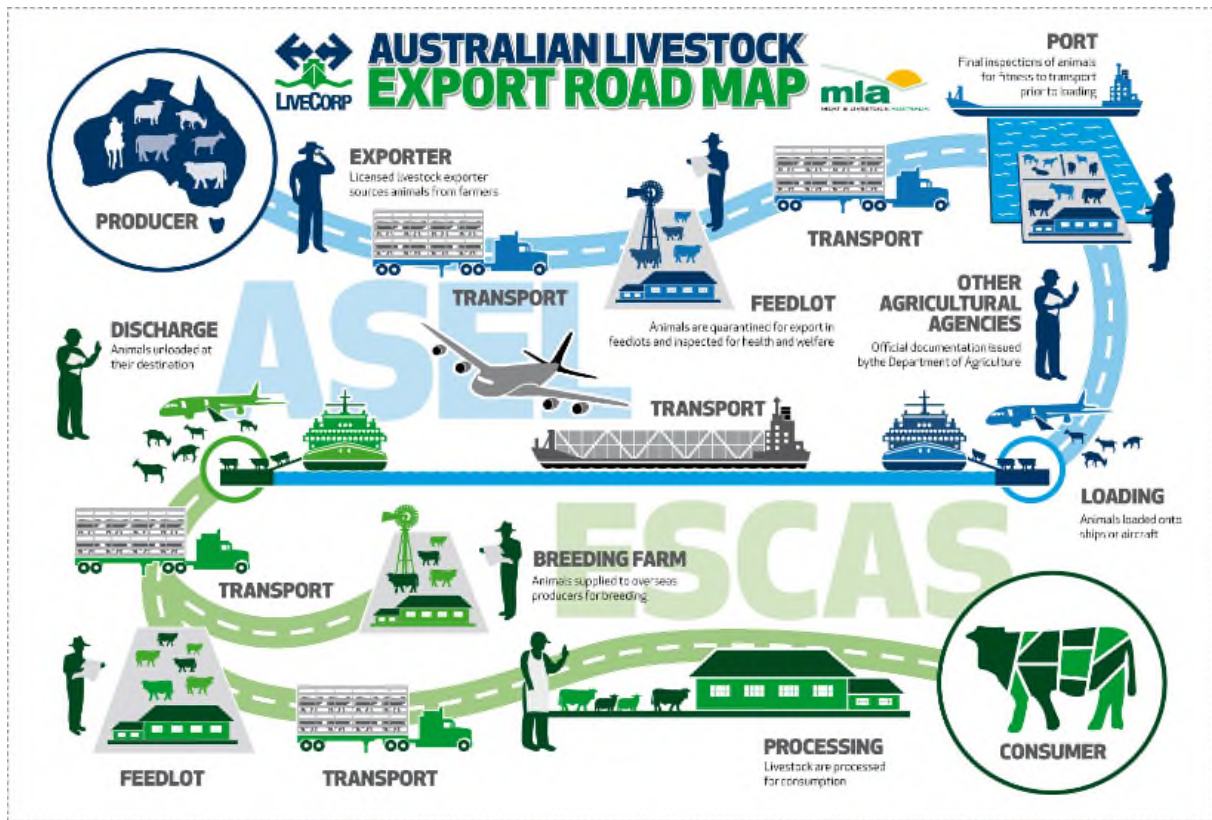
Option 4 would regulate live sheep exports to, or through, the Middle East during the northern hemisphere summer in accordance with requirements implemented under the Middle East Order, and any further changes that may arise from the ASEL sea review. This would include using allometric pen space allowances. There would be no prohibition on trade.

The existing HSRA model would continue to determine stocking densities for voyages, however initial analysis by the department indicates that this may have little impact on allometric pen space allowances.

Option 4 would have the least impact on industry, however, the science and evidence (including historical voyage outcomes) indicates that with this option there is a significant risk of a heat stress incident. The department seeks feedback from industry on how it would manage this risk.

Appendix A: Export roadmap

Figure 5 Australian livestock export roadmap



Source: LiveCorp; Meat & Livestock Association

Glossary

Term	Definition
Allometric	The relationship of body size to shape, anatomy, physiology and behaviour
Heat load	Exposure of livestock to hot environmental conditions likely to require physiological changes to allow them to maintain homeostatic body temperature
Heat stress	Excessive heat load
HotStuff V4.0	Software program for the assessment of heat stress risk for live export voyages
McCarthy review	Independent review into conditions for sheep being transported to the Middle East during the Northern Hemisphere summer published May 2018
Mortality limit	The wet bulb temperature at which the animal will die
Northern Hemisphere summer	Refers to the months of May to October
Northern Hemisphere winter	Refers to the months of November to April
Stocking density	Number of stock per unit area in a high-density housing situation
Summer months	Referring to Northern Hemisphere: May to October
The department	The Australian Government Department of Agriculture
The HSRA model	Heat stress risk assessment model (HotStuff V4.0)
The panel	Heat Stress Risk Assessment Review Technical Reference Panel
WBT welfare threshold	Using animal characteristics such as sheep class, weight, acclimatisation, body condition and fibre length, a temperature threshold is set to minimise the risks to the welfare of sheep (HSRA review technical reference panel, 2019).
Winter months	Referring to Northern Hemisphere: November to April

References

- ABARES 2019, [Agricultural commodities: March quarter 2019](#), Australian Bureau of Agricultural and Resource Economics and Sciences, Canberra, December. CC BY 4.0.
- ABARES 2018, [Agricultural commodities: December quarter 2018](#): December quarter 2018, Australian Bureau of Agricultural and Resource Economics and Sciences, Canberra, December. CC BY 4.0.
- ABS 2013, Historical Selected Agriculture Commodities, by State (1861 to Present), cat. no. 7124.0, accessed June 2019.
- ABS 2019a, *Agricultural Commodities*, Australia, 2017-18, cat. no 7121.0, accessed May 2019.
- ABS 2019b, *Livestock and Meat*, Australia, cat. no 7218.0, accessed May 2019.
- ABS 2019c, 7215.0 *Livestock Products*, Australia, accessed May 2019.
- Clarke, M, Morison, J & Yates, W 2007, *The live export industry—assessing the value of the livestock export industry to regional Australia*, AgEconPlus and Warwick Yates and Associates for Meat & Livestock Australia, Sydney.
- HSRA Review technical reference panel final report, Department of Agriculture, Canberra.
- Maunsell Australia 2003, *Development of a heat stress risk management model* (LIVE.116), Meat & Livestock Australia, North Sydney, Australia.
- Western Australian Agricultural Authority 2016, [Western Australian Sheep Industry, accessed June 2019](#)

From: Animal Welfare Inbox
Sent: Friday, 20 September 2019 10:59 AM
Subject: s. 22(1)(a)(ii)

[SEC=UNCLASSIFIED]

Good morning LEAWAG members,

s. 22(1)(a)(ii)

To initiate the RIS process, the department intends to release a discussion paper outlining proposed policy option ideas for 30 days of public consultation. We are seeking feedback on the possible impact of these options or any alternative ideas. We will soon be in contact with more information. If you have any questions regarding the HSRA final report please call Jim Paradise on s. 47F(1) or s. 22(1)(a)(ii) on s. 22(1)(a)(ii).

Regards

[Jim Paradise](#)

A/g Assistant Secretary

Animal Welfare Branch

LIVE ANIMAL EXPORT DIVISION

DEPARTMENT OF AGRICULTURE

Phone: s. 47F(1) | Email: jim.paradice@agriculture.gov.au

Mail: GPO Box 858 CANBERRA ACT 2601

Archived: Tuesday, 29 October 2019 10:34:14 AM

From: s. 47F(1)

Sent: Fri, 20 Sep 2019 11:03:06

To: Paradise, Jim; s. 22(1)(a)(ii)

Cc: McEwen, Melissa; Hutchison, Tina; s. 22(1)(a)(ii)

Subject: RE: draft email to industry (we've assumed this to be ALEC and LiveCorp) [SEC=UNCLASSIFIED]

Sensitivity: Normal

Document 5

Thanks Jim

s. 47F(1)

Australian Livestock Exporters' Council

s. 47F(1)

Information contained in this e-mail or attachments is privileged and confidential and copying or distribution is prohibited. If you have received this communication in error, please contact the sender.

From: Paradise, Jim

Sent: Friday, 20 September 2019 10:18 AM

To: s. 47F(1) ; s. 22(1)(a)(ii)

Cc: McEwen, Melissa ; Hutchison, Tina ; s. 47F(1)

Subject: FW: draft email to industry (we've assumed this to be ALEC and LiveCorp) [SEC=UNCLASSIFIED]

Good morning s. 47F(1) and s. 22(1)(a)

s. 22(1)(a)(ii)

The RIS process will include two public consultation periods during which the department will engage with industry and other stakeholders. We expect the first of these to begin in the near future which will include the release of a discussion paper with proposed policy option ideas. We are seeking feedback on the impact of these to stakeholders or indeed any alternative ideas which should be considered.

We will be in contact with you shortly to advise of the next steps and look forward to receiving your contributions.

s. 22(1)(a)(ii)

Regards

Jim

Jim Paradise

a/g Assistant Secretary

Animal Welfare Branch | Live Animal Exports Division

p: s. 47F(1) | w: www.agriculture.gov.au

Department of Agriculture
GPO Box 858 Canberra ACT 2601 Australia

\f0----- IMPORTANT - This email and any attachments have been issued by the Australian Government Department of Agriculture. The material transmitted is for the use of the intended recipient only and may contain confidential, legally privileged, copyright or personal information. You should not copy, use or disclose it without authorisation from the Department. It is your responsibility to check any attachments for viruses and defects before opening or forwarding them. If you are not an intended recipient, please contact the sender of this email at once by return email and then delete both messages. Unintended recipients must not copy, use, disclose, rely on or publish this email or attachments. The Department of Agriculture is not liable for any loss or damage resulting from unauthorised use or

dissemination of, or any reliance on, this email or attachments. If you have received this e-mail as part of a valid mailing list and no longer want to receive a message such as this one, advise the sender by return e-mail accordingly. This notice should not be deleted or altered -----

Archived: Wednesday, 22 January 2020 9:44:31 AM

From: Paradise, Jim

Sent: Fri, 20 Sep 2019 10:23:31

To: ^{s. 47F(1)}@livexcouncil.com.au; s. 22(1)(a)(ii)

Cc: McEwen, Melissa; Hutchison, Tina; s. 22(1)(a)(ii)

Subject: Release of the HSRA Review Final Report [SEC=UNCLASSIFIED]

Sensitivity: Normal

Document 6

Good morning ^{s. 47F(1)} and ^{s. 22(1)(a)(ii)}

s. 22(1)(a)(ii)

The RIS process will include two public consultation periods during which the department will engage with industry and other stakeholders. We expect the first of these to begin in the near future which will include the release of a discussion paper with proposed policy option ideas. We are seeking feedback on the impact of these to stakeholders or indeed any alternative ideas which should be considered.

We will be in contact with you shortly to advise of the next steps and look forward to receiving your contributions.

s. 22(1)(a)(ii)

Regards

Jim

Jim Paradise

a/g Assistant Secretary

Animal Welfare Branch | Live Animal Exports Division

p: s. 47F(1) | w: www.agriculture.gov.au

Department of Agriculture
GPO Box 858 Canberra ACT 2601 Australia

Archived: Tuesday, 29 October 2019 10:35:19 AM

From: Paradise, Jim

Document 7

Sent: Thu, 26 Sep 2019 12:20:51

To: s. 22(1)(a)(ii)

Subject: FW: Talking Points - Live sheep exports to the Middle East - release of policy options discussion paper [DLM=For-Official-Use-Only]

Sensitivity: Normal

Attachments:

Dept TPs - sheep exports discussion paper consultation - FINAL AS clear....docx; Ministerial TPs - sheep exports discussion paper consultation - FINAL AS....docx;

Hi

I meant to cc you also.

Regards

Jim

From: Paradise, Jim

Sent: Thursday, 26 September 2019 12:16 PM

To: Thompson, Malcolm <Malcolm.Thompson@agriculture.gov.au>

Cc: McEwen, Melissa <Melissa.McEwen@agriculture.gov.au>; s. 22(1)(a)(ii) s. 22(1)(a)(ii)

; Hutchison, Tina

<Tina.Hutchison@agriculture.gov.au>

Subject: FW: Talking Points - Live sheep exports to the Middle East - release of policy options discussion paper [DLM=For-Official-Use-Only]

Hi Malcolm

Thanks for your comments on the TPs we have updated the docs to reflect your edits. We have also amended the Discussion Paper to reflect comments on the development of the animal welfare indicators. The final TPs are now attached. We are intending to release the Discussion Paper at 11am tomorrow. I will advise ALEC (s. 47F(1)) and s. 22(1)(a)(ii) (s. 22(1)(a)(ii)) this afternoon about the release.

Regards

Jim

From: s. 22(1)(a)(ii)

Sent: Thursday, 26 September 2019 11:55 AM

To: Ag Media <Media@agriculture.gov.au>; s. 22(1)(a)(ii)

Cc: Paradise, Jim <Jim.Paradice@agriculture.gov.au>; s. 22(1)(a)(ii)

>; McEwen, Melissa

<Melissa.McEwen@agriculture.gov.au>

Subject: Talking Points - Live sheep exports to the Middle East - release of policy options discussion paper [DLM=For-Official-Use-Only]

Hi s. 22(1)(a)(ii) and team,

Please find attached ministerial and departmental TPs, cleared by Jim as acting AS.

As discussed, thank you for your assistance to draft a media release.

We are intending to go live with the consultation on the discussion paper around 11am-ish tomorrow.

Regards

s. 22(1)(a)



Media talking points - Departmental

Version 1.0

Middle East sheep exports policy options discussion paper

Key messages

- The department is conducting a Regulation Impact Statement (RIS) process to inform future regulation of live sheep exports from 2020 onwards. A RIS process examines the economic and social costs and benefits of a regulatory proposal.
- The draft RIS will consider a range of policy options and the potential economic and regulatory impact of these options on individuals, businesses and communities involved in the live sheep export trade.
- To initiate the RIS process, the department has prepared a discussion paper outlining possible policy option ideas for sheep exports to, or through, the Middle East during the northern hemisphere summer.
- The department has released the discussion paper for a 30 day public consultation process via the departments' 'Have Your Say' website, closing 28 October 2019.
- The final review of the independent Heat Stress Risk Assessment (HSRA) Technical Reference Panel (TRP) was released on 20 September. The review is one of the information sources that will inform the development of the RIS.
- The department is seeking input from stakeholders on the economic and regulatory impact of each option.
- The department also welcomes proposals of, and input for, alternative options.
- The policy option ideas outlined in the discussion paper can be summarised as:
 - **Option one:** Apply a three month prohibition – Conditions under the Middle East Order apply for the northern summer months and industry continue to use the existing HSRA model or agreed animal welfare indicators.
 - **Option two:** Apply the 2019 prohibition: Conditions under the Middle East Order apply for the northern summer months. The department would remove the requirement for a HSRA on live sheep export voyages to, or through, the Middle East.
 - **Option three:** Adopt a revised HSRA model with risk settings based on heat stress thresholds or agreed animal welfare indicators.
 - **Option four:** No prohibition. Live sheep exports to, or through, the Middle East would be permitted 12 months of the year. Conditions under the Middle East Order apply for the northern summer months and industry continue to use the existing HSRA model.
- In drafting the policy options, the department considered information including the McCarthy Review, the HSRA Review, submissions to consultation processes for these reviews and the northern summer conditions, voyage reports, independent observer reports, analysis of climatological data by the Bureau of Meteorology (Bureau), analysis of the environmental data and observations aboard vessels that travelled to the Middle East during May 2019. The

TALKING POINTS ARE SUBJECT TO CHANGE AND ARE NOT FOR EXTERNAL DISTRIBUTION

department also met with the Western Australian Live Export Reference Group to discuss the possible impact of changes to the regulation of the live sheep export industry.

- The department notes that a project to develop and trial animal welfare indicators is currently being conducted by industry. Until this project is completed, the reference to welfare indicators in the options provides an opportunity for stakeholders to comment on the role they may play in a future regulatory framework.
- Following consultation on the discussion paper, the department will develop a draft RIS and intends to release this for further public consultation. Responses from stakeholders will be considered when making final policy recommendations.
- The final policy decision on the management of heat stress in sheep exports to, or through, the Middle East will make tangible, positive steps towards improved animal welfare outcomes and support the sustainability of the live sheep export trade.

If asked**In what ways has the government already acted to improve animal welfare outcomes?**

- The Australian Government has committed to upholding the highest standards of animal welfare whilst supporting a sustainable live export trade. Actions the government has already implemented include:
 - An Order prohibiting sheep exports to the Middle East from 1 June to 22 September 2019
 - Allometric stocking densities during the northern summer requiring between 11 and 39 per cent more space per sheep depending on weight
 - Independent observers on all vessels travelling to, or through the Middle East, to support verification and compliance activities
 - Independent auditing of pen air turnover (PAT)
 - Automated watering systems for vessels to the Middle East
 - Additional bedding
 - Environmental data monitoring of any voyages to, or through, the Middle East during the northern hemisphere summer to better inform future policy development
 - Establishing the statutory position for an independent Inspector-General of Live Animal Exports to oversee regulation of the industry.

What will be the impact of these policy options on trade?

- The department is seeking feedback on impacts of the proposed policy option ideas on individuals, business and communities that may be affected by a change in policy.
- This feedback will be considered as part of the regulatory impact analysis when drafting the RIS. The purpose of a RIS is to analyse the economic and regulatory costs and benefits of different policy options.

TALKING POINTS ARE SUBJECT TO CHANGE AND ARE NOT FOR EXTERNAL DISTRIBUTION**What are the details of conditions under Option One?**

- Option one would include a 3 month prohibition during the hottest period of the northern summer. There remains some risk of a heat stress incident with this option, particularly during the 'shoulder' periods of the prohibition.
 - Any trade during the northern hemisphere summer months would be required to comply with conditions under the existing *Australian Meat and Live-stock Industry (Export of Sheep by Sea to Middle East) Order 2018* (Middle East Order).
 - The department is seeking stakeholder feedback on appropriate dates for the 3 month prohibition.
 - The existing HSRA model or one based on agreed animal welfare indicators would be used to assess or manage risk in sheep voyages to, or through, the Middle East.
 - The department could assess the 'shoulder' periods of the prohibition on a case by case basis to give consideration to weather forecasts that may significantly differ from historical averages. This may extend or reduce the prohibited period for a given shoulder period.

What are the details of conditions under Option Two?

- Option two would include the same prohibition period to the 2019 northern hemisphere summer and reduces the risk of a heat stress event through the following measures:
 - The prohibition would exclude the hottest times of the year from trade, when sheep are acclimatised to cooler Australian temperatures.
 - Any trade during the northern hemisphere summer months would be required to comply with conditions under the existing Middle East Order.
 - Recognising the benefits of allometric space allowances, the department would remove the requirement for a Heat Stress Risk Assessment, reducing the regulatory burden for exporters.

What are the details of conditions under Option Three?

- Under option three, a revised HSRA model would be adopted where risk settings were based on heat stress thresholds (HSTs) or agreed animal welfare indicators. Exporters would continue to comply with the regulatory requirements in the Middle East Order. Based on preliminary departmental analysis an HSRA based on HSTs could have the following impact:
 - Prohibit or substantially reduce sheep exports from May to September (inclusive)
 - Reduce annual exported volumes of adult sheep by 40-60 % (or more) for October due to greater pen space requirements
 - Prohibit lamb exports for the whole northern hemisphere summer

What are the details of conditions under Option Four?

- Under option four there would be no prohibition on trade. Exporters would continue to comply with the regulatory requirements in the Middle East Order.
- Option four would have the least impact on industry, however, the science and evidence (including historical voyage outcomes) indicates that with this option there is a significant risk of a heat stress incident. The department seeks feedback from industry on how it would manage this risk.



Media talking points - Ministerial

Version 1.0

Middle East sheep exports policy options discussion paper

Key messages

- The department is conducting a Regulation Impact Statement (RIS) process to inform future regulation of live sheep exports to the Middle East from 2020 onwards. A RIS process examines the economic and social costs and benefits of a regulatory proposal.
- The draft RIS will consider a range of policy options and the potential economic and regulatory impact of these options on individuals, businesses and communities involved in the live sheep export trade.
- To initiate the RIS process, the department has prepared a discussion paper outlining possible policy option ideas for sheep exports to, or through, the Middle East during the northern hemisphere summer.
- The department has released the discussion paper for a 30 day public consultation process via the departments' 'Have Your Say' website, closing on 28 October 2019.
- The department is seeking input from stakeholders on the economic and regulatory impact of each option and also welcomes proposals of, and input for, alternative options.
- The policy option ideas outlined in the discussion paper can be summarised as:
 - **Option one:** Apply a three month prohibition – Conditions under the Middle East Order apply for the northern summer months and industry continue to use the existing HSRA model or agreed animal welfare indicators.
 - **Option two:** Apply the 2019 prohibition: Conditions under the Middle East Order apply for the northern summer months. The department would remove the requirement for a HSRA on live sheep export voyages to, or through, the Middle East.
 - **Option three:** Adopt a revised HSRA model with risk settings based on heat stress thresholds or agreed animal welfare indicators.
 - **Option four:** No prohibition. Live sheep exports to, or through, the Middle East would be permitted 12 months of the year. Conditions under the Middle East Order apply for the northern summer months and industry continue to use the existing HSRA model.
- Following consultation on the discussion paper, the department will develop a draft RIS and intends to release this for further public consultation. Responses from stakeholders will be considered when making final policy recommendations.
- The final policy decision on the management of heat stress in sheep exports to, or through, the Middle East will make tangible, positive steps towards improved animal welfare outcomes and support the sustainability of the live sheep export trade.

TALKING POINTS ARE SUBJECT TO CHANGE AND ARE NOT FOR EXTERNAL DISTRIBUTION**If asked****How did the department develop their policy option ideas?**

- The department considered information including the McCarthy review, the heat stress risk assessment review, submissions to consultation processes for these reviews and the northern summer conditions, voyage reports, independent observer reports, analysis of climatological data by the Bureau of Meteorology (Bureau), analysis of the environmental data and observations aboard vessels that travelled to the Middle East during May 2019. The department also met with the Western Australian Live Export Reference Group to discuss the possible impact of changes to the regulation of the live sheep export industry.

What are animal welfare indicators?

- The live export industry are developing and validating a series of animal welfare indicators to assess conditions and welfare of live export animals through behavioural expression.
- The reference to animal welfare indicators in the policy option ideas in the discussion paper provides an opportunity for stakeholders to comment on the role these indicators may play in a future regulatory framework.

In what ways has the government already acted to improve animal welfare outcomes?

- The Australian Government has committed to upholding the highest standards of animal welfare whilst supporting a sustainable live export trade. Actions the government has already implemented include:
 - An Order prohibiting sheep exports to the Middle East from 1 June to 22 September 2019
 - Allometric stocking densities during the northern summer requiring between 11 and 39 per cent more space per sheep depending on weight
 - Independent observers on all vessels travelling to, or through the Middle East, to support verification and compliance activities
 - Independent auditing of pen air turnover (PAT)
 - Automated watering systems for vessels to the Middle East
 - Additional bedding
 - Environmental data monitoring of any voyages to, or through, the Middle East during the northern hemisphere summer to better inform future policy development
 - Establishing the statutory position for an independent Inspector-General of Live Animal Exports to oversee regulation of the industry.

What will be the impact of these policy options on trade?

- The department is seeking feedback on impacts of the proposed policy option ideas on individuals, business and communities that may be affected by a change in policy.
- This feedback will be considered as part of the regulatory impact analysis when drafting the RIS. The purpose of a RIS is to analyse the economic and regulatory costs and benefits of different policy options.

Archived: Wednesday, 22 January 2020 9:42:54 AM

From: Paradise, Jim

Sent: Fri, 27 Sep 2019 09:15:16

To: ^{s. 47F(1)} @livexcouncil.com.au; s. 22(1)(a)(ii)

Cc: s. 22(1)(a)(ii) McEwen, Melissa; s. 22(1)(a)(ii) ; Hutchison, Tina; s. 22(1)(a)(ii)

Subject: 11am Release of a discussion paper on sheep exports to the ME during the northern hemisphere summer [SEC=UNCLASSIFIED]

Sensitivity: Normal

Document 8

Good morning ^{s. 47F(1)} and ^{s. 22(1)(a)}

As recently discuss the department will be publishing the Middle East sheep exports discussion paper today at around 11am. It will be accessible on the department's '[Have your say](#)' webpage after 11am this morning.

As you are aware, the discussion paper is the first stage in the Regulation Impact Statement (RIS) process. The discussion paper proposes four policy option ideas for sheep export to, or through, the Middle East during the northern summer from 2020 onwards. There will be 30 days of public consultation till 28 October 2019 and we look forward to hearing from/engaging with industry and other stakeholders on the potential costs and benefits of each option. We will also welcome proposals of alternative policy options.

If you have any questions or require clarification on the discussion paper or the RIS process please call me on **s. 47F(1)** .

Regards

Jim

[Jim Paradise](#)

A/g Assistant Secretary

Animal Welfare Branch

LIVE ANIMAL EXPORT DIVISION

DEPARTMENT OF AGRICULTURE

Phone: **s. 47F(1)** | Email: jim.paradice@agriculture.gov.au

Mail: GPO Box 858 CANBERRA ACT 2601

Archived: Wednesday, 22 January 2020 9:44:09 AM

From: Animal Welfare Inbox

Sent: Fri, 27 Sep 2019 11:05:46

Subject: Release of Discussion Paper on Middle East Sheep Exports [SEC=UNCLASSIFIED]

Sensitivity: Normal

Document 9

Good morning LEAWAG members,

As mentioned in my recent email to you, the department will be publishing the Middle East sheep exports discussion paper today at around 11 am. It will be accessible on the department's '[Have your say](#)' webpage after 11 am this morning.

As you are aware, the discussion paper is the first stage in the Regulation Impact Statement (RIS) process. The discussion paper proposes four policy option ideas for sheep export to, or through, the Middle East during the northern summer from 2020 onwards. There will be 30 days of public consultation till 28 October 2019 when we will look forward to hearing from stakeholders on the potential costs and benefits of each option. We will also welcome proposals of alternative policy options.

If you have any questions or require clarification on the discussion paper or the RIS process please call me on **s. 47F(1)** .

Regards

Jim

[Jim Paradise](#)

A/g Assistant Secretary

Animal Welfare Branch

LIVE ANIMAL EXPORT DIVISION

DEPARTMENT OF AGRICULTURE

Phone: **s. 47F(1)** | Email: jim.paradice@agriculture.gov.au

Mail: GPO Box 858 CANBERRA ACT 2601

Archived: Tuesday, 29 October 2019 10:39:47 AM

From: s. 47F(1)

Document 10

Sent: Fri, 27 Sep 2019 09:22:55

To: Paradise, Jim

Cc: s. 22(1)(a)(ii); s. 22(1)(a)(ii); McEwen, Melissa; s. 22(1)(a)(ii) Hutchison, Tina; s. 22(1)(a)(ii)

Subject: Re: 11am Release of a discussion paper on sheep exports to the ME during the northern hemisphere summer [SEC=UNCLASSIFIED]

Sensitivity: Normal

\f0Thanks Jim

\f0Appreciate you and the department keeping ALEC informed. We've appreciated it.

\f0Regards

\f0s. 47F(1)

\f0s. 47F(1)

\f0Australian Livestock Exporters Council

\f0s. 47F(1)

\f0 On 27 Sep 2019, at 9:15 am, Paradise, Jim <Jim.Paradice@agriculture.gov.au> wrote:

Good morning ^{s. 47F(1)} and ^{s. 22(1)(a)}

As recently discuss the department will be publishing the Middle East sheep exports discussion paper today at around 11am. It will be accessible on the department's '[Have your say](#)' webpage after 11am this morning.

As you are aware, the discussion paper is the first stage in the Regulation Impact Statement (RIS) process. The discussion paper proposes four policy option ideas for sheep export to, or through, the Middle East during the northern summer from 2020 onwards. There will be 30 days of public consultation till 28 October 2019 and we look forward to hearing from/engaging with industry and other stakeholders on the potential costs and benefits of each option. We will also welcome proposals of alternative policy options.

If you have any questions or require clarification on the discussion paper or the RIS process please call me on s. 47F(1) .

Regards

Jim

[Jim Paradise](#)

A/g Assistant Secretary

Animal Welfare Branch

LIVE ANIMAL EXPORT DIVISION

DEPARTMENT OF AGRICULTURE

Phone: s. 47F(1) | Email: jim.paradice@agriculture.gov.au

Mail: GPO Box 858 CANBERRA ACT 2601

\f0----- IMPORTANT - This email and any attachments have been issued by the Australian Government Department of Agriculture. The material transmitted is for the use of the intended recipient only and may contain confidential, legally privileged, copyright or personal information. You should not copy, use or disclose it without authorisation from the Department. It is your responsibility to check any attachments for viruses and defects before opening or forwarding them. If you are not an intended recipient, please contact the sender of this email at once by return email and then delete both messages. Unintended recipients must not copy, use, disclose, rely on or publish this email or attachments. The Department of Agriculture is not liable for any loss or damage resulting from unauthorised use or dissemination of, or any reliance on, this email or attachments. If you have received this e-mail as part of a valid mailing list and no longer want to receive a message such as this one, advise the sender by return e-mail accordingly. This notice should not be deleted or altered -----