



Australian Government

FILL IN THE BLANKS

Match the image to the text and use the words in **bold** to fill in the blanks.

Spongy moths attack more than 1,000 types of plants including trees. Their caterpillars can eat all the leaves off trees, which can kill the trees.

Xylella fastidiosa (zy-LEL-lah fas-tid-ee-OH-sah) is a type of bacteria that makes leaves turn brown and die. It can infect and kill more than 550 types of plants, including many food crops and trees.

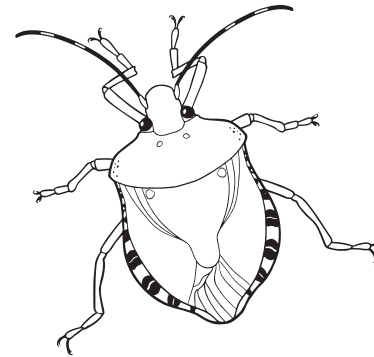
Brown marmorated stink bug is a hitchhiker pest that likes to hide in dark places for the winter. This includes inside things we buy from overseas, like cars and trucks! The bugs feed on lots of different plants causing the leaves to drop off and unripe fruit to fall to the ground. They can be a stinky pest in large numbers.

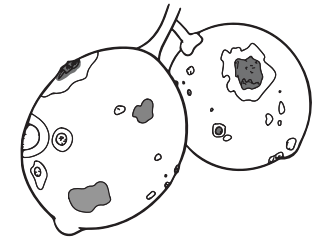


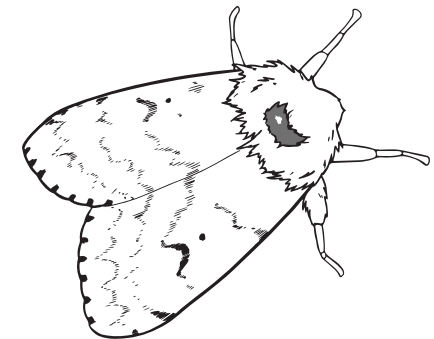
Paterson's curse, also known as Salvation Jane, is a weed that was brought to Australia in the 1850s. It has purple flowers and can cause liver damage in farm animals that eat it, such as horses and pigs.

Citrus canker makes citrus trees like orange and mandarin trees sick. It causes rough brown spots on fruits and leaves, which can sometimes all fall off.









BE A JUNIOR BIOSECURITY OFFICER

Biosecurity is how we protect our plants, animals, food and nature. Visit www.agriculture.gov.au/JBO to find out more.



Learn more

