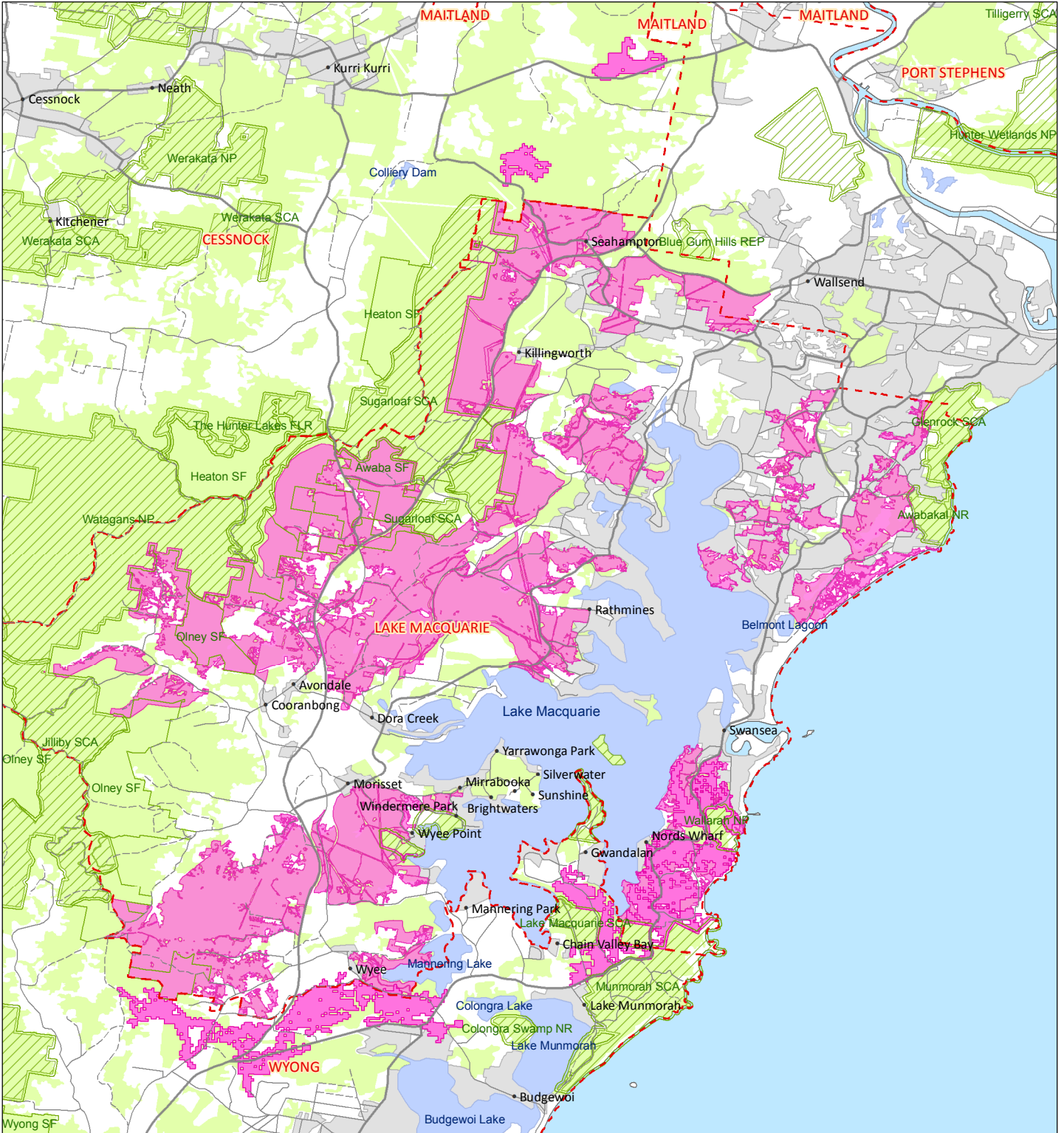


Map 4a: Important habitat for black-eyed susan - central coast region



INDICATIVE MAP ONLY: For the latest departmental information, please refer to the Protected Matters Search Tool at www.environment.gov.au/epbc/index.html



Australian Government

**Department of Sustainability, Environment,
Water, Population and Communities**

Produced by:
Environmental Resources Information Network (ERIN)
COPYRIGHT Commonwealth of Australia, 2011

Contextual data sources:
DEWHA (2006), Collaborative Australian Protected Areas Database
Geoscience Australia (2006), Geodata Topo 250K Topographic Data

Legend

- Important Areas for *T.juncea**
- Local Govt Area Boundaries
- Cities & Towns
- Roads
- Conservation Areas
- Forestry & Indigenous Lands
- Native Forest & Woodland
- Lakes & Watercourses

*Please note: Important areas for *T. juncea* compiled by Lake Macquarie City Council and species experts from the following sources:
- Driscoll, C. (2009). *Tetratheca juncea* modelled habitat suitability & fragment size
- Driscoll, C. (2011). *Tetratheca juncea* habitat suitability modelling. Unpublished PhD research. University of Newcastle
- LMCC (2009). Native vegetation & corridors mapping
- Payne, R. (2000). *Tetratheca juncea* conservation management plan

CAVEAT: The information presented in this map has been provided by a range of groups and agencies. While every effort has been made to ensure accuracy and completeness, no guarantee is given, nor responsibility taken by the Commonwealth for errors or omissions, and the Commonwealth does not accept responsibility in respect of any information or advice given in relation to, or as a consequence of, anything containing herein.
INDICATIVE MAP ONLY: This map has been compiled from datasets with a range of geographic scales and quality. Species or ecological community distributions are indicative only and not to be used for local assessment. Local knowledge and information should be sought to confirm the presence of the species, or species habitat, at the location of interest.