

References and further reading

- AUSLIG (1990). Refers to data derived from a digital version of the two maps which were published in the Atlas of Australian Resources, Third Series, Volume 6, Vegetation, AUSLIG, Canberra.
- Australian Biological Resources Study, personal communication.
- Australian Bureau of Statistics (1995a). NFI contract for input-output data for 1989–90, national accounting aggregates for the forestry and logging industry.
- Australian Bureau of Statistics (1995b). NFI contract for data from input-output tables for 1989–90.
- Australian Bureau of Statistics (1995c). NFI contract for employment in forest sector.
- Australian Bureau of Statistics (1995d). NFI contract for residential building commencements.
- Australian Bureau of Statistics (1995e). NFI contract for wood and woodchip data.
- Australian Bureau of Statistics (1995f). NFI contract for business register data.
- Australian Bureau of Statistics (1996). NFI contract for wages data.
- Australian Bureau of Statistics (1997). NFI contract for constant price estimates.
- Australian Bureau of Statistics (1998a). NFI contract for business register data.
- Australian Bureau of Statistics (1998b). NFI contract for ASIC 263 data up to 1991–92 and all ANZSIC 233 data from 1992–93.
- Australian Bureau of Statistics (1998c). NFI contract for industry gross product factor cost at 1989–90 dollars, ANZSIC 231/232/233.
- Australian Bureau of Statistics (1998d). NFI contract for data from national accounts 1985–96, manufacturing industry turnover at average 1989–90 prices, ANZSIC 231/232/233.
- Australian Bureau of Statistics (1998e). NFI contract for national accounts imports and exports price deflators.
- Australian Bureau of Statistics (1998f). NFI contract for national accounts imports and exports deflators.
- Australian Bureau of Statistics (1998g). NFI contract for producer price indices, MUM1, 6411.0 and APM1, 6412.0.
- Australian Bureau of Statistics (1998h). NFI contract for wages and salaries data, catalogue number 6248.0.
- Australian Forest Products Industry Review (1996). Ausnewz Pulp and Paper Intelligence Service, Hobart.
- Australian Forest Product Statistics (1997).
- Australian Forest Resources (1976–1991).
- Australian Taxation Office (1994a). NFI contract for data on material wages and salaries.
- Australian Taxation Office (1994b). NFI contract for depreciation data on wood industries.
- Australian Taxation Office (1994c). NFI contract for data on material repairs and maintenance.
- Commonwealth of Australia (1996). State of the Environment Report. CSIRO Publishing, Collingwood.
- Commonwealth of Australia (1997). Australia's First Approximation Report for the Montreal Process. Montreal Process Implementation Group, Canberra.
- Compendium of Australian Forest Products Statistics (1935–36 to 1966–67) (1969). Compiled by D. Wilson, Forestry and Timber Bureau, Canberra.
- Cornish, P.M. (1989). The effects of radiata pine plantation establishment and management on water yields and water quality: a review. Forestry Commission of NSW (Technical Paper Number 49).
- Environment Australia, personal communication.
- Forestry Commission (1994). State of the Forests Report. Forestry Commission, Tasmania.
- Forest Resources (1975).
- Fryer, J.H., Davey, S.M. and Hoare, J.R.L. (1994). Forest and Wood Products Compendium of Australian Research-in-progress. Forest and Wood Products Research and Development Corporation and Bureau of Resource Sciences, Canberra.
- Montreal First Approximation Report (1997). See Commonwealth of Australia (1997).
- Nandakumar, N. and Mein, R.G. (1993). Analysis of paired catchment data to

- determine the hydrologic effects of change in vegetative cover on yield. Final Technical Report for Land and Water Resources Research and Development Corporation and Department of Conservation and Natural Resources (Vic). Department of Civil Engineering, Monash University.
- National Forest Inventory (1997). Much data in this report has been compiled from unpublished databases of State, Territory and Commonwealth agencies, plus some private sources. The currency of each database is nearly always independent of others, and may itself contain elements of differing currency. To document the history of each of these kinds of table would have made the present report almost unreadable because of the detail. Readers should thus use caution in interpreting currency of information labelled as source National Forest Inventory (1997). If currency is critical to a reader, please contact the Manager, National Forest Inventory, for details.
- National Greenhouse Gas Inventory Committee (1997), Department of the Environment Sport and Territories, Canberra.
- National Plantation Inventory (1997). National Forest Inventory and Bureau of Resource Sciences, Canberra.
- New South Wales National Parks and Wildlife Service (1994a). Fauna of north-east NSW forests, North East Biodiversity Study Report Number 3. Unpublished report, NSW National Parks and Wildlife Service, Hurstville.
- New South Wales National Parks and Wildlife Service (1994b). Flora of NSW forests, North East Biodiversity Study Report Number 4. Unpublished report, NSW National Parks and Wildlife Service, Hurstville.
- O'Loughlin, E.M. and Dunin, F.X. (eds) (1993). Water issues in forests today. Papers presented at the International Symposium on Forest Hydrology, Canberra. *Journal of Hydrology*, Volume 150, Numbers 2-4.
- O'Shaughnessy, P.J. and Jayasuriya, M.D.A. (1991). Water supply catchment hydrology research, status report 1991. Melbourne Water, Melbourne.
- Pulp and Paper Manufacturers Federation of Australia (1995), personal communication.
- Pulp and Paper Manufacturers' Federation of Australia (1998), personal communication.
- Quarterly Forest Products Statistics and equivalents. This is a shorthand reference to a series of publications which together reported on a range of forestry statistics: Forestry and Timber Bureau Annual Reports (1966 to 1974); Forest Resources (1975); Australian Forest Resources (1976 to 1991); Quarterly Forest Products Statistics (1992 to 1996); and Australian Forest Products Statistics (1997-).
- Royal Australasian Ornithologists Union (1995), personal communication.
- Specht, R.L., Specht, A., Whelan, M.B., and Hegarty, E. (1995). 'Conservation Atlas of Plant Communities in Australia'. Centre for Coastal Management and Southern Cross University Press, Lismore.
- Taylor, Peter (1994). Growing up – Forestry in Queensland. Allen and Unwin, St Leonards, New South Wales.
- Turner, J. and Lambert, M.J. (1997). Expenditure on forestry and forest products research in Australia. *Australian Forestry*, Volume 60, Number 1, pp 1-6.
- Vertessy, R., Watson, E., O'Sullivan, S., Davis, S., Campbell, R., Benyon, R. and Haydon, S. (1998). Predicting water yield from mountain ash forest catchments. Cooperative Research Centre for Catchment Hydrology. Industry Report, Report Number 98/4.
- Williams, J.E. and Gill, A.M. (1995). The impact of fire regimes on native forests in eastern New South Wales. National Parks and Wildlife Service, New South Wales, Environmental Heritage Series Number 2, National Parks and Wildlife Service, Hurstville.
- Worksafe Australia (1995). Estimates of National Occupational Health and Safety Statistics, Australia, 1992-1993. Australian Government Publishing Service, Canberra; and Compendium of Workers' Compensation Statistics, Australia, 1992-93. Statistics Unit, Worksafe Australia, Australian Government Publishing Service, Canberra.
- Year Book Australia (1997). Australian Bureau of Statistics, Canberra.

Acknowledgements

The production of this report has involved many staff in the forestry and conservation agencies of the States, Territories and Commonwealth of Australia. Without their goodwill and support, the very large task of collating, preparing and checking data, text, tables, figures and maps would not have been possible.

The following people are known to have assisted greatly with the production of this State of the Forests Report and their contributions are here acknowledged:

ACT: Dave Jamieson, Bill Logan

NSW: Ken Moxon, Tony O'Hara, Rod Squires, State forests NSW – GIS staff, NSW National Parks and Wildlife Service staff

NT: Peter Brocklehurst, David Howe, Sue van Cuylenberg

Qld: Chris Bragg, Rosalie Buck, Mark Cant, Dick Clarkson, Peter Holzworth, Keith Jennings, Dave Jermyn, Dave Mannes, Phillip Norman, Jane Seibuhr, David West, Christian Witte, Peter Young

SA: Lee Heard, Roger Pfiztner, John Pratt, Jeff Simmons, Felicity Smith

Tas: Peter Bosworth, Mick Brown, Steve Davis, Steve Harris, John Hickey, Julie Jones, Anni McCuaig, Martin Stone, Penny Wells

Vic: Rod Anderson, Chris Ashe, Brian Doolan, John Drohan, Peter Fagg, Peter Ford, Rod Gowans, Graeme Hollingsworth, Dave Holmes, Bruce Kilgour, Richard Loyn, Andrew Maclean, Ken Mawdsley, Mike Niven, David Parkes, Ross Penny, Ross Potter, Anna Siora, Michael Sutton, Wendy Taylor

WA: Pat Collins, Paul Jones, Frank McKinnell

Commonwealth of Australia : Alice Bateup, Elizabeth Best, Janine Bradley, Sean Cadman, Gary Dolman, Jim Donaldson, Mark Edwards, Susan Hafner, Tracy Hesketh, Roger Hnatiuk, Jamie Hoare, Rod Holesgrove, Claire Howell, Ulla Karjalainen, Sally Kaufmann, Glen Kile, Debbie Lamb, Richard Lucas, Martin Mutendeudzi, Alicia Oke, Ken Old, Tony Press, Alison Pritchard, Antti Roppola, Graham Rudd, Peter Thomas, Phillip Tickle, Ron Wardman, Mellissa Wood, Peter Yuile

Much of what is reported here is summarised for the first time through the State of the Forests Report process, although significant parts of the State of the Forests Report information at the national level were published for the first time in Australia's First Approximation Report for the Montreal Process in 1997.

The assistance provided by the JANIS Steering Committee and Technical Advisory Committee and the National Forest Inventory Steering Committee is also sincerely acknowledged. Their professional guidance and support significantly improved the quality of the document.

The Management Team of the National Forest Inventory and staff of the Forests Section, Bureau of Rural Sciences, are also thanked for their role in synthesising and presenting the information and coordinating the entire process. The assistance of the Corporate Communications Section, Bureau of Resource Sciences, in preparing the document for publication is acknowledged.

Major national data compilation and drafting of the first versions of text were done by Sally Kaufmann, Philip Tickle, Ron Wardman, Debbie Lamb, Antti Roppola, Martin Mutendeudzi and Alicia Oke. Draft text was provided by John Dargavel (history), Pat O'Shaunessy (water) and Rob Whelan (fire). Final drafts were prepared by Alastair Sarre and a Drafting Group representing the Standing Committee on Conservation, the Standing Committee on Forestry and the Commonwealth.

Summaries of Key Data

Commonwealth of Australia

Population 1996 (ABS 1998)		18 311 000
Total area		768 230 000 ha
Forested land		156 877 000 ha
Native forest		
multiple-use forest		13 351 000 ha
conservation reserve		17 580 000 ha
private		42 018 000 ha
leasehold		66 103 000 ha
other crown land		15 597 000 ha
Plantations (1995)		
softwood		883 980 m ³
hardwood		158 570 m ³
Biodiversity		
vertebrates	mammals	217
	birds	561
	reptiles	319
	amphibians	126
	fish	16
	rare / threatened	81
higher plants	rare / threatened	13 622
		n/d
Forest expenditure (public, 1994–95)		
conservation		\$297 467 000
forestry		\$339 148 000
Revenue (1994–95)		\$440 897 000
Sustainable yield, multiple-use forests (1994–95)		2 714 000 m ³
Harvest volume, multiple-use forests (1994–95)		2 663 000 m ³
Harvest area, native multiple-use forests		110 310 ha
Regional forest agreements		Completed: East Gippsland, Tasmania, Central Highlands In progress: Western Australia (1), New South Wales (4), Queensland (1), Victoria (3)

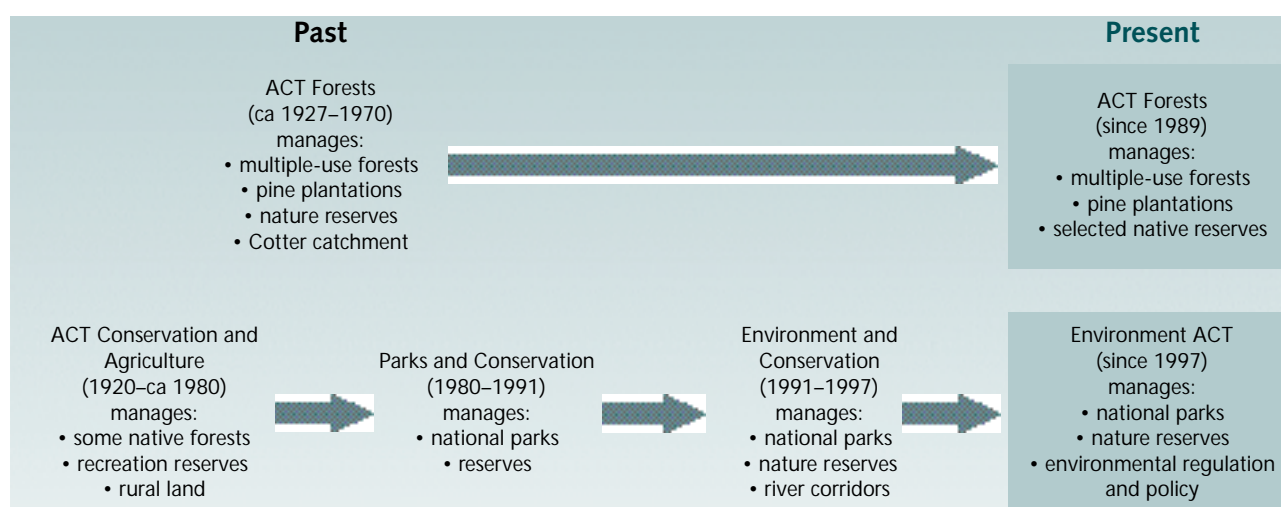
n/d - no data

Australian Capital Territory

Population 1996 (ABS 1998)	308 000
Total area	240 000 ha
Forested land	135 000 ha
Native forest	
multiple-use forest	5000 ha
conservation reserve	93 000 ha
private	7000 ha
leasehold	13 000 ha
other crown land	2000 ha
Plantations (1995)	
softwood	74 800 ha
hardwood	0 ha
Biodiversity	
vertebrates	
mammals	n/d
birds	n/d
reptiles	n/d
amphibians	n/d
fish	n/d
rare / threatened	n/d
higher plants	
rare / threatened	n/d
Forest expenditure (public, 1994–95)	
conservation	\$ n/d
forestry	\$6 538 000
Revenue	n/d
Sustainable yield, multiple-use forests (1994–95)	n/a
Harvest volume, multiple-use forests (1994–95)	n/a
Harvest area, native forests	0 ha
Regional forest agreements	n/a

n/d - no data

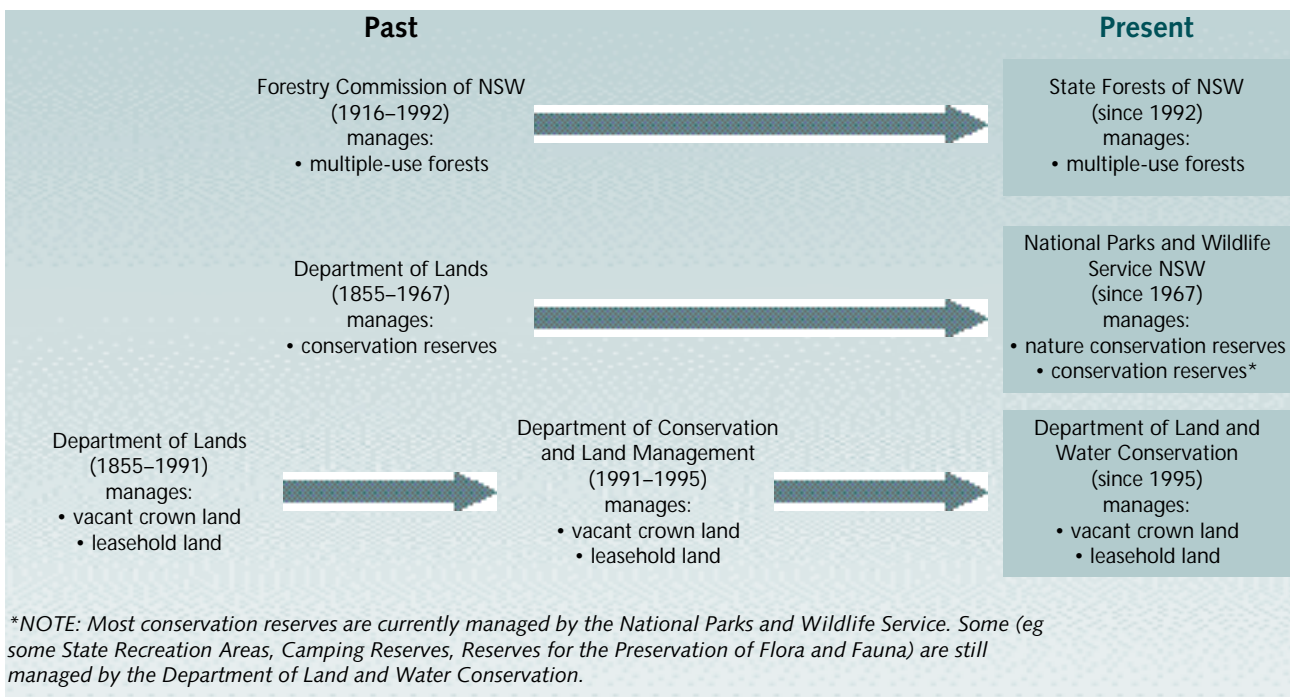
n/a - not applicable



New South Wales

Population 1996 (ABS 1998)	6 203 900
Total area	80 160 000 ha
Forested land	21 057 000 ha
Native forest	
multiple-use forests	3 095 000 ha
conservation reserve	3 060 000 ha
private	8 046 000 ha
leasehold	5 966 000 ha
other crown land	605 000 ha
Plantations (1995)	
softwood	266 900 ha
hardwood	29 200 ha
Biodiversity numbers	
vertebrates	
mammals	96
birds	281
reptiles	73
amphibians	54
fish	0
rare / threatened	7
higher plants	
rare / threatened	n/d
Forest expenditure (public, 1994–95)	
conservation	\$151 029 000
forestry	\$108 531 000
Revenue (1994–95)	\$102 205 000
Sustainable yield, multiple-use forests (1994–95)	801 000 m ³
Harvest volume, multiple-use forests (1994–95)	781 000 m ³
Harvest area, multiple-use forests (1993–94)	37 500 ha
Regional forest agreements	4 in progress (July, 1998)

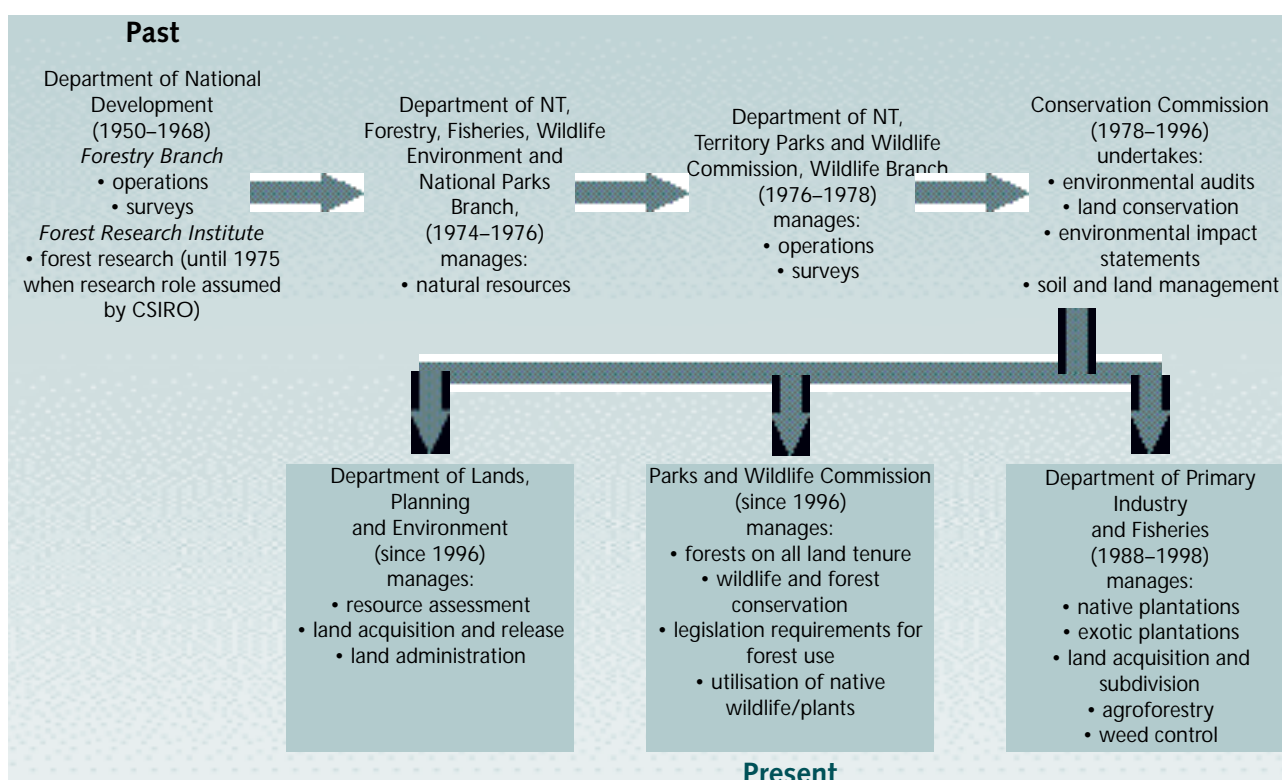
n/d - no data



Northern Territory

Population 1996 (ABS 1998)	181 900
Total area	134 620 000 ha
Forested land	35 389 000 ha
Native forest	
multiple use forests	0 ha
conservation reserve	2 709 000 ha
private	11 187 000 ha
leasehold	20 236 000 ha
other crown land	258 000 ha
Plantations (1995)	
softwood	5500 ha
hardwood	64 ha
Biodiversity numbers	
vertebrates	
mammals	87
birds	198
reptiles	134
amphibians	30
fish	0
rare / threatened	4
higher plants	1691
rare / threatened	n/d
Forest expenditure (public 1994–95)	
conservation	\$35 370 000
forestry	n/a
Revenue (1994–95)	n/a
Sustainable yield, multiple use forests (1994–95)	n/a
Harvest volume, multiple use forests (1994–95)	n/a
Harvest area, multiple use forests (1993–94)	0 ha
Regional forest agreements	n/a

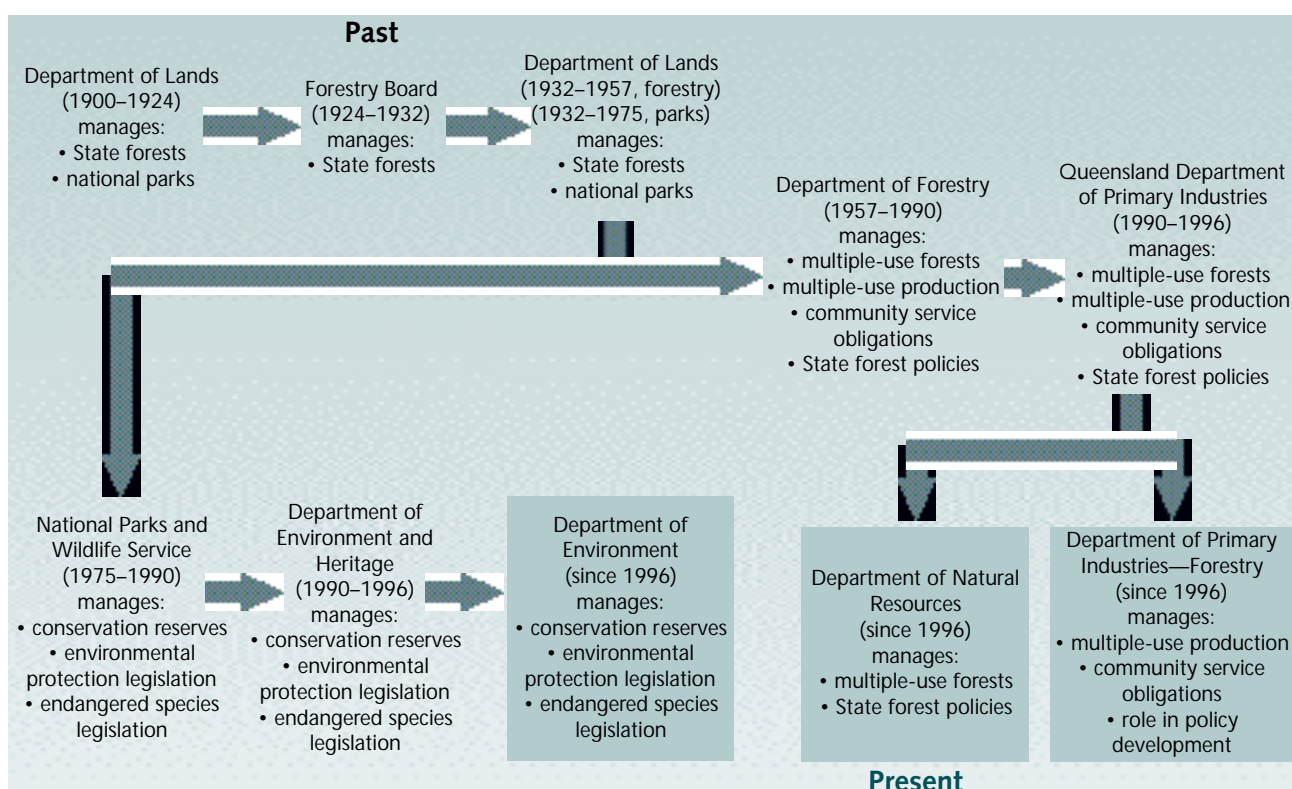
n/d - no data
n/a - not applicable



Queensland

Population 1996 (ABS 1998)		3 339 100
Total area		172 720 000 ha
Forested land		49 226 000 ha
Native forest		
multiple-use forests		3 983 000 ha
conservation reserve		2 870 000 ha
private		17 111 000 ha
leasehold		23 996 000 ha
other crown land		1 051 000 ha
Plantations (1995)		
softwood		185 700 ha
hardwood		1600 ha
Biodiversity numbers		
vertebrates	mammals	104
	birds	303
	reptiles	122
	amphibians	49
	fish	4
	rare / threatened	76
higher plants	rare / threatened	7830
		n/d
Forest expenditure (public, 1994–95)		
conservation		\$22 550 000
forestry		\$29 764 000
Revenue (1994–95)		\$70 183 000
Sustainable yield, multiple-use forests (1994–95)		112 000 m ³
Harvest volume, multiple-use forests (1994–95)		111 000 m ³
Harvest area, multiple-use forests (1993–94)		53 196 ha
Regional forest agreements		south east Qld in progress (April, 1998)

n/d - no data

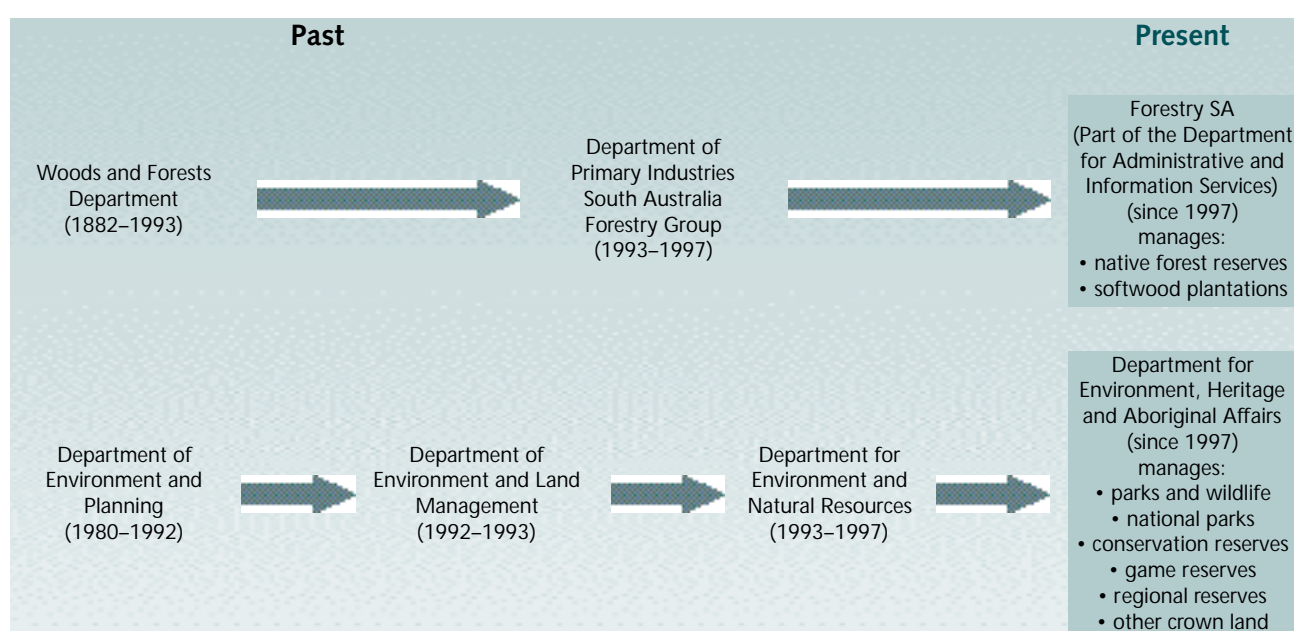


South Australia

Population 1996 (ABS 1998)		1 474 400
Total area		98 400 000 ha
Forested land		5 602 000 ha
Native forest		
multiple-use forests		27 000 ha
conservation reserve		1 252 000 ha
private		2 327 000 ha
leasehold		1 866 000 ha
other crown land		12 000 ha
Plantations (1995)		
softwood		104 800 ha
hardwood		1700 ha
Biodiversity numbers		
vertebrates	mammals	n/d
	birds	n/d
	reptiles	n/d
	amphibians	n/d
	fish	n/d
	rare / threatened	n/d
	higher plants	n/d
	rare / threatened	n/d
Forest expenditure (public, 1994–95)		
conservation		\$14 000 000
forestry		\$171 000
Revenue (1994–95)		\$41 760 000
Sustainable yield, multiple-use forests (1994–95)		n/a
Harvest volume, multiple-use forests (1994–95)		n/a
Harvest area, multiple-use forests (1993–94)		0 ha
Regional forest agreements		n/a

n/d - no data

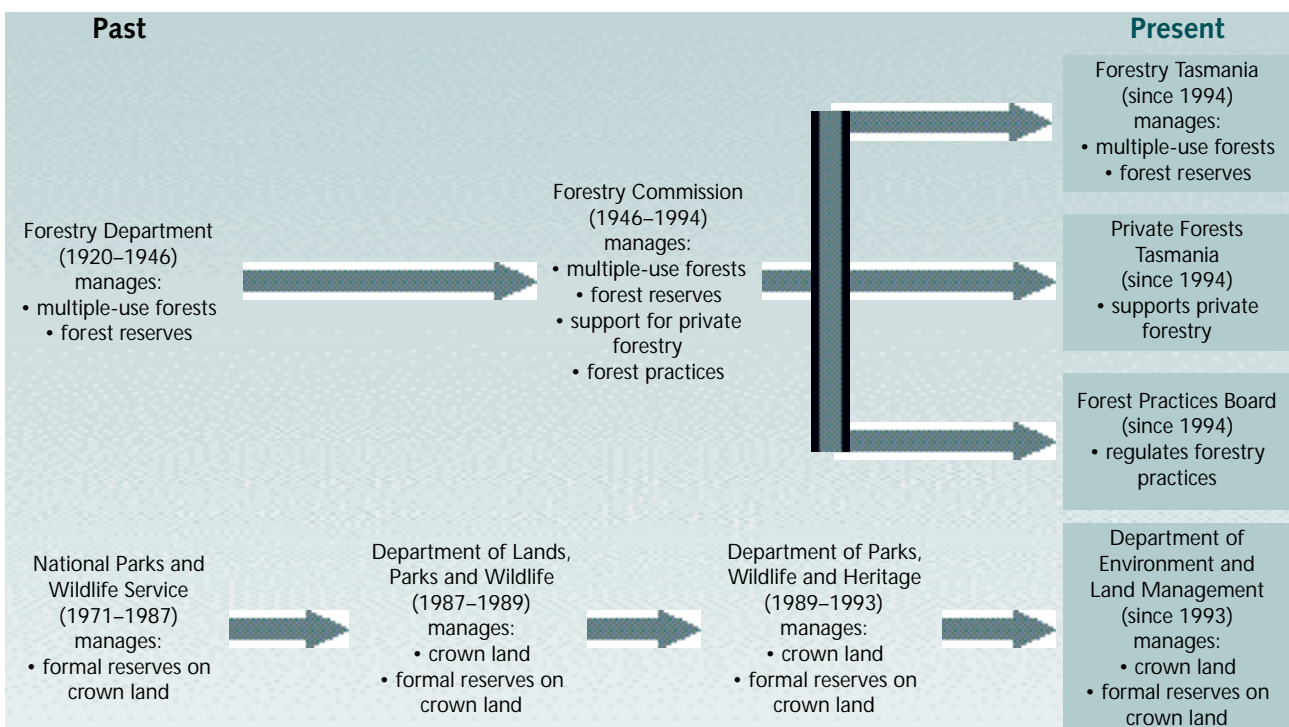
n/a - not applicable



Tasmania

Population 1996 (ABS 1998)		474 600
Total area		6 780 000 ha
Forested land		3 038 000 ha
Native forest		
multiple-use forests		1 285 000 ha
conservation reserve		523 000 ha
private		801 000 ha
leasehold		0 ha
other crown land		296 000 ha
Plantations (1995)		
softwood		80 900 ha
hardwood		58 900 ha
Biodiversity numbers		
vertebrates	mammals	27
	birds	77
	reptiles	14
	amphibians	7
	fish	0
	rare / threatened	4
higher plants		1043
	rare / threatened	n/d
Forest expenditure (public, 1994–95)		
conservation		\$22 297 000
forestry		\$66 269 000
Revenue (1994–95)		\$48 682 000
Sustainable yield, multiple-use forests (1994–95)		300 000 m ³
Harvest volume, multiple-use forests (1994–94)		309 000 m ³
Harvest area, multiple-use forests (1993–94)		5600 ha
Regional forest agreements		Completed, 1997

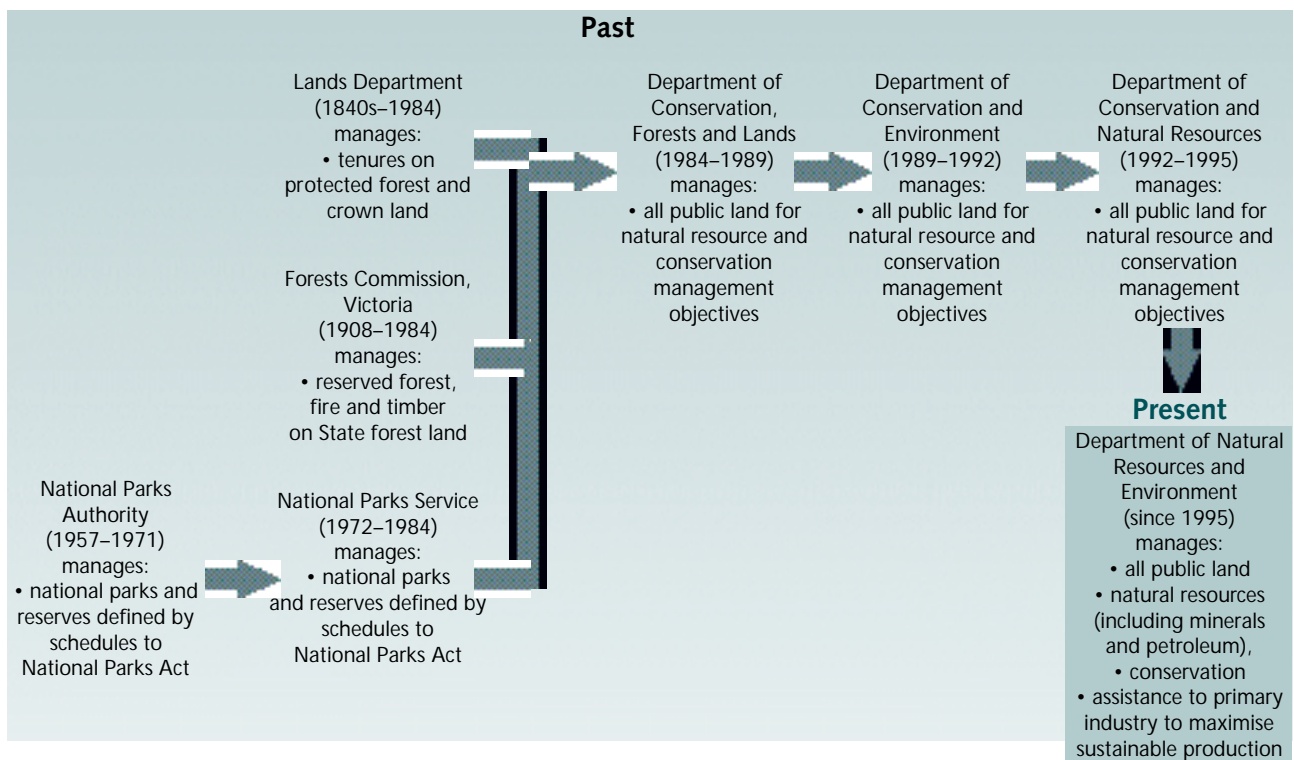
n/d - no data



Victoria

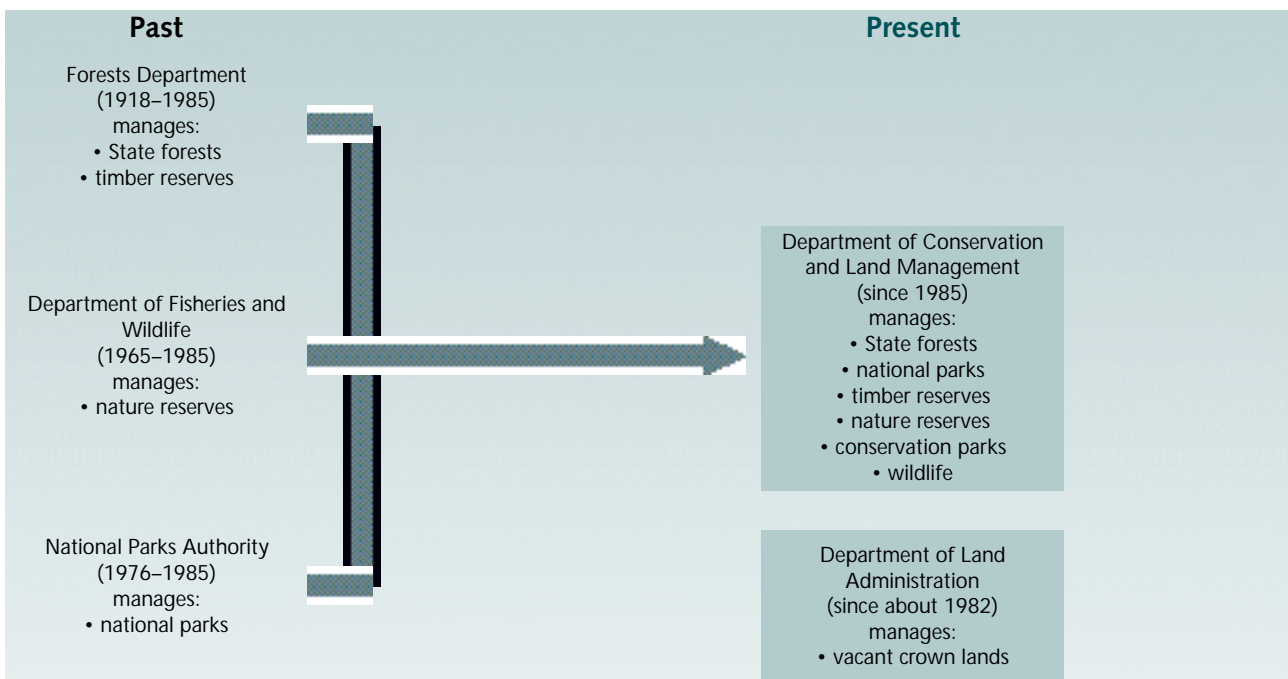
Population 1996 (ABS 1998)		4 560 800
Total area		22 760 000 ha
Forested land		7 501 000 ha
Native forest		
multiple-use forests		3 346 000 ha
conservation reserve		2 710 000 ha
private leasehold		1 038 000 ha
other crown land		0 ha
Plantations (1995 (1993, public))		
softwood		216 600 ha
hardwood		18 400 ha
Biodiversity numbers		
vertebrates	mammals	94
	birds	253
	reptiles	102
	amphibians	36
	fish	0
	rare / threatened	9
higher plants	rare / threatened	2959
		n/d
Forest expenditure (public, 1994–95)		
conservation		\$30 925 000
forestry		\$67 369 000
Revenue (1994–95)		\$80 353 000
Sustainable yield, multiple-use forests (1994–95)		743 000 m ³
Harvest volume, multiple-use forests (1994–95)		664 000 m ³
Harvest area, multiple-use forests (1993–94)		7000 ha
Regional forest agreements		East Gippsland, 1997; Central Highlands, 1998; 3 more remaining as at July, 1998

n/d - no data

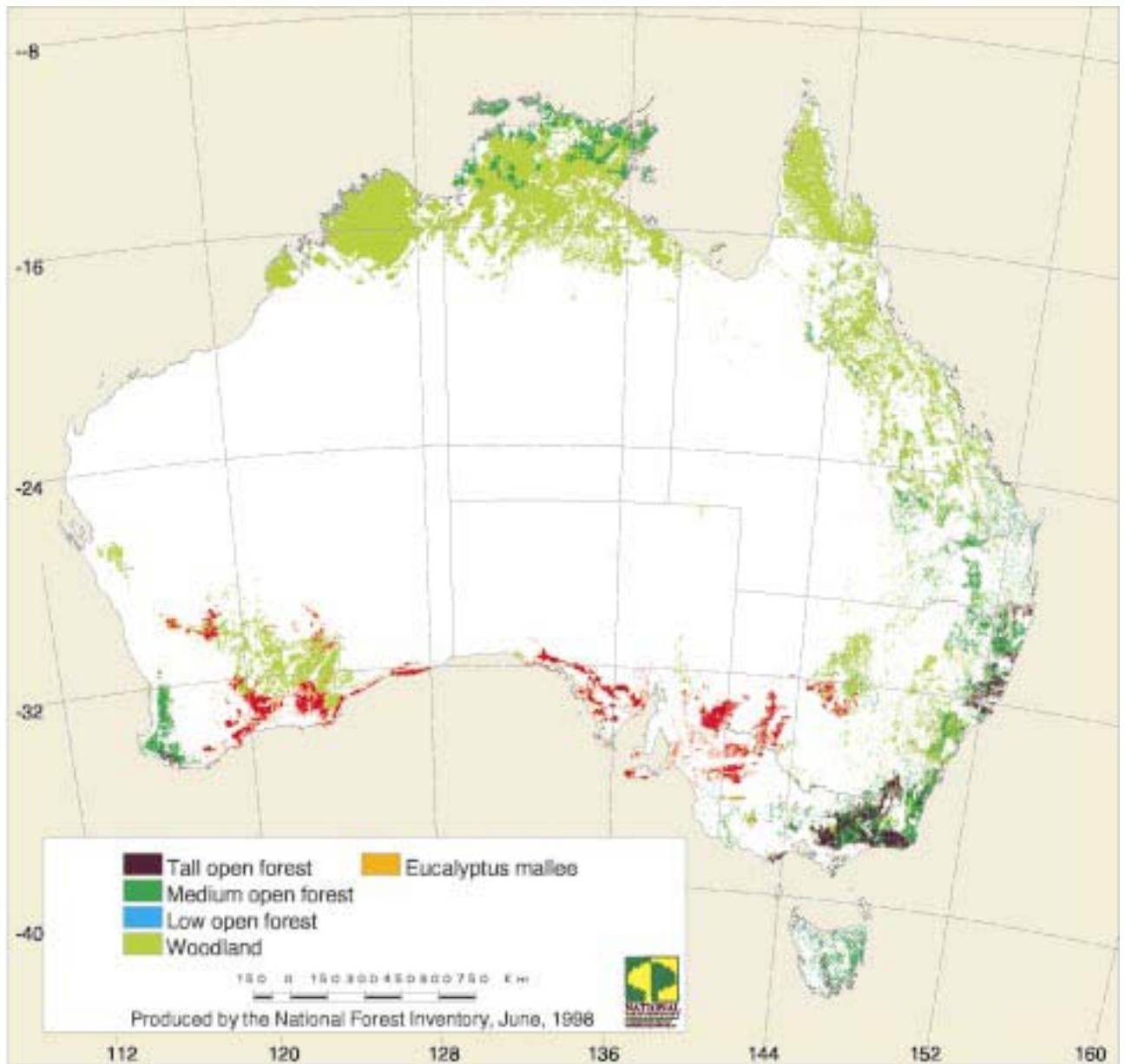


Western Australia

Population 1996 (ABS 1998)		1 765 700
Total area		252 550 000 ha
Forested land		34 930 000 ha
Native forest		
multiple-use forests		1 612 000 ha
conservation reserve		4 364 000 ha
private		1 502 000 ha
leasehold		14 025 000 ha
other crown land		13 206 000 ha
Plantations (1995)		
softwood		88 900 ha
hardwood		45 100 ha
Biodiversity numbers		
vertebrates	mammals	29
	birds	150
	reptiles	45
	amphibians	15
	fish	12
	rare / threatened	9
	higher plants	2639
	rare / threatened	319
Forest expenditure (public, 1994–95)		
conservation (forests)		\$16 837 000
forestry		\$53 190 000
Revenue (1994–95)		\$97 714 000
Sawlog sustainable yield, multiple-use forests (1994–95)		758 000 m ³
Sawlog harvest volume, multiple-use forests (1994–95)		689 000 m ³
Harvest area, multiple-use forests (1993–94)		15 540 ha
Regional forest agreements		Estimated completion August 1998



Maps



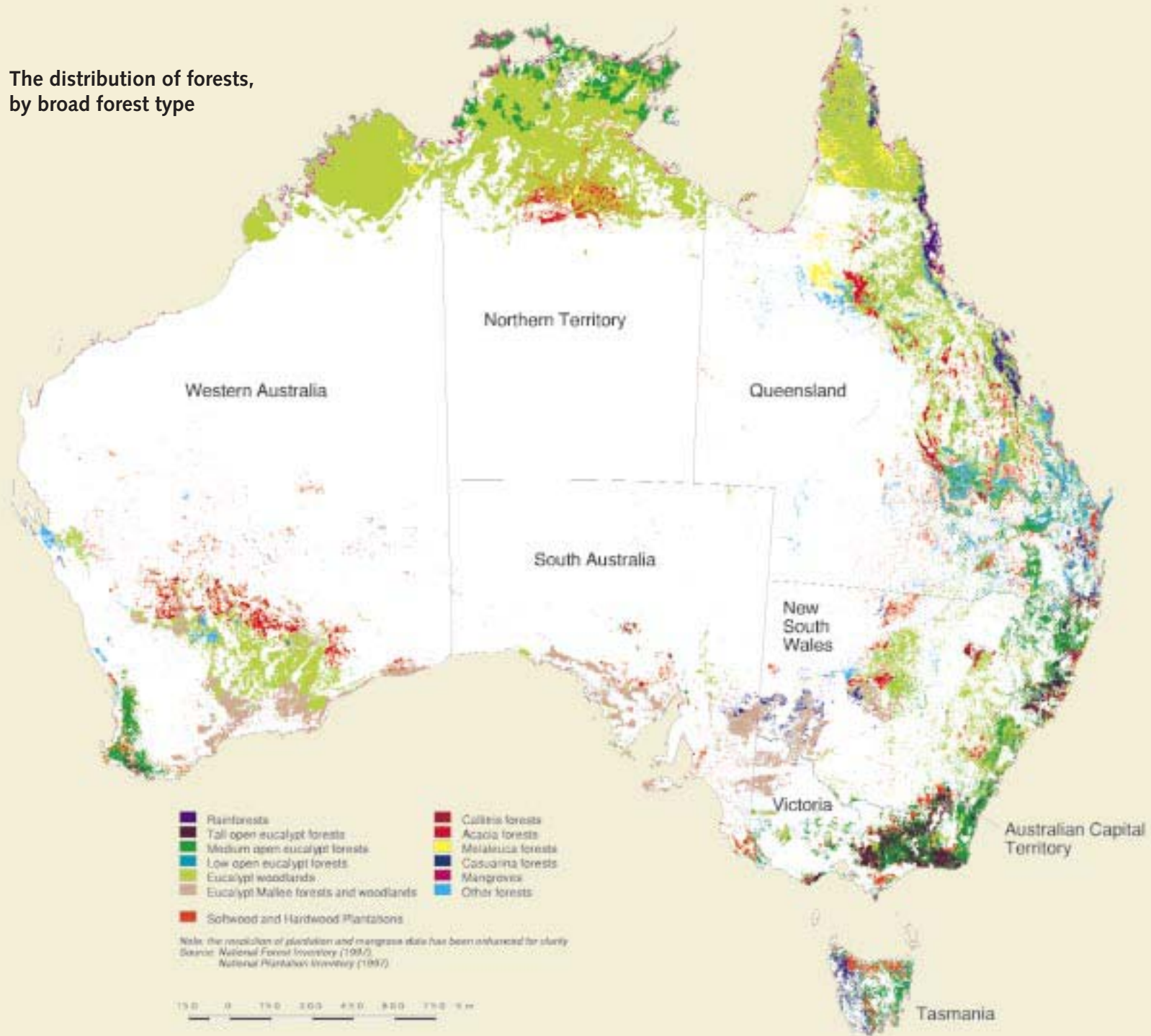
Map 1: The distribution of forests, by crown cover density

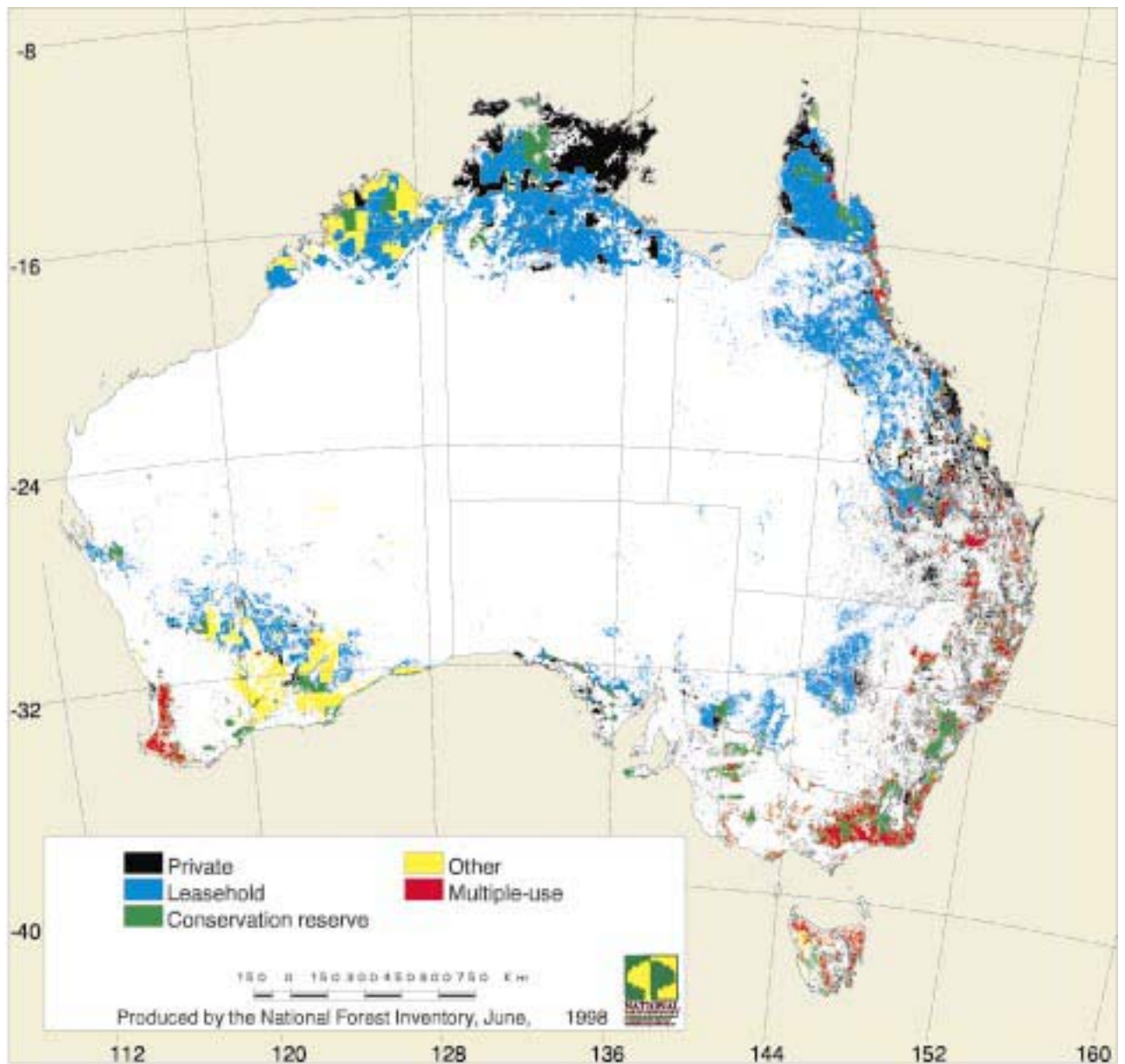
Sources:

Distribution of forests: National Forest Inventory (1997);

Rainfall: Derived from ESOCLIM by National Forest Inventory (1997).

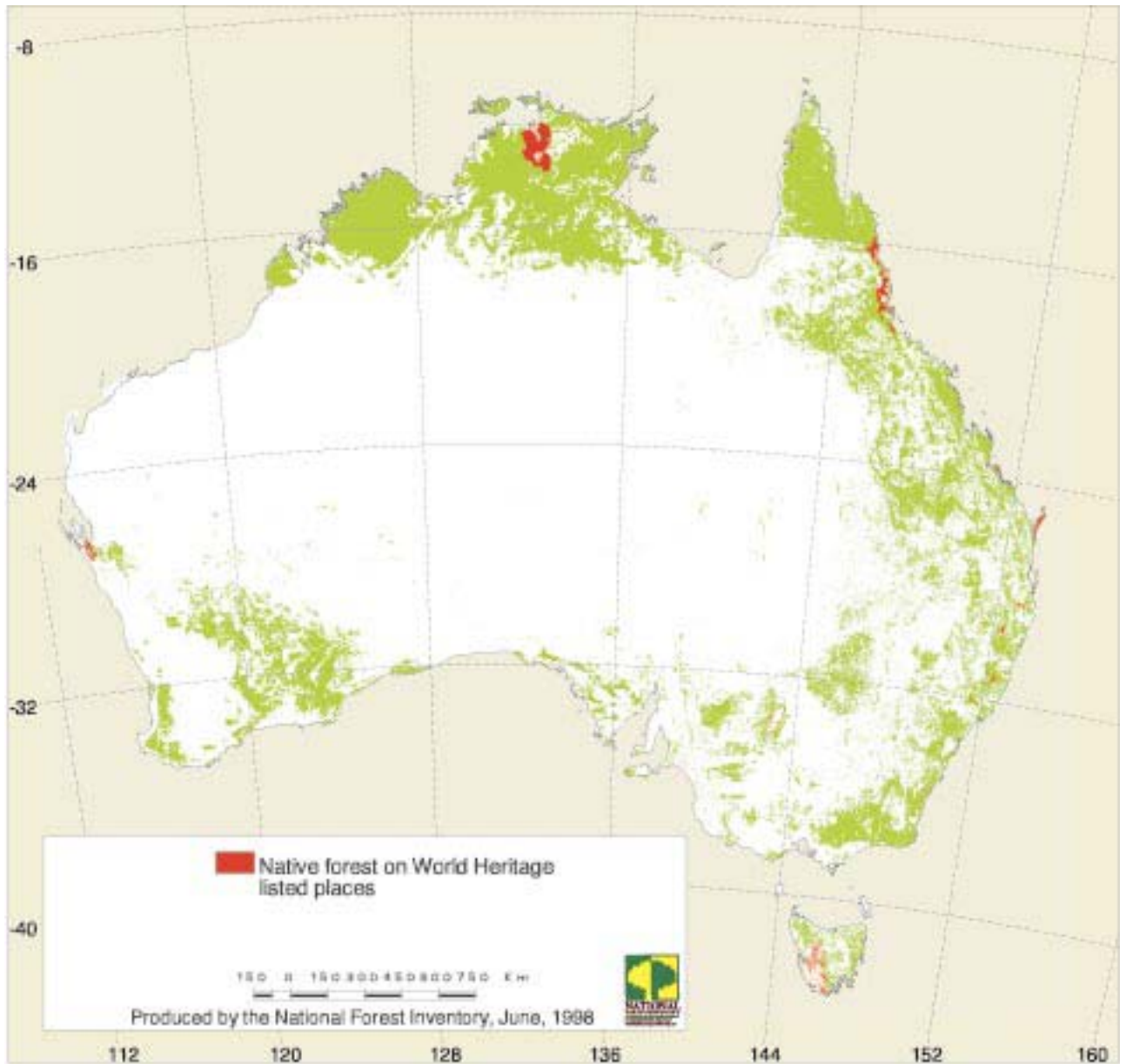
Map 2: The distribution of forests, by broad forest type





Map 3: Native forest, by tenure classes

Source: National Forest Inventory (1997).

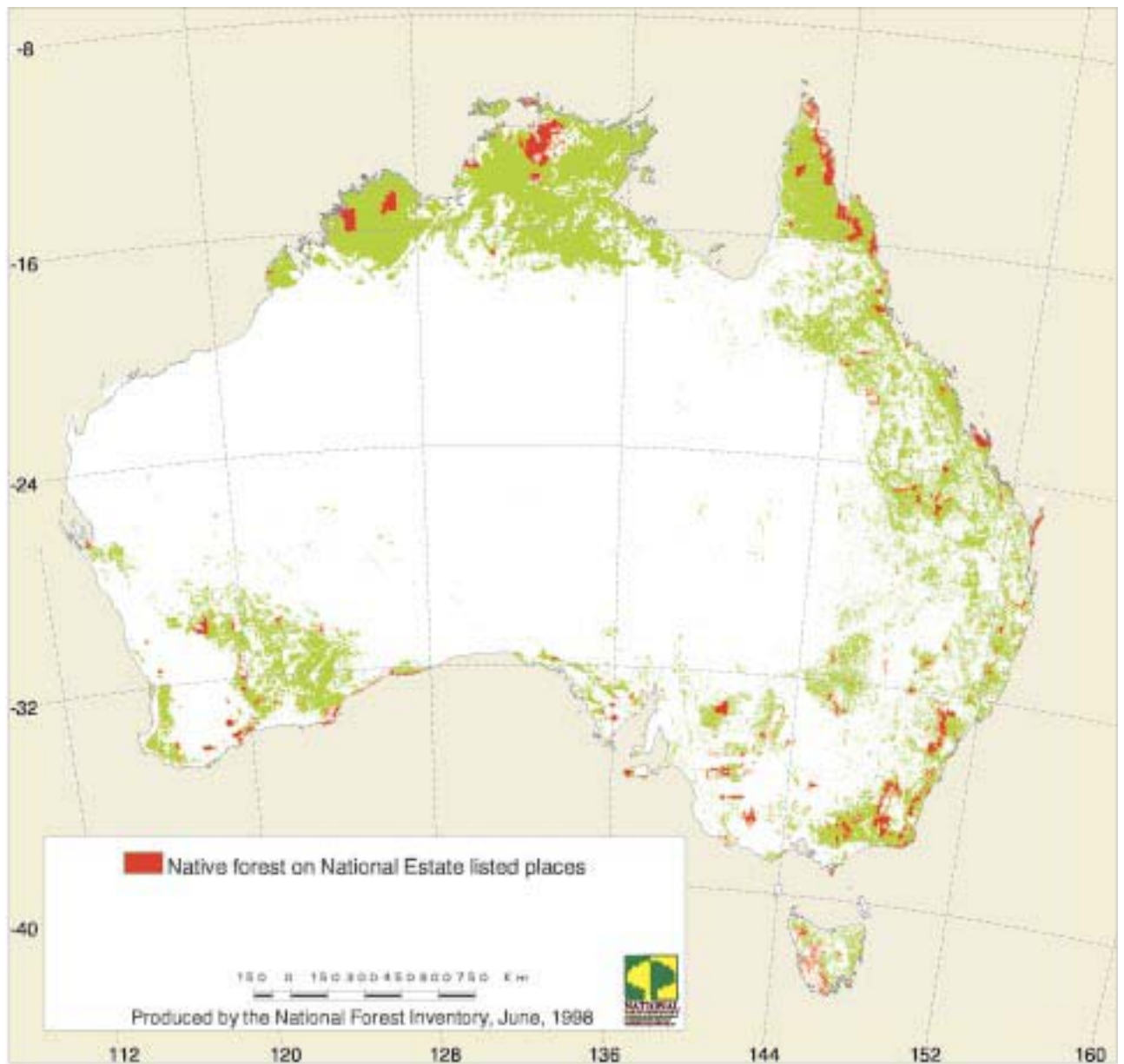


Map 4: Location of native forest on World Heritage listed places

Sources:

Forest: National Forest Inventory (1997);

World Heritage Area: Environment Australia (1995).

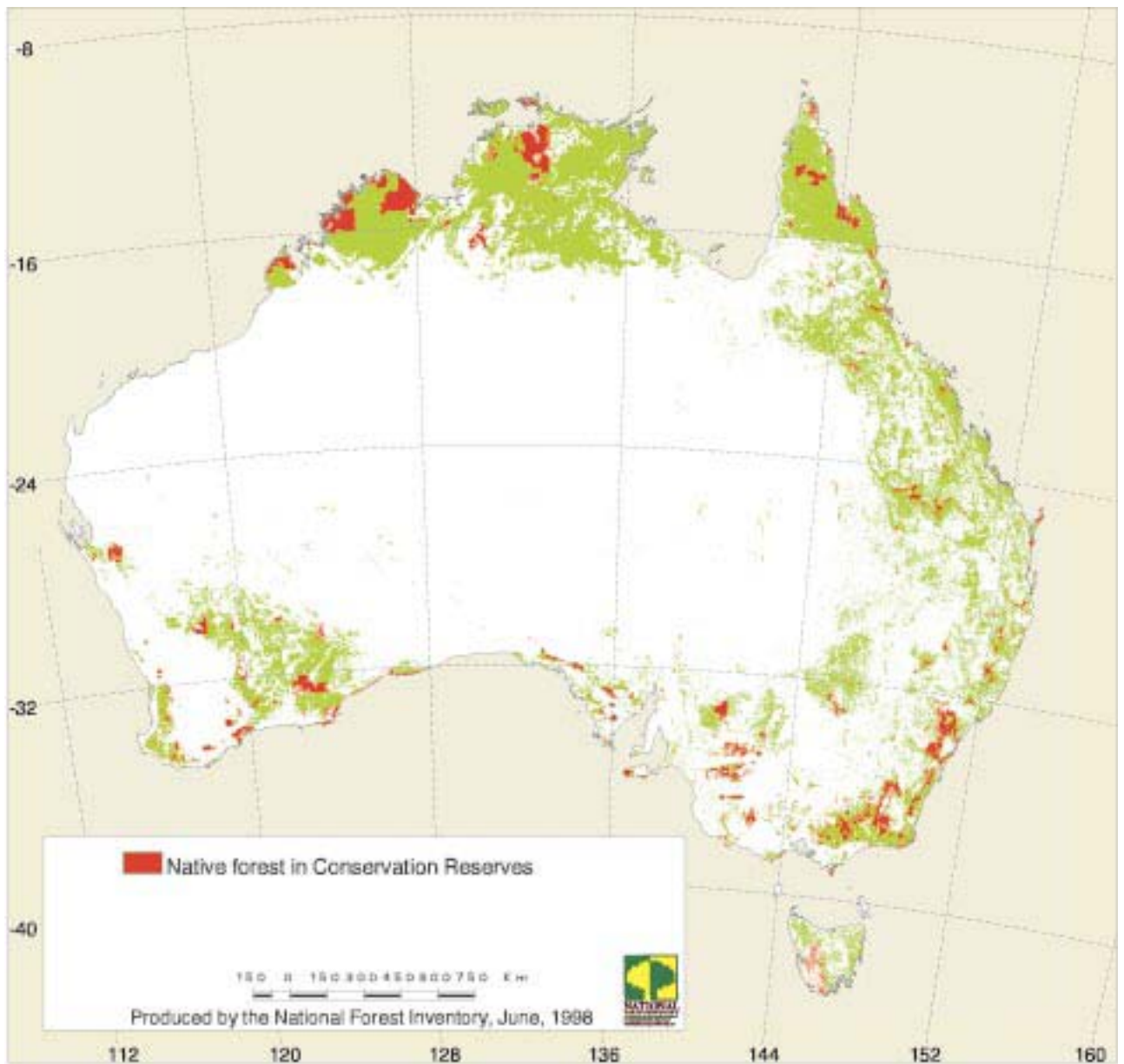


Map 5: Location of native forest on National Estate listed places

Sources:

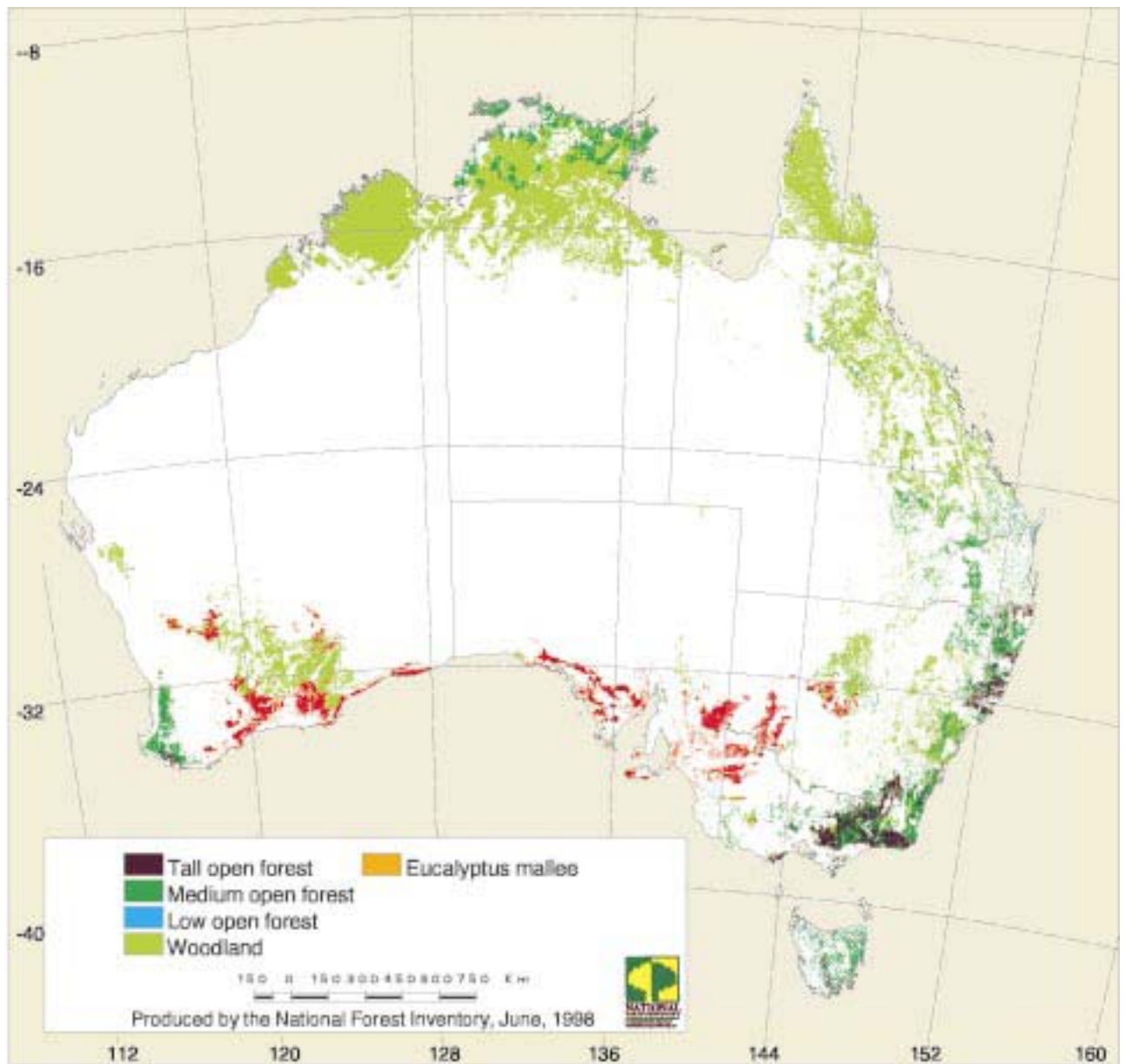
Forest: National Forest Inventory (1997);

National Estate: Environment Australia (1995).



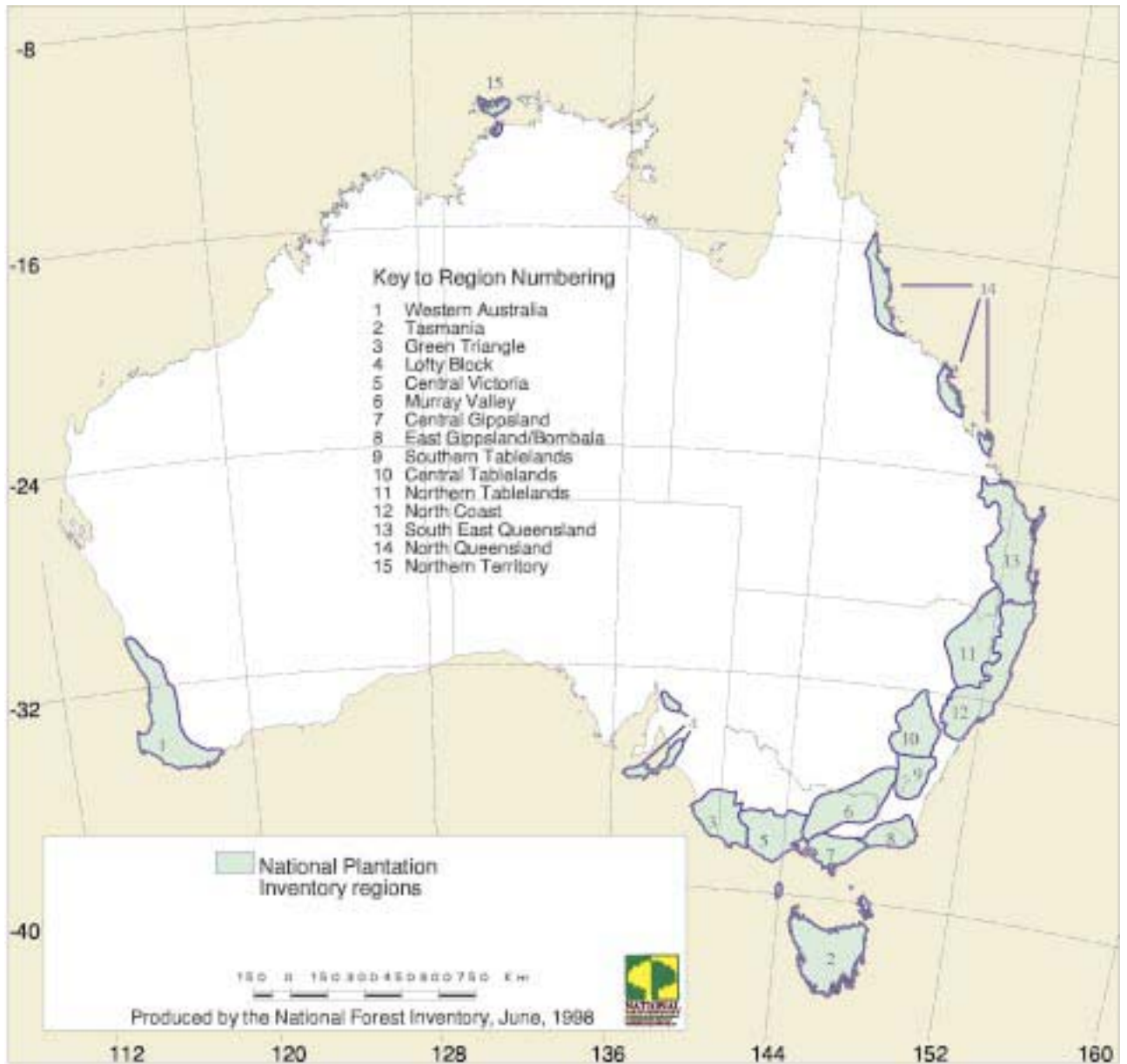
Map 6: Location of native forest in conservation reserves

Source: National Forest Inventory (1997).



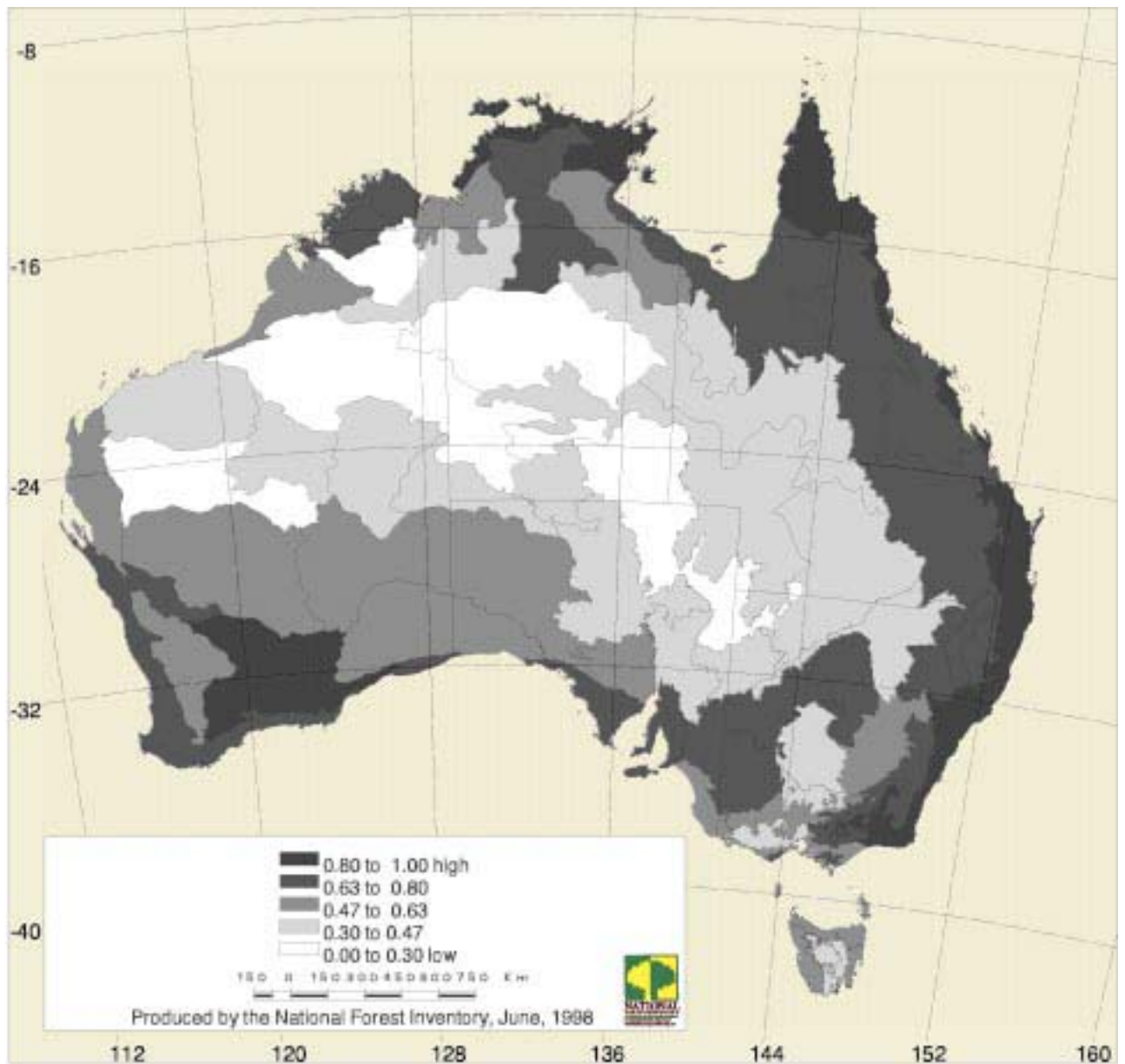
Map 7: Distribution of eucalypt forest, by structural classes

Source: National Forest Inventory (1997).

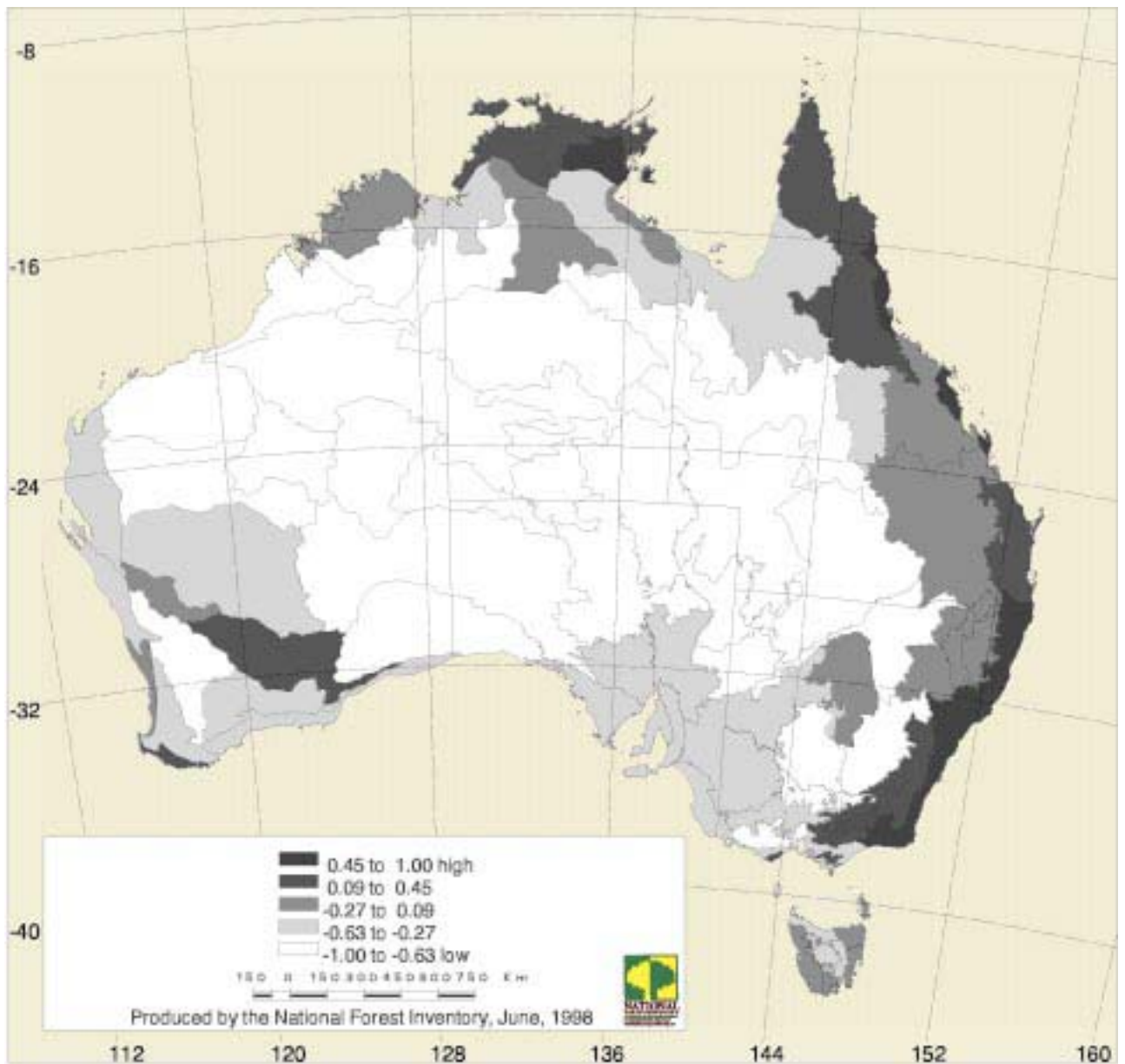


Map 8: National Plantation Inventory regions

Source: National Plantation Inventory (1997).

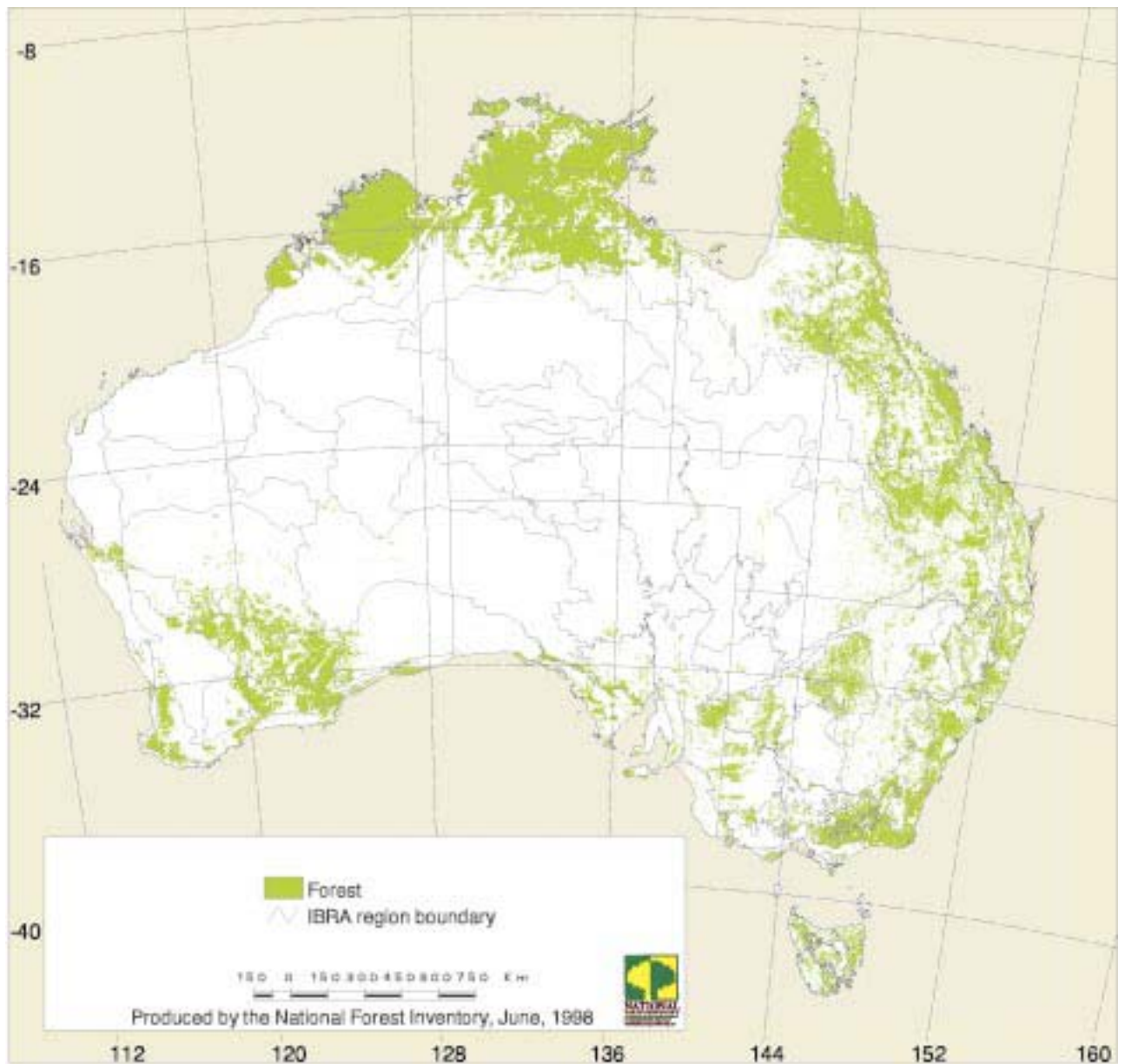


Source: Montreal First Approximation Report (1997).



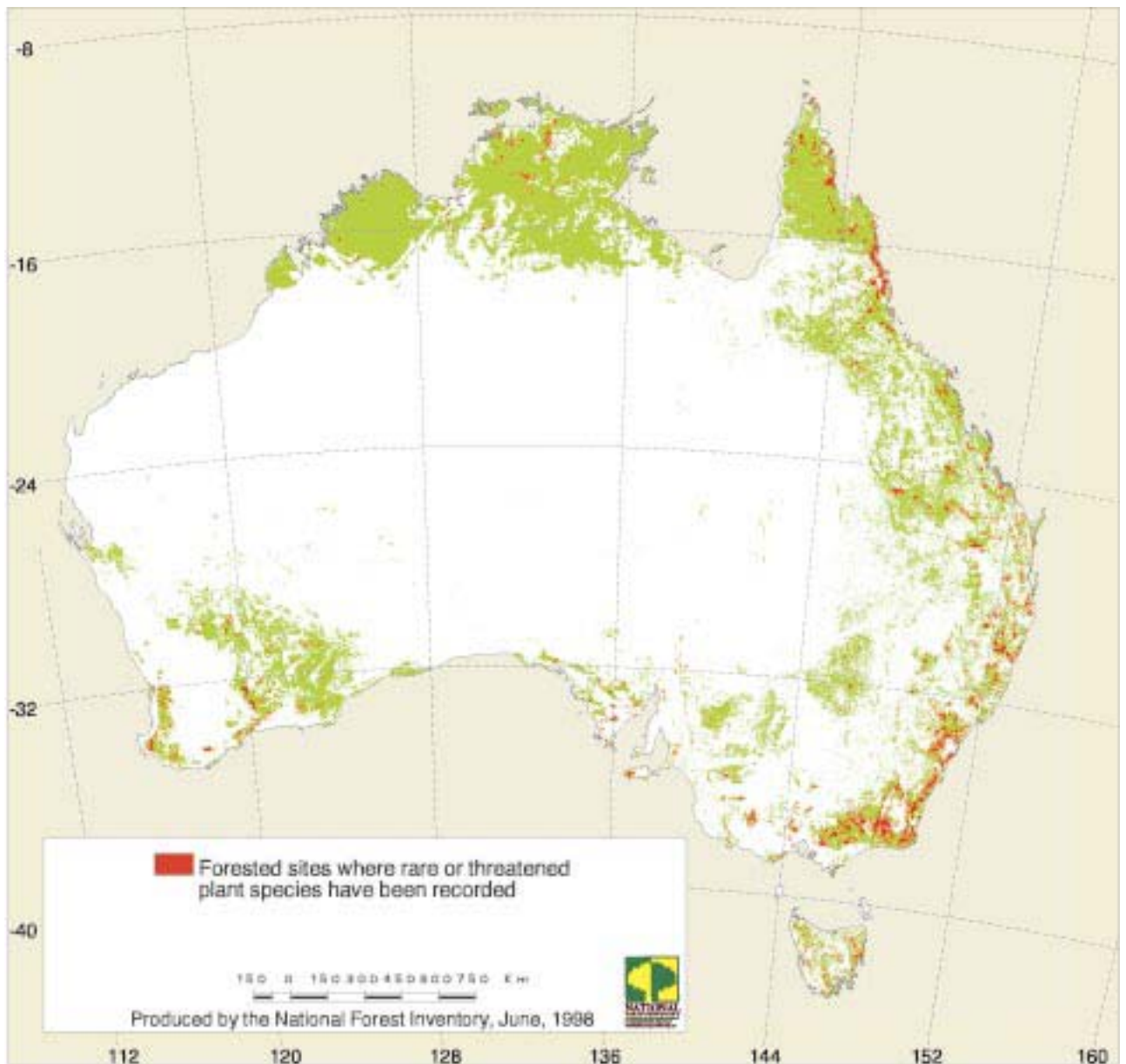
Map 10: Forest fragmentation as measured by Shannon contagion values for IBRA regions

Source: Montreal First Approximation Report (1997).



Map 11: Interim Biogeographic Regionalisation for Australia (IBRA regions)

Source: ANCA (1994).



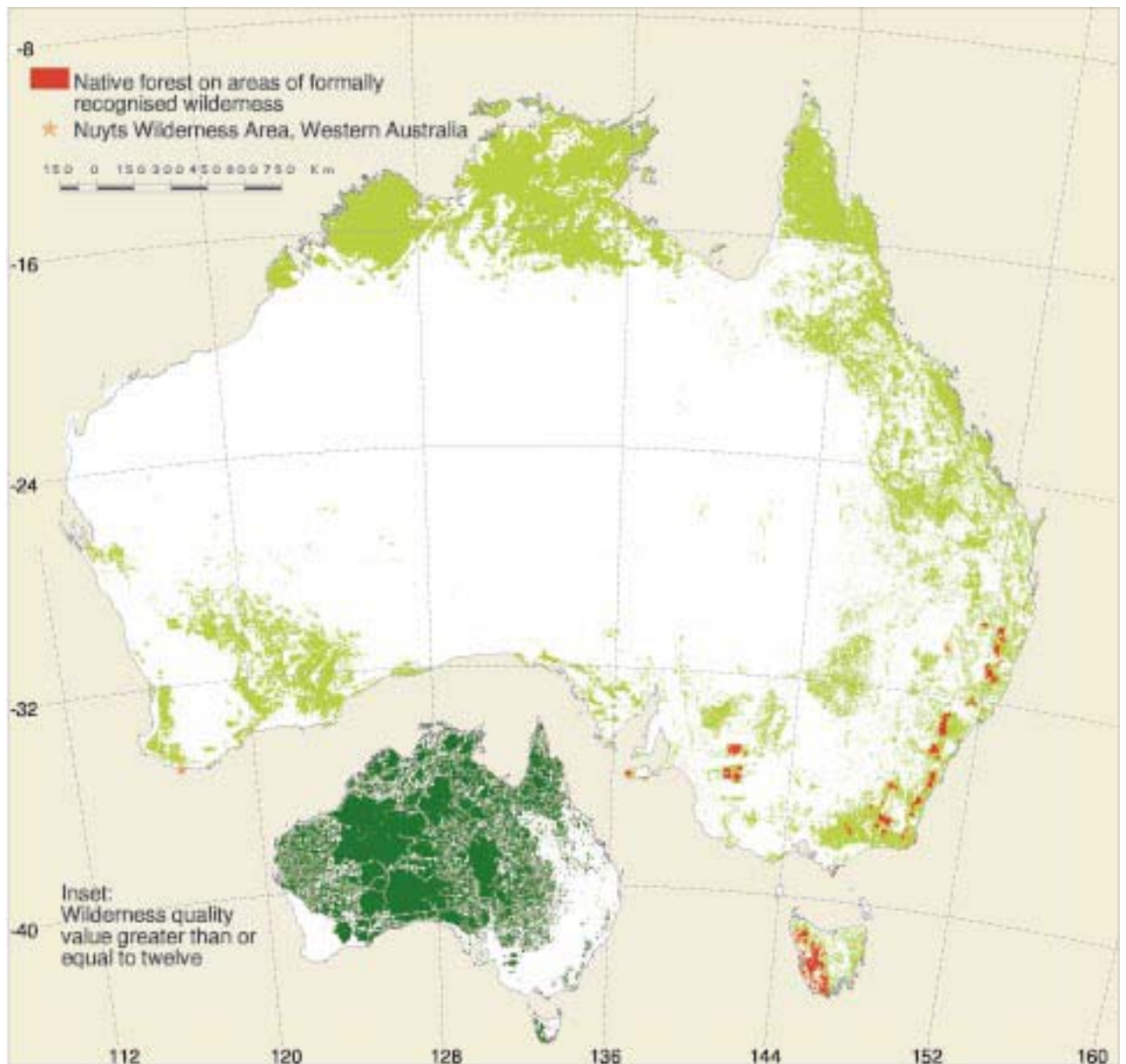
Map 12: The locations of forested sites where rare or threatened plant species have been recorded

Sources:

Forest: National Forest Inventory (1997);

ROTAP: Environment Australia (1995).

Note: This map shows point locations only. It cannot be used to determine spatial extent of species.



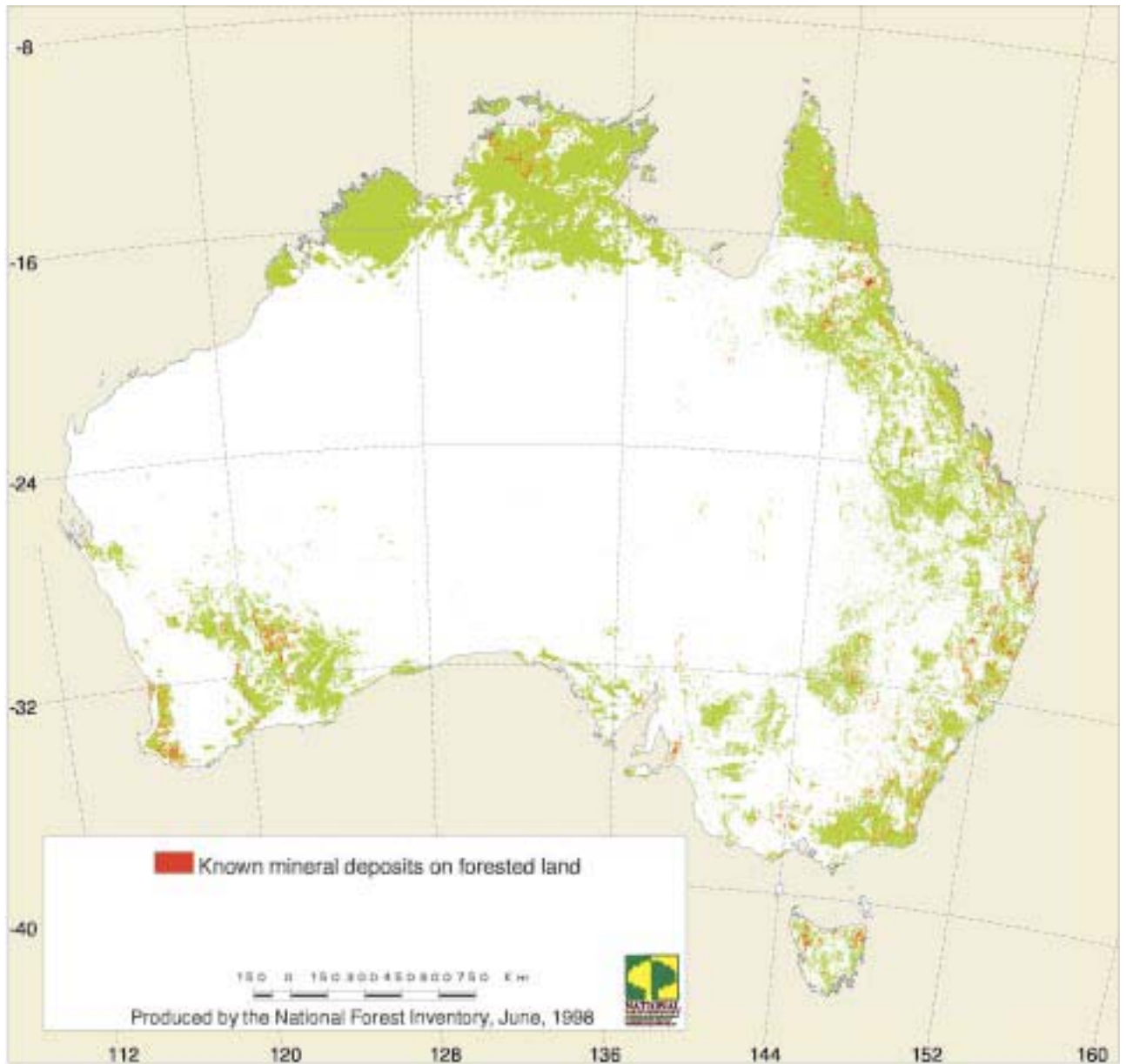
Map 13: Location of native forest on land where wilderness has been formally recognised. Inset shows areas with wilderness quality greater than or equal to twelve

Sources:

Formally recognised wilderness: State agencies;

Wilderness Quality: Environment Australia (1998).

Note: Resolution of native forest on formally recognised wilderness has been exaggerated for clarity.



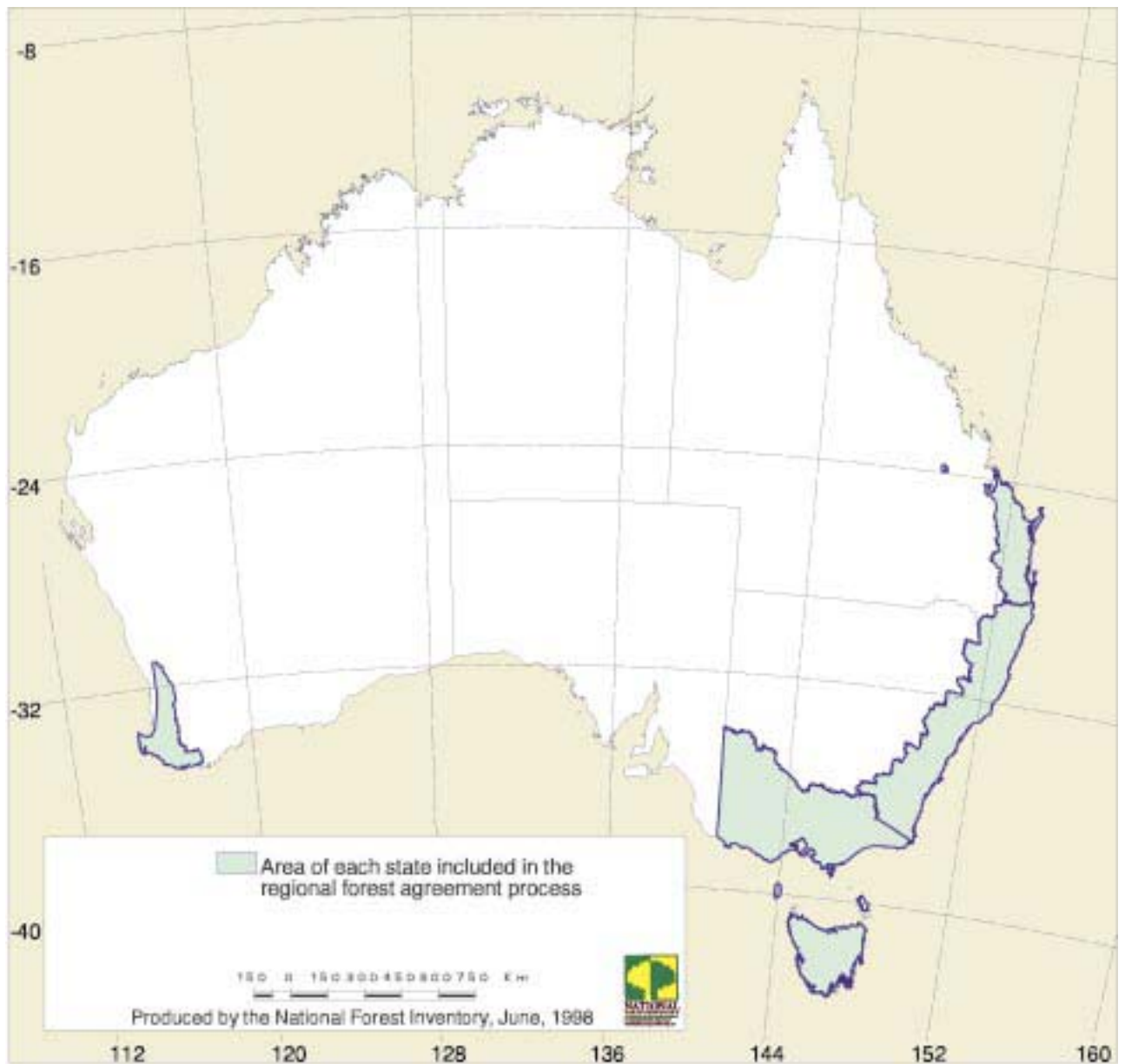
Map 14: Known locations of mineral deposits on forested land

Sources:

Forest: National Forest Inventory (1997);

Mineral locations: Bureau of Mineral Resources (1995)

Note: This map shows point locations only. It cannot be used to determine spatial distribution or economic value.



Map 15: Areas where regional forest agreements have or will be concluded

Source: National Forest Inventory (1997).

