



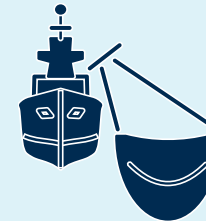
## The commonwealth Department of Agriculture, Fisheries and Forestry is changing the way we regulate and audit low-risk dairy, egg, and fish establishments

Our current system hasn't really evolved in over 20 years, and focuses more on compliance rather than risk, ongoing use of data, external assurance programs or recognising good performance. Moving forward we will be developing a regulatory and assurance framework that moves from a traditional 'site audit approach' to a risk-based 'verification and assurance model'.

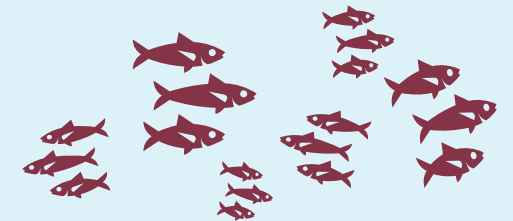
### The department defines low risk establishments as:



Storage facilities

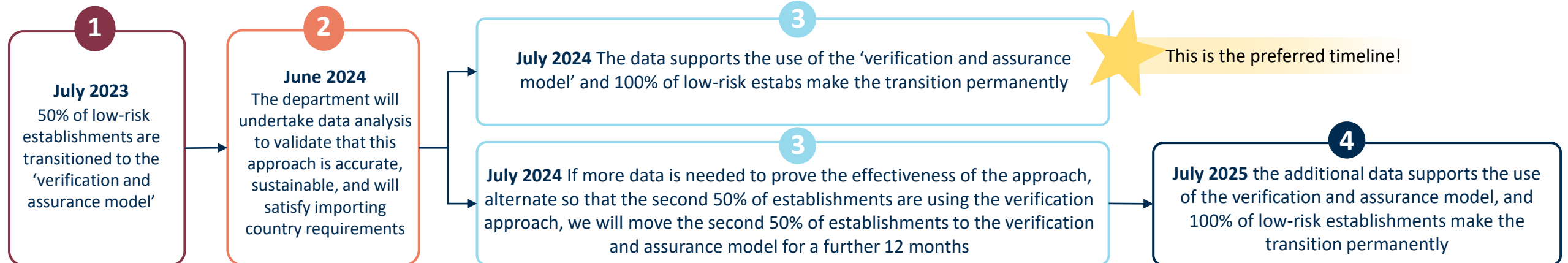


Fishing vessels



Some live fish establishments

### The trial of the 'verification approach'



### - WHAT DOES THIS MEAN FOR LOW RISK ESTABLISHMENTS? -

The 'verification and assurance model' will be less burdensome for low-risk establishments. This model will replace an audit with annual upload of information such as declarations, questionnaires, and sharing photos of your establishment; some establishments will also be asked to participate in verification activities to make sure that the new process is working as it should.

In July 2023 50% of low risk establishments will trial the new model, if the trial is successful this will eliminate the need for the traditional 'audit approach' entirely. This will either happen by July 2024 if the data supports it, or if more data is required, by July 2025. The department will be in contact with you to let you know whether or not your establishment is selected to take part in the trial.

There is more information to come! The department will run training sessions, facilitate meetings, and develop information videos. Stay tuned! If you have any questions in the meantime please reach out to [dairyexportreform@aff.gov.au](mailto:dairyexportreform@aff.gov.au) for dairy, [seafoodexportsupport@aff.gov.au](mailto:seafoodexportsupport@aff.gov.au) for seafood, or [dairyeggfish@aff.gov.au](mailto:dairyeggfish@aff.gov.au) for eggs.