

A key to adult beetles associated with stored grain:

1a) Head with snout; antennae with geniculate elbow ⇒ **Curculionidae**



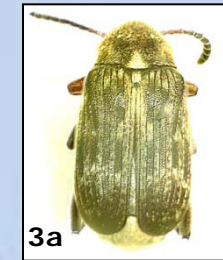
b) Head without snout; antennae not as above - ⇒ **2**

2a) Elytra short, exposing abdominal segments ⇒ **3**



b) Elytra long, covering abdominal segments ⇒ **4**

3a) Beetle covered with hairs; antennae long, no club ⇒ **5**



b) Beetle not very hairy; antennae with a round club ⇒ **6**

4a) Head hidden dorsally; body cylindrical/round ⇒ **7**



b) Head visible dorsally; body flattened ⇒ **8**



5a) Antennal segments – simple/saw tooth-like, no club ⇒ **Bruchinae**

b) Antennae with last 3 segm. forming club ⇒ **Anthribidae**

6a) Beetle shiny black/metallic; 1 segm. antennal club ⇒ **Histeridae**



b) Beetle black/brown; 3 segm. antennal club ⇒ **Nitidulidae**

7a) Antennae short, 3 segm. club; beetle elongate/cylindrical; pronotal teeth+ ⇒ **Bostrichidae**



b) Antennae long, no or loose 3 segm. club; beetle oval; pronotal teeth- ⇒ **Anobiidae**

8a) Beetle green-blue/metallic; lateral hairs ⇒ **Cleridae**

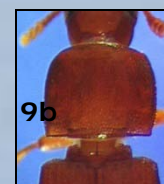


b) Not as above ⇒ **9**

9a) Lateral pronotal teeth+ ⇒ **10**



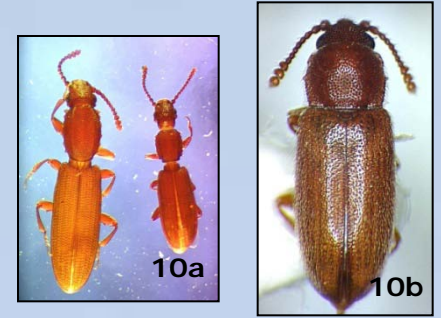
b) Lateral pronotal teeth- ⇒ **11**



A key to adult beetles associated with stored grain:

10a) Pronotum with 6 lateral teeth/ 2 or 4 pronotal corners teeth-like ⇒ **Silvanidae**

b) Pronotum with front corners tooth-like and also laterally mid-point ⇒ **Cryptophagidae**



11a) Antennae long, no club; pronotum with a pair of lateral ridges; beetle flattened ⇒ **Cryptolestes spp. Laemphloeidae**

b) Not as above ⇒

12



12a) Beetle >2mm; tarsi ≤ 3 segm; antennae 1-3 segm. ⇒ **Latridiidae**

b) Beetle 2-12mm; tarsi > 3 segm; if antennae clubbed – 3 segm. ⇒

13



13a) Beetle covered with hairs/scales ⇒

14

b) Beetle glabrous (not hairy) ⇒

16



14a) Head with median ocellus ⇒ **Dermestidae** (in part)

b) Median ocellus absent ⇒

15



15a) Beetle 5-10mm; brown/black coloured with underside B&W patterns of hairs ⇒ **Dermestes spp. Dermestidae** (in part)

b) Beetle 2-3mm; light brown coloured; elytral hairs obvious in parallel lines ⇒ **Mycetophagidae**



16a) Beetle 5-11mm & shiny black; waist + between prothorax & elytra ⇒ **Trogossitidae** (Cadelle)

b) Beetle 3-12mm & brown/black; waist - between prothorax & elytra; tarsi 5-5-4 ⇒ **Tenebrionidae**

