

A key to adult insects associated with stored grain:

1a) 3 prs legs; antennae +; wings +/- ⇒ **3**

b) 4 prs legs; antennae -; wings - ⇒ **2**



2a) no body regions distinct; eyes -/ ≥ 2pr+ ⇒ **Mites**

b) distinct body regions; eyes- / 1,2,3 or 4prs+ ⇒ **Other arthropods (eg spiders)**



3a) Sucking mouth parts ⇒ **4**

b) Chewing mouthparts ⇒ **6**



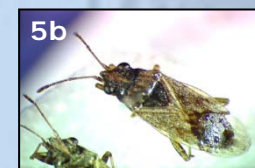
4a) 1 pr of wings (hind pr reduced = *halteres*) ⇒ **Flies**

b) 2 prs of wings ⇒ **5**



5a) Mouthparts coiled; wings scale-covered ⇒ **Moths**

b) Mouthparts needle-like; wings leathery ⇒ **Bugs**



6a) Forewings hard (= *elytra*) ⇒ **Beetles**

b) Wings, if present not as above ⇒ **7**



7a) Body with a 'waist'; with sting or ovipositor ⇒ **Ants, bees & wasps**

b) Body without a 'waist' ⇒ **8**



8a) Abdomen ends with obvious projections ⇒ **9**

b) Abdomen ends with obvious projections ⇒ **10**



9a) Abdomen ending with 3 long filaments; wings -; silver ⇒ **Silverfish**

b) Abdomen ending with a pair of cerci; wings -/+ (leathery); often brown or black coloured ⇒ **Cockroaches**

10a) Tarsi 4 segm.; body 1-3mm long; wings -/+ (forewing > hindwing) ⇒ **Psocids**

b) Tarsi 2 or 3 segm.; body ≥ 5mm; wings -/+ (forewings = hindwings) ⇒ **Termites**

